



500 Boston Post Road, Orange, CT 06477  
Phone: (203) 795-5457 · (800) 854-6951 Fax: (203) 795-5471  
order online [www.dennisuniform.com](http://www.dennisuniform.com)  
National Customer Service 800.854.6951

## WELCOME TO DENNIS

We look forward to working with you this year! Since 1920, DENNIS has sewn the best uniforms available in our Portland, Oregon factory. We are a family-owned business committed to quality, customer service, and education. Our goal is to have every student in uniform by the first day of school. If you need any help, please do not hesitate to contact our National Customer Service Department 800.854.6951.

## EASY WAYS TO SHOP

- ◆ Store, online, phone/fax/mail order.
- ◆ DENNIS accepts Visa, Mastercard, Discover & checks in US Dollars.
- ◆ Call National Customer Service for custom garments.

## ORDER ONLINE

- ◆ [www.dennisuniform.com](http://www.dennisuniform.com)
- ◆ Enter school code: **OR00RS**
- ◆ Or Scan QR code:



## NATIONAL CUSTOMER SERVICE

800.854.6951 fax 877.291.5480  
Hours: Monday-Friday 8am-5pm PST  
Extended summer hours

## RETURNS & EXCHANGES

DENNIS guarantees the quality of workmanship and fabrics on all garments.

Merchandise will be accepted for return or exchange within 90 days.

Merchandise must be accompanied by sales receipt, be unworn, unwashed, and unaltered, with tags intact.

There are no returns or exchanges on custom items.

Returns / exchanges / defective garments accepted at any branch store, or by mailing to:

DENNIS Uniform, 135 SE Hawthorne Blvd,  
Portland, Oregon 97214

National Customer Service 800.854.6951

UNIFORM PRICING EFFECTIVE 5/1/2015

## ORANGE STORE

203.795.5457 fax 203.795.5471

## REGULAR STORE HOURS

Tuesday-Thursday 10am – 5pm

Saturday 10am – 2pm

Labor Day 10am – 2pm

## EXTENDED SUMMER HOURS:

### August 3-24

Monday 10am – 5pm

Tuesday 10am – 7pm

Wednesday-Friday 10am – 5pm

Saturday 10am – 4pm

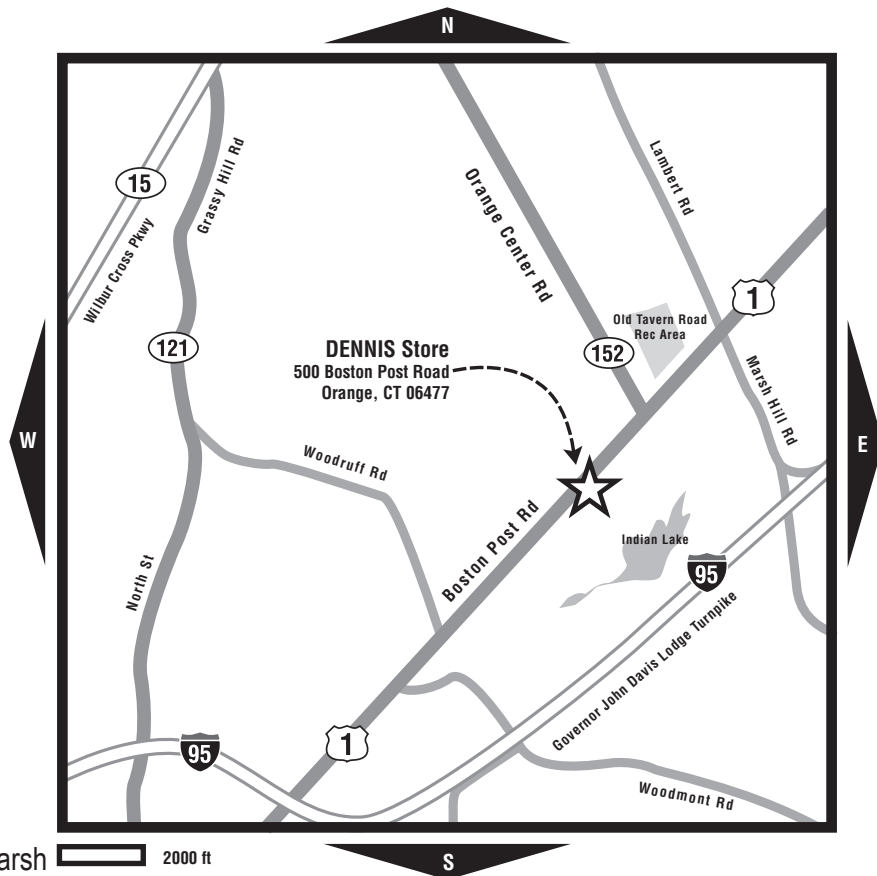
*DENNIS stores are closed on major holidays and from Christmas to New Year's Day.*

## DIRECTIONS

DENNIS is located on southeast side of the street and in the rear of the building.

**From I-95**, exit 41, turn right onto Marsh Hill Rd. Travel 1.4 miles. At traffic light turn left onto Boston Post Rd, Route 1. Travel southwest for .75 miles. DENNIS is on the left.

**From the Merritt Parkway**, exit 57 and stay in the right lane. Turn southeast onto Orange Center Rd, Route 152. Travel 3.3 miles to second light. Turn southwest onto Boston Post Rd, Route 1. Travel .25 mile to DENNIS.



## DENNIS PROMOTIONS

All year long, DENNIS offers sales and specials for customers. Watch for changing promotions in your store and online!

To receive email notifications of our latest promotions & special offers, call National Customer Service 800.854.6951 or sign up online at [www.dennisuniform.com](http://www.dennisuniform.com).

## DENNIScrip, Gift Scrip & AFP Vouchers

- DENNIScrip is redeemable for merchandise at all DENNIS stores, on-campus sales and for online, phone and mail order purchases.
- Please note: only DENNIScrip with a barcode can be redeemed online or by phone.
- Maximum change given is \$5.00 in stores and at on-campus sales. We cannot make change on mail order purchases.
- DENNIScrip is good forever!

# ST. RITA SCHOOL

School Code: OR00RS

1601 Whitney Avenue ; Hamden, CT 06517

## Girls, grades: K-5 SHIFTS



Girls 3-20	\$47.75
Girls 6½-16½	\$48.75

Item #: 007880-201

Blackwatch Plaid-Center box pleat (185)

## Girls, grades: 6-8 SKORTS



Girls 3-20	\$47.00
Girls 6½-16½	\$53.00
Juniors 1-19	\$53.00
Juniors 21-25	\$53.00

Item #: 035210-201

Blackwatch Plaid w/Tabs (185)

Must be knee length

## Girls, grades: K-5 BLOUSES



Youth 4-16	\$18.25
Adult S-2XL	\$19.25

Item #: 00080A-911

White BC S/S-Peter Pan Collar (119)

## Girls, grades: K-5 BLOUSES



Youth 4-16	\$20.50
Adult S-2XL	\$21.50

Item #: 00080C-911

White BC L/S-Peter Pan Collar (119)

## Girls, grades: K-5 TURTLENECK



Youth 2XS-XL	\$19.95
Adult S-2XL	\$21.00

Item #: 012470-941

Mock Turtleneck-White (119)

## Girls, grades: K-8 POLO



Youth 2XS-XL	\$22.00
Adult S-3XL	\$24.00

Item #: 08300A-ZRT

Dk Green Jersey S/S w/St. Rita emblem (136)

Warm weather uniform

## Girls, grades: 6-8 POLO



Youth 2XS-XL	\$27.75
Adult S-XL	\$30.75
Adult 2XL-3XL	\$34.75

Item #: 45080A-ZRT

Overshirt-White Jersey Knit S/S w/St. Rita emblem (119)

## Girls, grades: 6-8 POLO



Youth 2XS-XL	\$30.25
Adult S-XL	\$33.25
Adult 2XL-3XL	\$37.25

Item #: 45080C-ZRT

Overshirt-White Jersey Knit L/S w/St. Rita emblem (119)

### Girls, grades: K-8 PANTS



Girls 3-6X	\$29.00
Girls 7-20	\$31.00
Girls 6½-18½	\$33.00
Juniors 1-19	\$37.00
Juniors 21-25	\$37.00

Item #: 040330-998

Khaki Flat Front Stretch (049)

Winter weather uniform

### Girls, grades: K-8 WALK SHORTS



Girls 3-6X	\$22.00
Girls 7-20	\$24.50
Girls 6½-18½	\$25.50
Juniors 1-19	\$28.50
Juniors 21-25	\$28.50

Item #: 040320-998

Khaki Knee Length FF Stretch (049)

Warm weather uniform May-Oct

### Girls, grades: K-8 CARDIGAN



Youth 2XS-XL	\$33.20
Adult S-XL	\$37.75
Adult 2XL-3XL	\$43.25

Item #: 060000-ZRT

Green Crew Neck w/St. Rita emblem (039)

### Girls, grades: PK-8 SWEATSHIRT 9oz



Youth 3XS-XL	\$22.50
Adult S-3XL	\$25.50

Item #: 090000-Z6R

Navy Crew Neck w/St. Rita screen (067)

### Girls, grades: K-8 SWEATSHIRT 9oz



Youth 3XS-XL	\$29.20
Adult S-3XL	\$32.20

Item #: 092880-Z6R

Navy Hooded w/St. Rita screen (067)

### Girls, grades: PK-8 SWEATPANT 9oz



Youth 3XS-XL	\$22.50
Adult S-3XL	\$25.50

Item #: 090410-Z6R

Navy w/St. Rita screen (067)

### Girls, grades: K-8 SWEATPANT 9oz



Youth 3XS-XL	\$22.50
Adult S-2XL	\$25.50

Item #: 090750-Z6R

Female Open Bottom Sweatpants - Navy w/St. Rita screen (067)

### Girls, grades: PK-8 GYM WEAR



Youth 3XS-XL	\$17.20
Adult S-3XL	\$19.50

Item #: 005800-Z6R

Shorts Nylon Mini Mesh-Navy w/St. Rita screen (067)

### Girls, grades: PK-8 GYM WEAR



Youth XS-XL	\$11.50
Adult S-3XL	\$12.50

Item #: 053800-Z6R

T-Shirt 100C-Ash w/St. Rita screen (002)

### Girls, grades: 6-8 GYM WEAR



Youth S-XL	\$29.00
Adult S-2XL	\$33.25

Item #: 032450-Z6R

Warm Up Pant Soffee Poly Brushed Tricot - Navy w/St. Rita sc (067)

### Girls, grades: 6-8 GYM WEAR



Youth S-XL \$29.00  
Adult S-2XL \$35.00

Item #: 032650-Z6R

Warm up Jacket Soffee Poly Brushed Tricot- Navy w/St. Rita (067)

### Girls, grades: K-8 FLEECE VEST



Youth 2XS-XL \$31.20  
Adult S-3XL \$40.20

Item #: 054100-ZRT

Forest Green Microfleece Vest-front zipper w/St. Rita emblem (035)

### Girls, grades: K-8 FLEECE JACKET



Youth 2XS-XL \$40.20  
Adult S-3XL \$50.20

Item #: 054000-ZRT

Forest Green Microfleece Jacket-front zipper w/St. Rita emblem (035)

### Girls, grades: K-8 ACCESSORIES



One size \$5.95

Item #: 004680-201

Elastic Back Headband-Blackwatch Plaid (185)

### Girls, grades: K-8 ACCESSORIES



One size \$5.95

Item #: 004880-201

Padded Headband-Blackwatch Plaid (185)

### Girls, grades: K-8 ACCESSORIES



One size \$5.95

Item #: 005090-201

Scrunchy-Blackwatch Plaid (185)

### Girls, grades: K-8 ACCESSORIES



One size \$6.95

Item #: 005290-201

Streamer Bow-Blackwatch Plaid (185)

### Girls, grades: K-8 ACCESSORIES



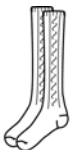
Sizes S-M-L-XL \$4.95

Item #: 047200-900

Bobby Socks/Triple Roll-White (119)

Warm weather uniform

### Girls, grades: K-8 ACCESSORIES



Sizes S-M-L-XL \$5.95

Item #: 047300-900

Knee-Hi Cable Knit-Green (039)

Knee-Hi Cable Knit-Navy (067)

### Girls, grades: K-8 ACCESSORIES



Sizes S-M-L-XL \$5.95

Item #: 047400-900

Knee-Hi Opaque-Green (039)

Knee-Hi Opaque-Navy (067)

### Girls, grades: K-8 ACCESSORIES



Sizes XS-XL

\$10.95

Item #: 047800-900

Tights Heavy Weight Ribbed-Navy (067)

### Girls, grades: K-8 ACCESSORIES



Sizes XS-XL

\$7.95

Item #: 047900-900

Tights Heavy Weight Opaque-Hunter Green (036)

Tights Heavy Weight Opaque-Navy (067)

### Girls, grades: K-8 ACCESSORIES



One size

\$30.00

Item #: 0FT109-201

Shift/Blouse/Bow Doll outfit- Blackwatch Plaid (185)

### Boys, grades: K-8 POLO



Youth 2XS-XL

\$22.00

Adult S-3XL

\$24.00

Item #: 08300A-ZRT

Dk Green Jersey S/S w/St. Rita emblem (136)

### Boys, grades: K-8 POLO



Youth 2XS-XL

\$24.20

Adult S-3XL

\$26.20

Item #: 08300C-ZRT

Dk Green Jersey L/S w/St. Rita emblem (136)

### Boys, grades: K-8 PANTS



Reg 3-7 or Slim 4-7

\$24.00

Reg 8-16 or Slim 8-16

\$27.25

Husky 26-38

\$32.50

Prep 27-32

\$31.50

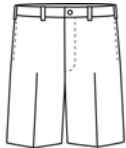
Mens 33-48

\$33.50

Item #: 077000-962

Boys-Irvington Flat Front - Khaki Twill (049)

### Boys, grades: K-8 WALK SHORTS



Reg 3-7 or Slim 4-7

\$21.00

Reg 8-16 or Slim 8-16

\$24.50

Husky 26-38

\$29.00

Prep 27-32

\$29.00

Mens 33-48

\$30.00

Item #: 040720-962

Boys-Irvington Flat Front-Khaki Twill (049)

(May 1- Sept 30)

### Boys, grades: K-8 PULLOVER



Youth 2XS-XL

\$33.75

Adult S-XL

\$38.20

Adult 2XL-3XL

\$43.00

Item #: 065000-ZRT

Green V-Neck w/St. Rita emblem (039)

### Boys, grades: PK-8 SWEATSHIRT 9oz



Youth 3XS-XL

\$22.50

Adult S-3XL

\$25.50

Item #: 090000-Z6R

Navy Crew Neck w/St. Rita screen (067)

### Boys, grades: K-8 SWEATSHIRT 9oz



Youth 3XS-XL

\$29.20

Adult S-3XL

\$32.20

Item #: 092880-Z6R

Navy Hooded w/St. Rita screen (067)

### Boys, grades: PK-8 SWEATPANT 9oz



Youth 3XS-XL	\$22.50
Adult S-3XL	\$25.50

Item #: 090410-Z6R

Navy w/St. Rita screen (067)

### Boys, grades: PK-8 GYM WEAR



Youth 3XS-XL	\$17.20
Adult S-3XL	\$19.50

Item #: 005800-Z6R

Shorts Nylon Mini Mesh-Navy w/St. Rita screen (067)

### Boys, grades: PK-8 GYM WEAR



Youth XS-XL	\$11.50
Adult S-3XL	\$12.50

Item #: 053800-Z6R

T-Shirt 100C-Ash w/St. Rita screen (002)

### Boys, grades: 6-8 GYM WEAR



Youth S-XL	\$29.00
Adult S-2XL	\$33.25

Item #: 032450-Z6R

Warm Up Pant Soffee Poly Brushed Tricot - Navy w/St. Rita sc (067)

### Boys, grades: 6-8 GYM WEAR



Youth S-XL	\$29.00
Adult S-2XL	\$35.00

Item #: 032650-Z6R

Warm up Jacket Soffee Poly Brushed Tricot- Navy w/St. Rita (067)

### Boys, grades: K-8 FLEECE VEST



Youth 2XS-XL	\$31.20
Adult S-3XL	\$40.20

Item #: 054100-ZRT

Forest Green Microfleece Vest-front zipper w/St. Rita emblem (035)

### Boys, grades: K-8 FLEECE JACKET



Youth 2XS-XL	\$40.20
Adult S-3XL	\$50.20

Item #: 054000-ZRT

Forest Green Microfleece Jacket-front zipper w/St. Rita emblem (035)

### Boys, grades: K-8 ACCESSORIES



Sizes 20-30	\$18.95
Sizes 32-48	\$19.95

Item #: 041500-900

Belt Braided Leather-Brown (013)  
**Required**

### Boys, grades: K-8 ACCESSORIES



Sizes S-M-L-XL	\$4.95
----------------	--------

Item #: 047100-900

Crew Socks Cotton-Khaki (049)

Crew Socks Cotton-White (119)





# STUDENTS' BODY MEASUREMENTS

## HOW TO MEASURE

chest/bust: fullest part  
 waist: traditional waist, the narrowest part; all style sizes are scaled to this measurement  
 hips: stand heels together; fullest part  
 rise: bottom of waistband at the back around crotch to bottom of waistband front  
 waist length: from nape of neck to waist  
 inseam: from crotch to top of shoe  
 skirt length: from bottom of waistband

## SPECIAL SIZES

require these measurements:  
 jumpers: bust/ waist/ hip/ skirt length/ waist length  
 skirts/skort: waist/ hip/ skirt length  
 pants: waist/ hip/ inseam  
 walk shorts: waist/ hip/ walk short length

## BOYS' PANTS & WALK SHORTS\*

boys' size	waist	short length	pant inseam
3	21.5	12	14.5
4 slim	20	—	16
4	22	12.5	16
5 slim	20.5	—	17.5
5	22.5	13	17.5
6 slim	21	—	19.5
6	23	13.5	19.5
7 slim	21.5	—	20
7	23.5	14	20
8 slim	22	—	21.5
8	24	15	21.5
9 slim	22.5	—	23
9	24.5	—	23**
10 slim	23	—	24
10	25	16.5	24
11 slim	23.5	—	25**
11	25.5	—	25
12 slim	24	—	26.5
12	26	17.25	26.5
14 slim	25	—	28
14	27	17.75	28
16 slim	26	—	29.5
16	28	17.75	29.5

\*Sizes 4-10 have elastic in back waistband.

\*\*Sizes 9 & 11 not available in walk shorts.

## HUSKY/PREP/MEN'S PANTS & WALK SHORTS

waist size	husky shorts length	prep shorts length	husky pants inseam	prep pants inseam	men's pants inseam
26*	14.25	19**	21.5	—	—
27*	15.75	19	22.5	32	—
28*	16.25	19.25	24	32	—
29*	16.75	19.5	25.5	32	—
30*	17.25	19.75	27	32	—
31	17.75	20	27.5	32	—
32	18.25	20.25	28.5	32	—
33***	18.75	20.5	29.5	—	36
34	19.25	20.75	29.5	—	36
36	19.75	21.25	30.5	—	36
38	—	21.75	31.5	—	36
40	—	22.25	—	—	36
42	—	22.5	—	—	36
44	—	22.75	—	—	36

\*Husky sizes 26-30 have elastic in waistband.

\*\*Twill walk shorts only.

\*\*\*Men's waist size 33" and up are 36" unhemmed.

## T-SHIRTS, JACKETS & SWEATSHIRTS

youth size	t-shirts garment size	jackets/sweatshirts garment size
XS	4-5	2-4
S	6-8	6-8
M	10-12	10-12
L	14-16	14-16
XL	18-20	18-20
adult size garment size		
S	34-36	
M	38-40	
L	42-44	
XL	46-48	

## GYM SHORTS & SWEATPANTS

youth size	gym shorts waist	sweatpants waist
S	21-22	22-24
M	23-24	24-26
L	25-26	26-28
adult size gym shorts waist sweatpants waist		
XS	24-26	N/A
S	28-30	30-32
M	32-34	34-36
L	36-38	38-40
XL	40-42	42-44

## PULL-ON PANTS & SHORTS

youth size	waist	pants inseam
2XS	21-22	16
XS	22-23	19
S	23-24	22
M	25-26	25
L	27-28	27
XL	29-30	28
adult size waist pants inseam		
XS	25-27	31.5
S	28-30	32
M	31-33	32.5
L	34-36	33
XL	37-39	33.5
2XL	40-42	34

## SHIRTS

youth size	chest	
4	22	
6	24	
8	26	
10	28	
12	30	
14	32	
16	34	
18	36	
20	38	
adult size neck sleeve length*		
S	14.5	32
M	15.5	33
L	16.5	34
XL	17.5	35
2XL	18.5	36

\*Long sleeve oxford only.

## KNIT SHIRTS

youth size	chest
2XS	23
XS	25
S	27
M	29
L	32
XL	35
adult size chest	
S	35
M	38
L	42
XL	46
2XL	50
3XL	54

## SWEATERS

youth size	chest
2XS	23
XS	25
S	27
M	29
L	32
XL	35
adult size chest	
S	35
M	38
L	42
XL	46

## GIRLS' JUMPERS, SKIRTS & SKORTS, PANTS & WALK SHORTS

### students' body measurements length by style

size	chest	waist	hip	skirt length	3521 skort length*	walk shorts length	4040 pants inseam	4030 flat-front pants inseam
G3	23	21	24	11	10.25	10.25	15.25	19.25
G4	24	22	25	12	10.75	11	16.75	20.25
G5	24.5	22.5	26	13	11.5	11.75	18.5	21.25
G6	25	23	26.5	14	12	12.5	20.25	22.25
G6x		23.5	27		12.75	13.25	22	23.25
G7	26	23.5	27.5	15	14.75	14	24	24
G8	27	24	28.5	16	15.25	14.75	25.5	25.5
G10	29	25	30.5	17	15.75	15.5	26.5	27.75
G12	30.5	26	33	18	16.5	16.5	27	28.25
G14	32	27	35	19	17	17.5	27.75	29
G16	34	28	37	20	17.75	18.25	28	29.25
G18	36	29	39	20	18.5	19	28	29.25
G20	38	30	41	20	18.75	19.25	28	29.25

### Half (plus) sizes

H6.5	27	25	28.5	14	12.75	12.5	20.25	—
H8.5	29	26	30.5	16	15.25	14.75	25.5	—
H10.5	31	27	32.5	17	15.75	15.5	26.5	—
H12.5	32.5	28	35	18	16.5	16.5	27	—
H14.5	34	29	37	19	17	17.5	27.75	—
H16.5	36	30	39	20	17.75	18.25	28	—

\*3550 longer skort measures 3" longer.

**Girls' Pleat-front Pants (#4040)** are available in slim sizes. Slim sizes run 2" smaller in waist and hips than regular sizes and are available in sizes S4, S5, S6, S7, S8, S10, S12, S14, S16.

## JUNIORS' SKIRTS, SKORTS, PANTS & WALK SHORTS

### students' body measurements length by style

juniors' size	waist	hip	skirt length	3521 skort length*	walk shorts length	4040 pants inseam	4030 flat-front pants inseam
J1	25	35.5	19	17.5	16.25	30.75	32.25
J3	26	36.5	19	17.75	16.5	30.75	32.25
J5	27	37.5	19	18	16.75	31	32.5
J7	28	38.5	20	18.25	17	31.25	32.5
J9	29	39.5	20	18.5	17.25	31.25	32.75
J11	30	40.5	20	18.75	17.5	31.25	32.75
J13	31.5	42	20	19	17.75	31.25	32.75
J15	33	43.5	21	19.25	18	31.5	33
J17	34.5	45	21	19.5	18.25	31.5	33
J19	36	46.5	21	19.75	18.5	31.75	33.25

\*3550 longer skort measures 3" longer.

## GIRLS' BLOUSES\*

size	blouse chest	butterfly/camp shirt chest only
G3	22	23
G4	23	24
G5	—	24.5
G6	24	25
G6x	—	25.5
G7	—	26
G8	25	27
G10	27	29
G12	29	30.5
G14	31	32
G16	33	34

\*Order same size as jumper or skirt.

## JUNIORS' & WOMEN'S BLOUSES

juniors' size	camp shirt chest	women's size	blouse chest
J1	34	S	30-32
J3	35	M	34-36
J5	36	L	38-40
J7	37	XL	42-44
J9	38	2XL	46-48
J11	39	3XL	50-52
J13	40.5		
J15	42		
J17	43.5		
J19	45		

## GIRLS' POLO SHIRT\*

size	chest	length of garment
2XS	22	16
XS	24	17
S	26	18
M	27	19.5
L	29	21
XL	31	22

\*Garment is styled to have a trim fit.

## JUNIORS' POLO SHIRT\*

size	chest	length of garment
XS	35	23.5
S	37	24.5
M	39	25
L	41	26
XL	44	26.5
2XL	47	27

\*Garment is styled to have a trim fit.

## SOCKS

sock size	shoe size	approx. age
XS (6-7.5)	youth 7.5-11.5	3-5 years
S (7-8.5)	youth 9-adult 2.5	4-7 years
M (8-9.5)	youth 12-adult 5.5	6-9 years
L (9-11)	adult 4-10	10 & up
XL (10-12)	adult 6-11	tall girl
XL (10-13)	adult 6-12	men's

## TIGHTS

tights size (approx. age)	height	weight
XS (2-4)	33-38"	28-38#
S (4-6)	39-45"	38-50#
M (6-8)	45-51"	50-62#
L (8-10)	51-56"	62-74#
XL (10-14)	56-64"	74-110#
petite	5'1"-5'5"	95-130#
average	5'3"-5'7"	125-160#
tall	5'7"-6'0"	155-180#