

MOBILE ELEMENTARY SCHOOL WELL EQUIPPING PROJECT

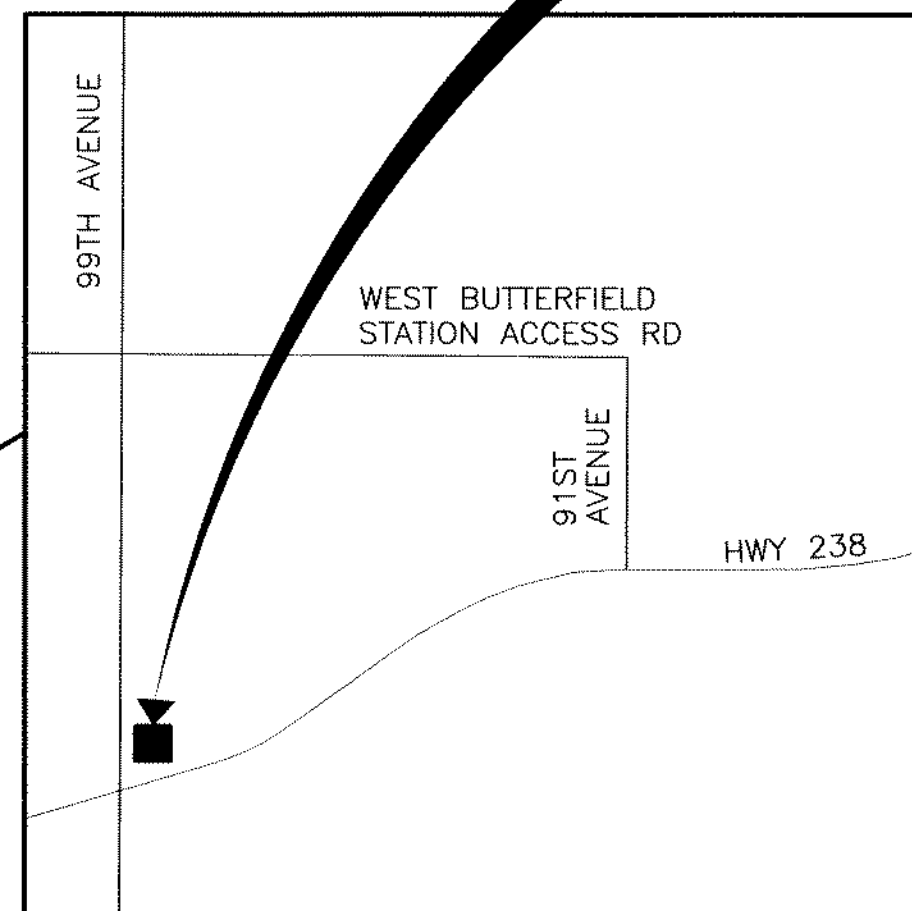
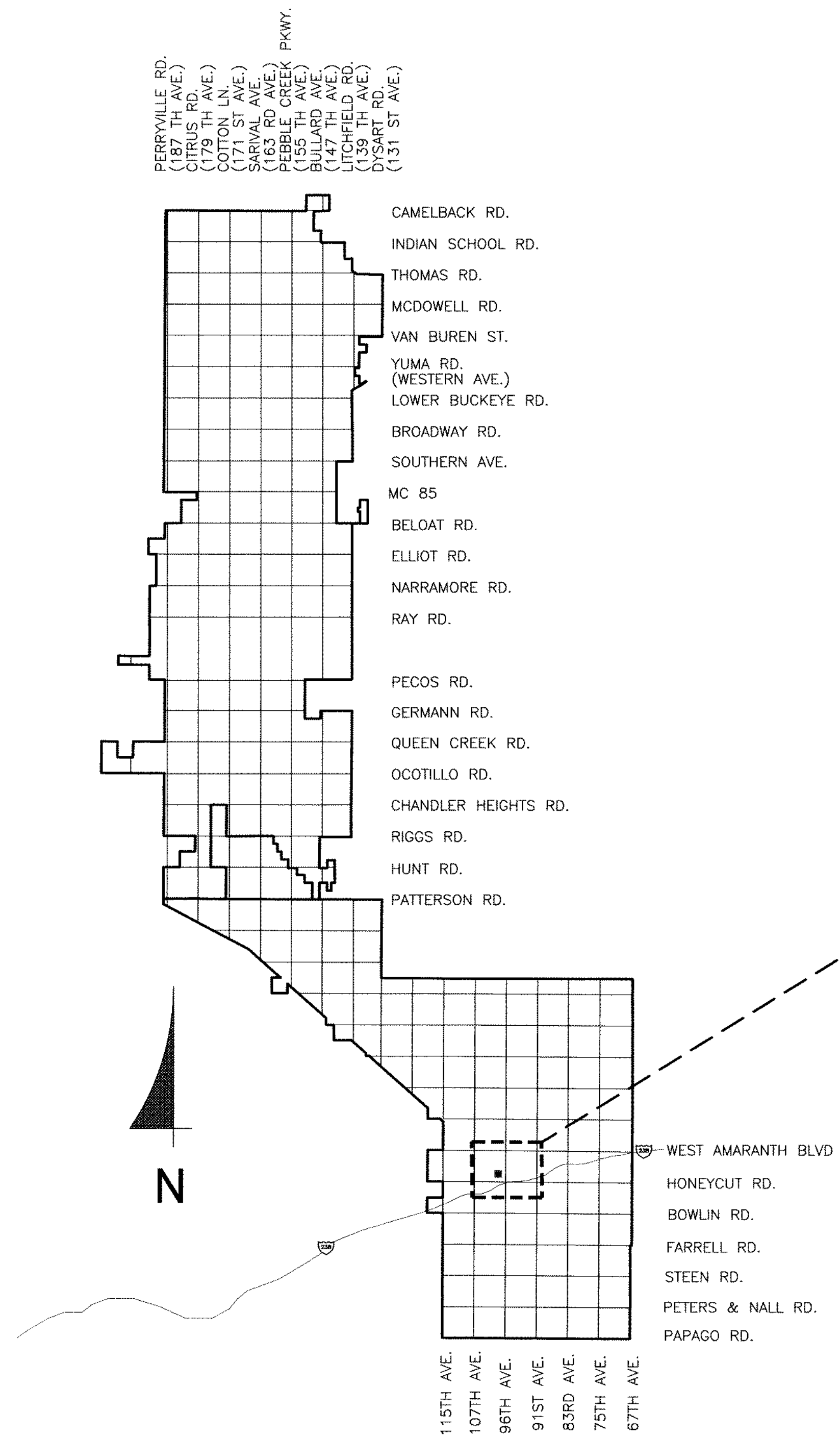
42798 SOUTH 99TH AVENUE
GOODYEAR, ARIZONA 85239

WILSON ENGINEERS
9633 South 48th Street, Suite 290
Phoenix, Arizona 85044-5658
Phone: (480) 893-8860
Improving Arizona's Infrastructure Since 1942

CITY OF GOODYEAR
MOBILE ELEMENTARY SCHOOL
WELL EQUIPPING PROJECT
COVER SHEET
WILSON PROJECT NO. 15009



MOBILE ELEMENTARY
42798 S 99TH AVENUE

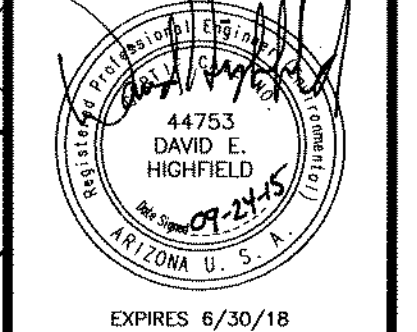


IN ACCORDANCE WITH AAC R18-4-213, ALL MATERIALS ADDED AFTER JANUARY 1, 1993, WHICH MAY COME INTO CONTACT WITH DRINKING WATER SHALL CONFORM TO NATIONAL SANITATION FOUNDATION STANDARDS 60 AND 61.

AS-BUILT CERTIFICATION	
I HEREBY CERTIFY THAT THE "AS-BUILT" INFORMATION SHOWN HEREON WAS OBTAINED UNDER MY DIRECT SUPERVISION AND IS CORRECT AND COMPLETE TO THE BEST OF MY KNOWLEDGE AND BELIEF.	
DATA CERTIFICATION	
I HEREBY CERTIFY THAT THIS DESIGN IS BASED ON ACCURATE FIELD DATA WHICH HAS BEEN CHECKED IN THE FIELD PRIOR TO SUBMISSION OF THESE PLANS TO THE CITY FOR APPROVAL.	
CITY OF GOODYEAR	
REVIEW AND RECOMMENDED APPROVAL BY:	
FIRE DEPT.	GRADING & DRAINAGE
LANDSCAPING & PLANNING	WATER & SEWER
TRAFFIC	PAVING
APPROVED BY: _____ DATE: _____	
MARICOPA COUNTY ENVIRONMENTAL SERVICES DEPARTMENT APPROVAL	
BY: <i>David E. Highfield</i>	DATE: <i>10/2/15</i>

Checked:	Drawn:	Wilson Project No.:	15009
By:	Description:	Date:	09/2015
By:	Description:	Date:	
By:	Description:	Date:	

VERIFY SCALES
BAR IS ONE INCH ON ORIGINAL DRAWING
0 1" = 1" SCALE
IF NOT ONE INCH ON THIS SHEET, ADJUST SCALES ACCORDINGLY



GENERAL NOTES:

1. CONTRACTOR SHALL OBTAIN ALL NECESSARY PERMITS PRIOR TO CONSTRUCTION.
2. ALL CONSTRUCTION SHALL CONFORM TO THE CITY EDS&PM, CITY STANDARD DETAILS, AND CURRENT MAG UNIFORM STANDARD SPECIFICATIONS AND DETAILS FOR PUBLIC WORKS CONSTRUCTION.
3. THIS SET OF PLANS HAS BEEN REVIEWED FOR COMPLIANCE WITH CITY REQUIREMENTS PRIOR TO ISSUANCE OF CONSTRUCTION PERMITS. HOWEVER, SUCH REVIEW SHALL NOT PREVENT THE CITY FROM REQUIRING CORRECTION OF ERRORS IN PLANS FOUND TO BE IN VIOLATION OF ANY LAW OR ORDINANCE.
4. THE CITY DOES NOT WARRANT ANY QUANTITIES SHOWN ON THESE PLANS.
5. THE CITY APPROVAL IS FOR GENERAL LAYOUT IN THE RIGHT-OF-WAY ONLY. THIS APPROVAL IS VALID FOR A PERIOD OF ONE YEAR. CONSTRUCTION PERMITS SHALL BE OBTAINED DURING THIS PERIOD OR THE PLANS SHALL BE RESUBMITTED FOR REVIEW AND APPROVAL.
6. AN APPROVED SET OF PLANS SHALL BE AVAILABLE ON THE JOB SITE AT ALL TIMES.
7. THE CITY CONSTRUCTION INSPECTOR SHALL BE NOTIFIED 48 HOURS PRIOR TO ANY CONSTRUCTION WORK AND INSPECTIONS (623-882-7979). CONSTRUCTION WORK CONCEALED WITHOUT INSPECTION BY THE CITY CONSTRUCTION INSPECTOR SHALL BE SUBJECT TO EXPOSURE AT THE CONTRACTOR'S EXPENSE.
8. ANY WORK PERFORMED WITHOUT THE APPROVAL OF THE CITY ENGINEER, OR DESIGNEE, AND ANY WORK/MATERIAL NOT IN CONFORMANCE WITH CITY ENGINEERING STANDARDS IS SUBJECT TO REMOVAL AND REPLACEMENT AT THE CONTRACTOR'S EXPENSE.
9. RIGHT-OF-WAY IMPROVEMENTS SHALL NOT BE ACCEPTED UNTIL "AS-BUILT" PLANS HAVE BEEN SUBMITTED AND APPROVED BY THE CITY. (SEE AS-BUILT REQUIREMENTS)
10. THE DEVELOPER IS RESPONSIBLE FOR THE REMOVAL OR RELOCATION OF ALL OBSTRUCTIONS WITHIN THE RIGHT-OF-WAY PRIOR TO STARTING NEW CONSTRUCTION.
11. THE DEVELOPER IS RESPONSIBLE FOR ARRANGING THE RELOCATION AND ASSOCIATED COSTS OF ALL UTILITIES. A UTILITY RELOCATION SCHEDULE SHALL BE SUBMITTED PRIOR TO THE ISSUANCE OF PERMITS.
12. THE DEVELOPER IS RESPONSIBLE FOR OBTAINING OR DEDICATING ALL REQUIRED RIGHTS-OF-WAY AND EASEMENTS TO THE CITY PRIOR TO ISSUANCE OF PERMITS.
13. THE CONTRACTOR SHALL CONTACT BLUE STAKE (602-263-1100) AT LEAST 48 HOURS PRIOR TO CONSTRUCTION. THE CONTRACTOR SHALL LOCATE ALL CONFLICTS PRIOR TO CONSTRUCTION.
14. THE CONTRACTOR SHALL BARRICADE CONSTRUCTION SITES AT ALL TIMES PER THE CITY OF PHOENIX TRAFFIC BARRICADE MANUAL. A TRAFFIC CONTROL PLAN SHALL BE SUBMITTED TO THE CITY FOR APPROVAL IN ADVANCE OF CONSTRUCTION.
15. POTABLE WATER IS NOT AVAILABLE FOR CONSTRUCTION USE OTHER THAN THE FILLING AND TESTING OF NEW LINES. THE UNLAWFUL REMOVAL OF WATER FROM A FIRE HYDRANT OR ANY OTHER SOURCE IS A VIOLATION OF THE MUNICIPAL CODE, PUNISHABLE BY FINE AND/OR IMPRISONMENT.
16. PRIOR TO MOVING OR DESTROYING PROTECTED NATIVE PLANT SPECIES, THE CONTRACTOR SHALL FILE A FORMAL NOTICE OF INTENT WITH THE ARIZONA DEPARTMENT OF AGRICULTURE (602-542-6408).
17. THE CONTRACTOR SHALL COMPLY WITH THE ENVIRONMENTAL PROTECTION AGENCY NATIONAL POLLUTION DISCHARGE ELIMINATION SYSTEM (NPDES) STORM WATER REQUIREMENTS ESTABLISHED FOR CONSTRUCTION SITES, ADEQ GENERAL PERMIT FOR DISCHARGE FROM CONSTRUCTION ACTIVITIES, AND THE CITY OF GOODYEAR STORM WATER MANAGEMENT PLAN.
18. NO PERSON SHALL USE ANY MECHANICAL EQUIPMENT FOR LAND LEVELING OR CLEARING, ROAD CONSTRUCTION, TRENCHING, EXCAVATING, DEMOLITION, NOR ENGAGE IN ANY EARTHMOVING ACTIVITY WITHOUT FIRST OBTAINING A PERMIT FROM THE MARICOPA COUNTY AIR QUALITY DEPARTMENT (602-506-0666), 1001 N. CENTRAL AVENUE, SUITE 150, PHOENIX, AZ 85003. (THIS NOTICE IS ISSUED PURSUANT TO A.R.S. 36-779.07, NOTICE OF BUILDING AGENCIES.)
19. THESE PLANS REFLECT CONDITIONS AS THEY EXIST AT THE TIME OF DESIGN. IF EXISTING CONDITIONS HAVE CHANGED BY THE TIME OF CONSTRUCTION THE CONTRACTOR SHALL NOTIFY THE CITY AND THESE PLANS MAY HAVE TO BE AMENDED PRIOR TO PROCEEDING WITH CONSTRUCTION ACTIVITIES.

SHEET INDEX:

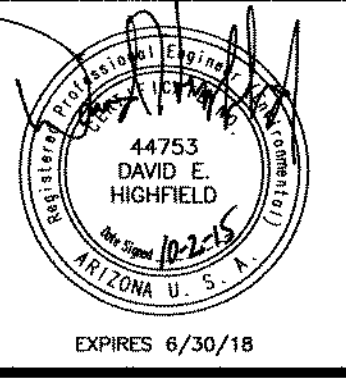
- GENERAL**
 G-1 COVER SHEET
 G-2 SHEET INDEX AND GENERAL NOTES
- DEMOLITION**
 D-1 DEMOLITION PLAN
- CIVIL**
 C-1 OVERALL SITE PLAN
- MECHANICAL**
 M-1 FLOW SCHEMATIC
 M-2 PLAN, SECTIONS AND DETAILS

WILSON ENGINEERS
 9633 South 48th Street, Suite 290
 Phoenix, Arizona 85044-5658
 Phone: (480) 893-8860
 Improving Arizona's Infrastructure Since 1942

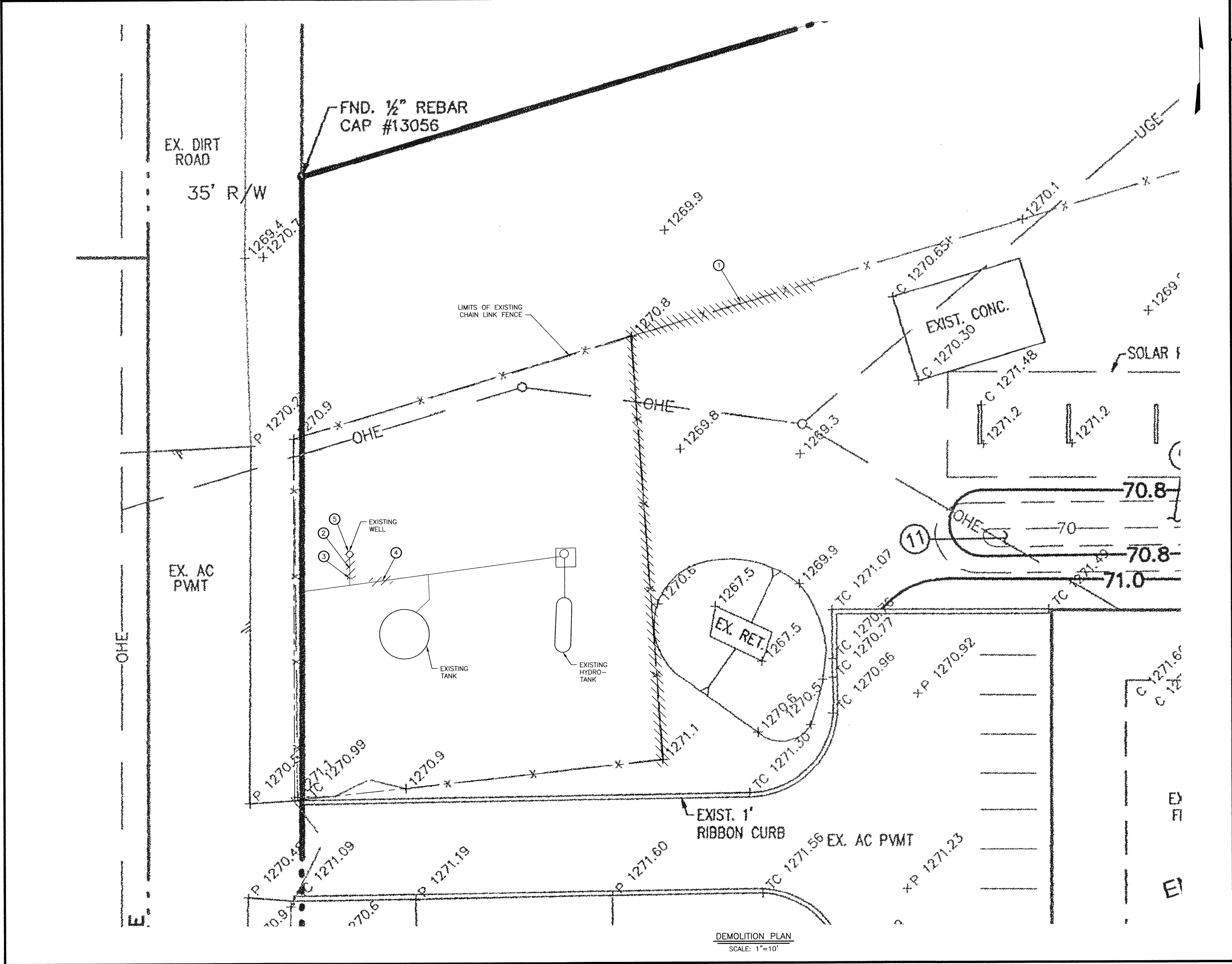
CITY OF GOODYEAR
 MOBILE ELEMENTARY SCHOOL
 WELL EQUIPPING PROJECT
 SHEET INDEX AND GENERAL NOTES
 WILSON PROJECT NO. 15009

Design: DEH	Drawn: GL	Checked: AEP
Date: 09/2015	Wilson Project No.: 15009	
Revision	Date	Description
		By

VERIFY SCALES
 BAR IS ONE INCH ON ORIGINAL DRAWING
 0 1"
 IF NOT ONE INCH ON THIS SHEET, ADJUST SCALES ACCORDINGLY



EXPIRES 6/30/18
 Sheet No. G-2



KEYED NOTES

- ① DEMO SECTION OF EXISTING CHAIN LINK FENCE
- ② SALVAGE FLOW METER FOR RELOCATION
- ③ DEMO 2" POTABLE WATER LINE AND CAP
- ④ REMOVE SECTION OF EXISTING 2" GALVANIZED STEEL POTABLE WATER LINE TO ALLOW CONNECTION OF NEW POTABLE WATER LINE FROM NEW WELL
- ⑤ AFTER NEW WELL PUMP IS ONLINE, EXISTING WELL SHALL BE ABANDONED IN ACCORDANCE WITH THE ADWR WELL ABANDONMENT HANDBOOK

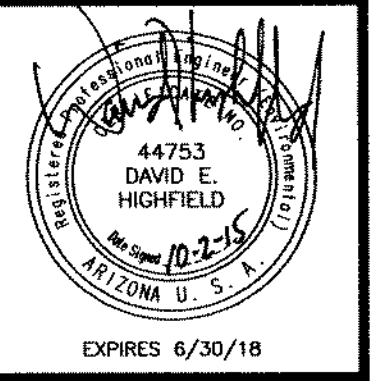
9633 South 48th Street, Suite 290
 Phoenix, Arizona 85044-5688
 Phone: (480) 893-8860
 Improving Arizona's Infrastructure Since 1942



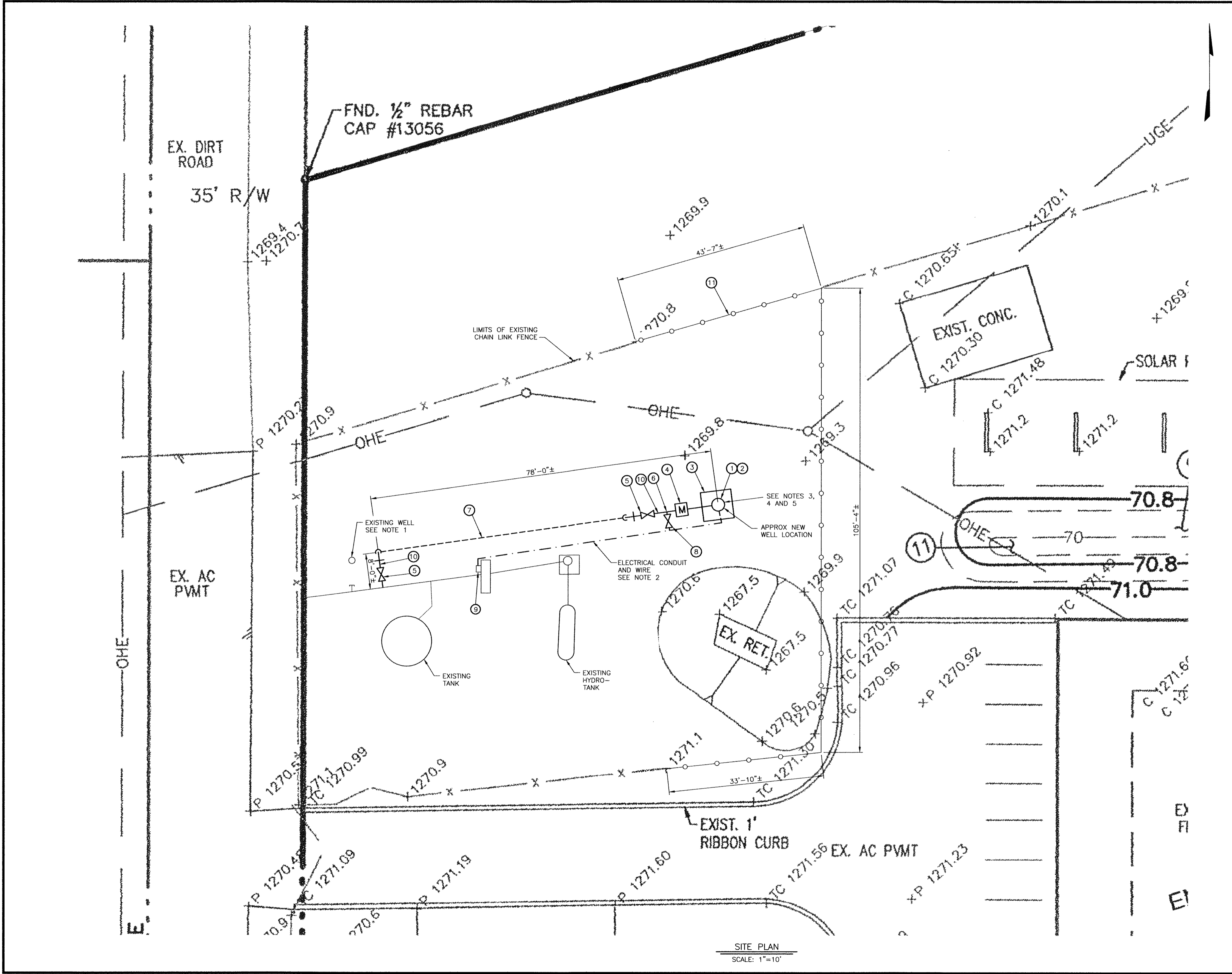
CITY OF GOODYEAR
 MOBILE ELEMENTARY SCHOOL
 WELL EQUIPPING PROJECT
 DEMOLITION PLAN
 WILSON PROJECT NO. 15009

Design:	DEH	Drawn:	gl	Checked:	
Date:	09/2015	Wilson Project No.:	15009		
Revision		Date		Description	By

VERIFY SCALES
 BAR IS ONE INCH ON ORIGINAL DRAWING
 0 1" IF NOT ONE INCH ON THIS SHEET, ADJUST SCALES ACCORDINGLY



Sheet No. D-1



KEYED NOTES

- ① SUBMERSIBLE PUMP
- ② TABLET CHLORINATOR
- ③ 6' SQUARE CONCRETE PUMP PAD. SEE SHEET M-2
- ④ RELOCATED EXISTING FLOW METER
- ⑤ 2" GATE VALVE
- ⑥ 1" CONNECTION
- ⑦ 2" SCHEDULE 80 CPVC PIPE BURIED 4' MINIMUM COVER. INSTALL FITTINGS AS NECESSARY TO MAINTAIN CLEARANCE AS REQUIRED
- ⑧ 3/4" GATE VALVE WITH HOSE BIBB SAMPLING TAP
- ⑨ EXISTING WELL PUMP STARTER
- ⑩ 2" SCHEDULE 40 GALVANIZED STEEL ABOVE GROUND PIPE TO MATCH EXISTING
- ⑪ 6' CHAIN LINK FENCE WITH 3 STRAND BARBED WIRE PER MAG STANDARD DETAIL 160 TO MATCH EXISTING

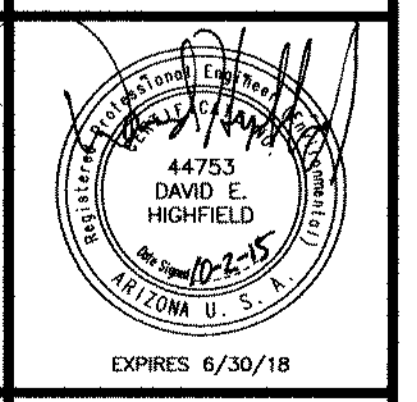
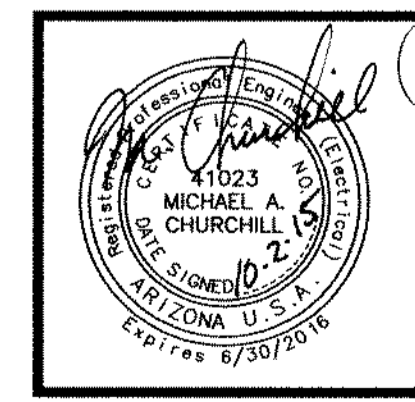
- NOTES:**
1. DISCONNECT AND REMOVE EXISTING POWER WIRING BETWEEN WELL PUMP STARTER AND EXISTING WELL PUMP.
 2. INSTALL NEW 3 # 12, + # 12 GROUND WIRE IN NEW 1" PVC SCHEDULE 40 CONDUIT AND CONNECT BETWEEN EXISTING WELL PUMP STARTER AND NEW WELL PUMP.
 3. GROUND WELL PUMP CASING IN ACCORDANCE WITH NEC 2011 SECTION 250-112 (M).
 4. IN ACCORDANCE WITH AAC R18-4-213, ALL MATERIALS ADDED AFTER JANUARY 1, 1993, WHICH MAY COME INTO CONTACT WITH DRINKING WATER SHALL CONFORM TO NATIONAL SANITATION FOUNDATION STANDARDS 60 AND 61.
 5. CONTRACTOR SHALL CHLORINATE WELL AS REQUIRED PER BULLETIN 8.

WILSON ENGINEERS
 Improving Arizona's Infrastructure Since 1942
 9633 South 48th Street, Suite 290
 Phoenix, Arizona 85044-5658
 Phone: (480) 893-8860

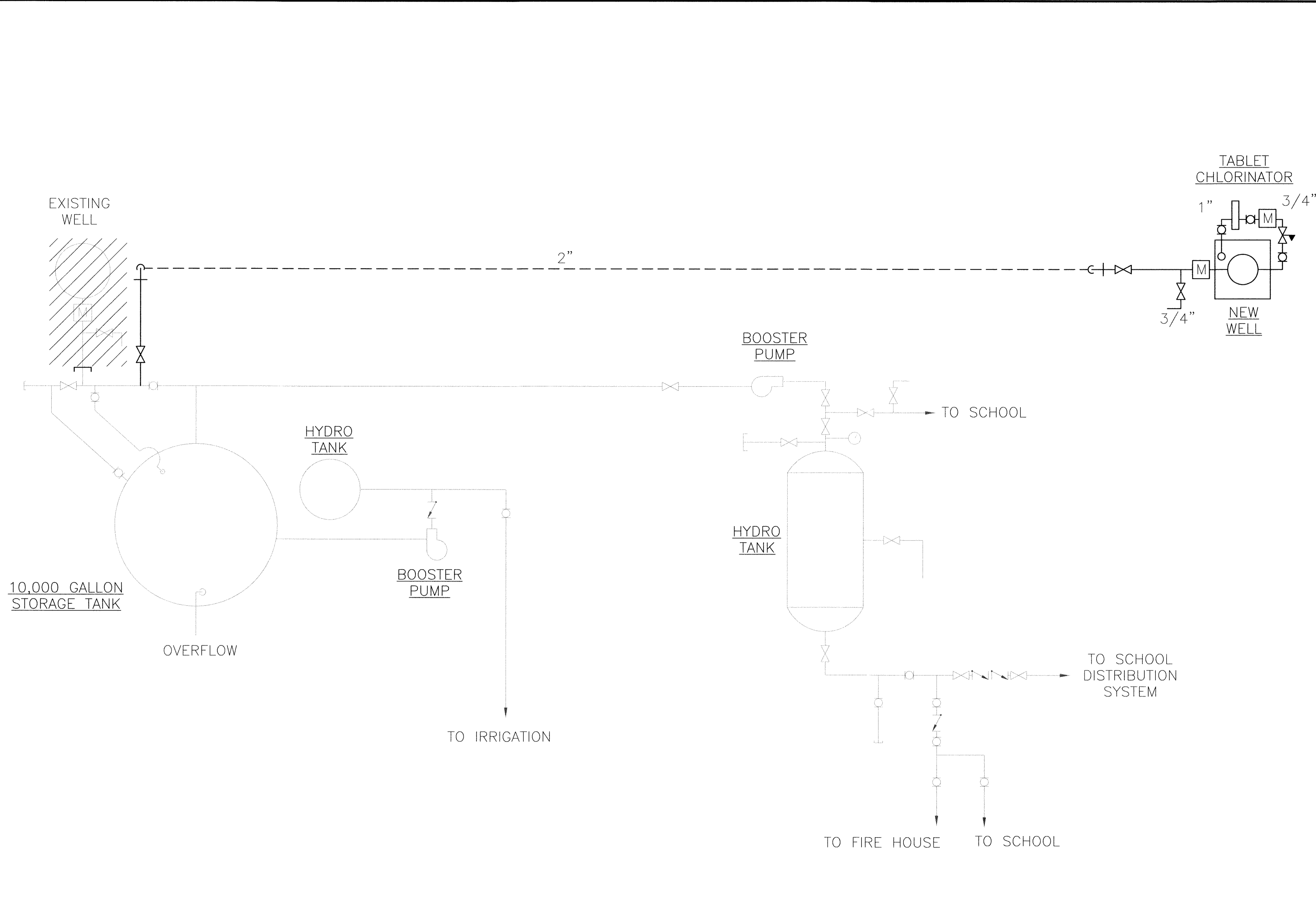
CITY OF GOODYEAR
 MOBILE ELEMENTARY SCHOOL
 WELL EQUIPPING PROJECT
 SITE PLAN
 WILSON PROJECT NO. 15009

Design:	DEH	Drawn:	gll	Checked:
Date:	09/2015	Wilson Project No.:	15009	
Revision		Date		By

VERIFY SCALES
 BAR IS ONE INCH ON ORIGINAL DRAWING
 0 1" IF NOT ONE INCH ON THIS SHEET, ADJUST SCALES ACCORDINGLY



SITE PLAN
 SCALE: 1"=10'

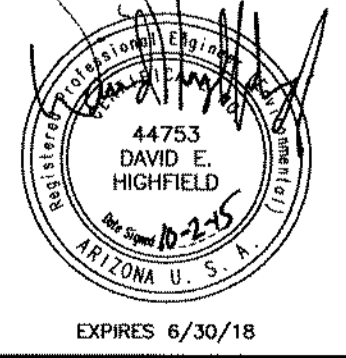


WILSON ENGINEERS
 9633 South 48th Street, Suite 290
 Phoenix, Arizona 85044-5658
 Phone: (480) 893-8860
 Improving Arizona's Infrastructure Since 1942

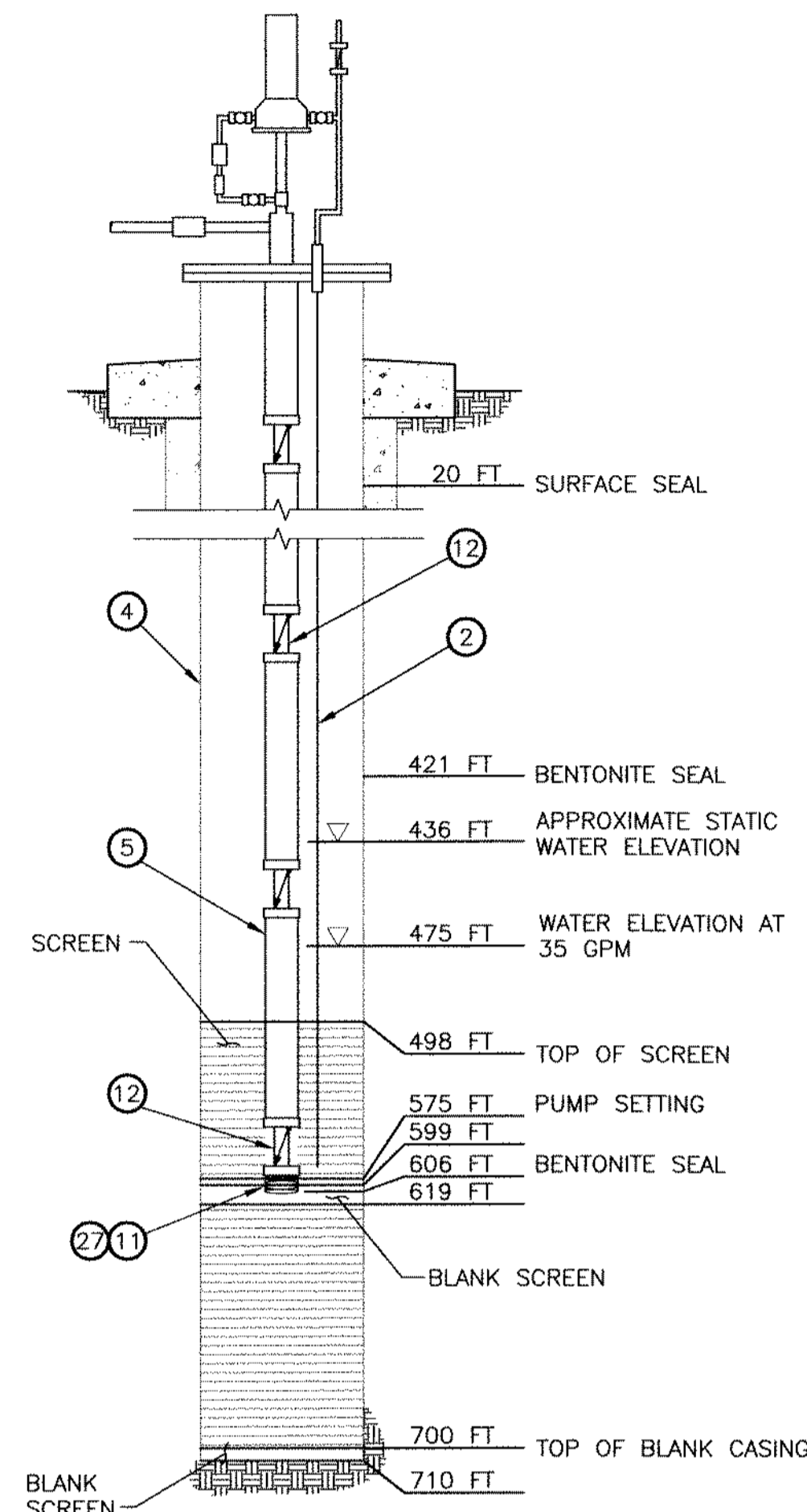
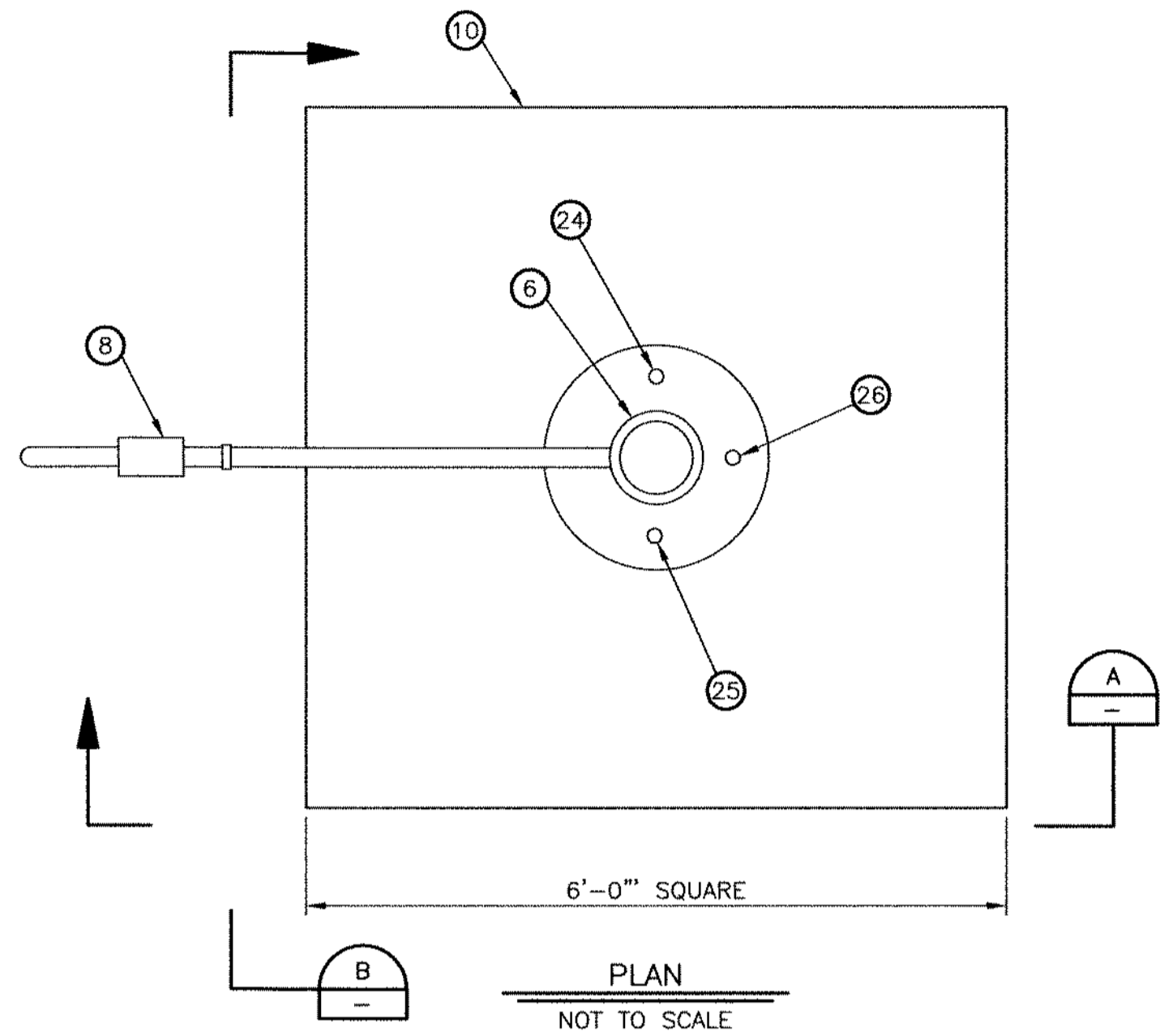
CITY OF GOODYEAR
 MOBILE ELEMENTARY SCHOOL
 WELL EQUIPPING PROJECT
 FLOW SCHEMATIC
 WILSON PROJECT NO. 15009

Design:	DEH	Drawn:	gJ	Checked:	AEP
Date:	09/2015	Wilson Project No.:	15009		
Revision		Description			By

VERIFY SCALES
 BAR IS ONE INCH ON ORIGINAL DRAWING
 0 1"
 IF NOT ONE INCH ON THIS SHEET, ADJUST SCALES ACCORDINGLY



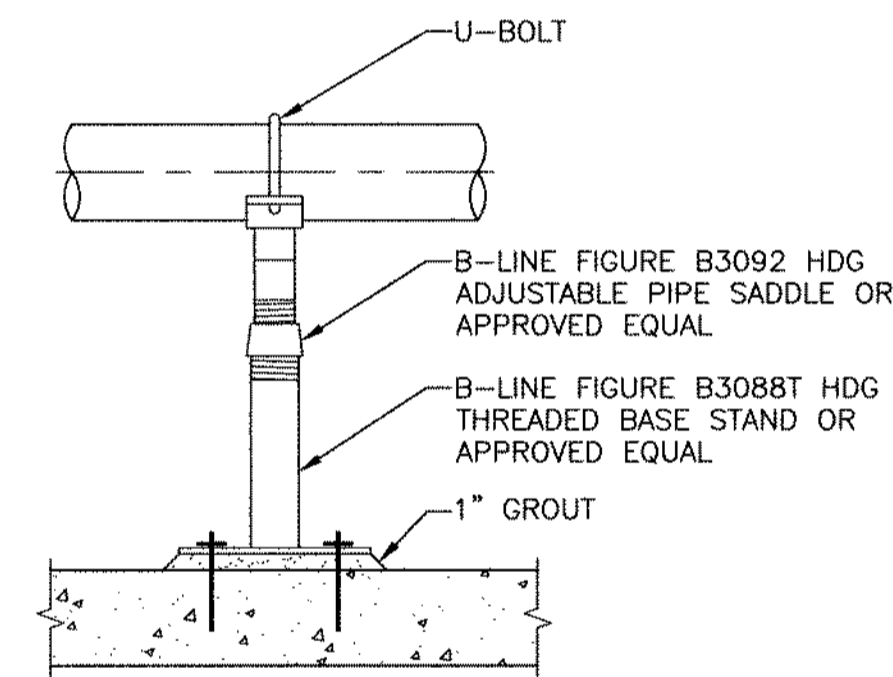
Sheet No. M-1



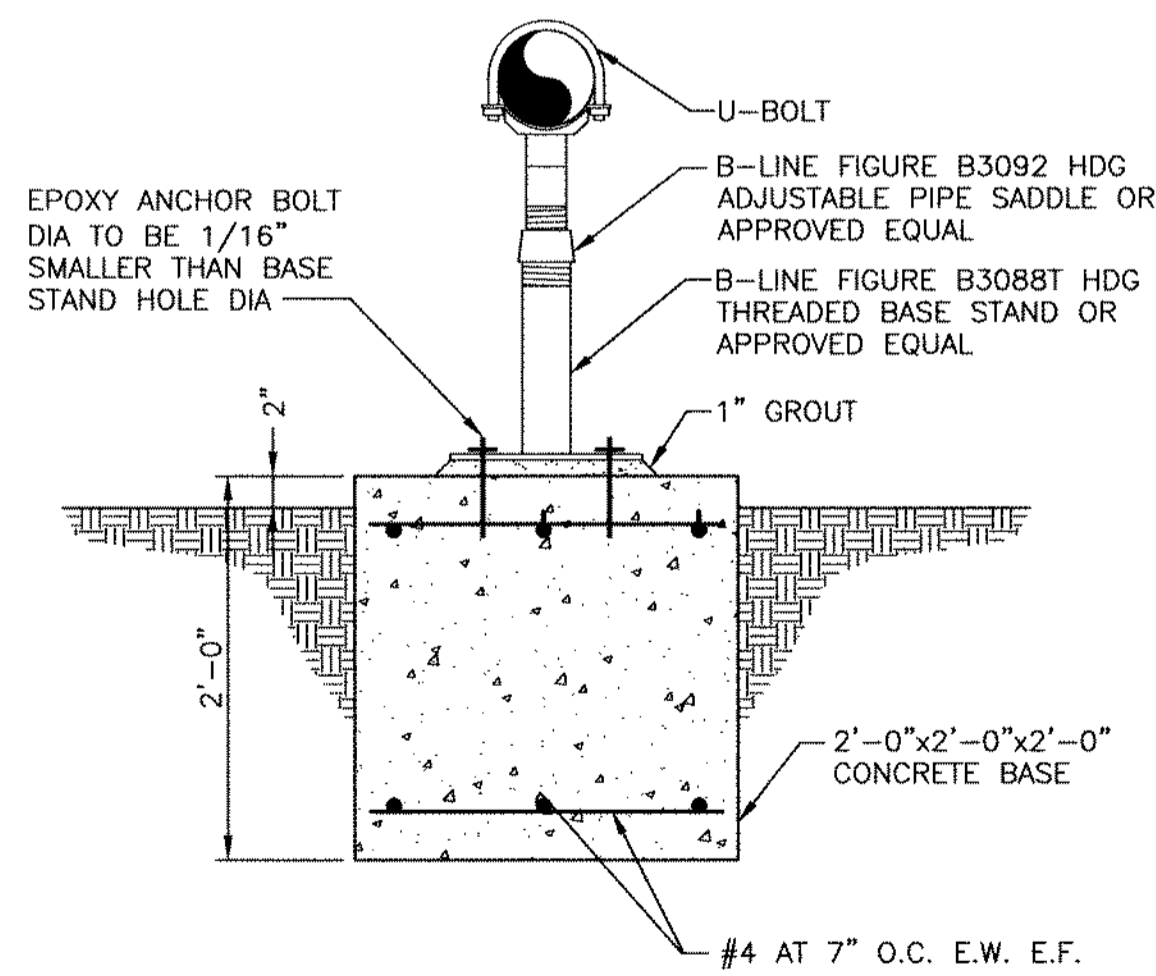
NOTE:
1. DEPTH BELOW TOP OF EXISTING CASING.

WELL PUMP SETTING

DETAIL	A
NOT TO SCALE	-

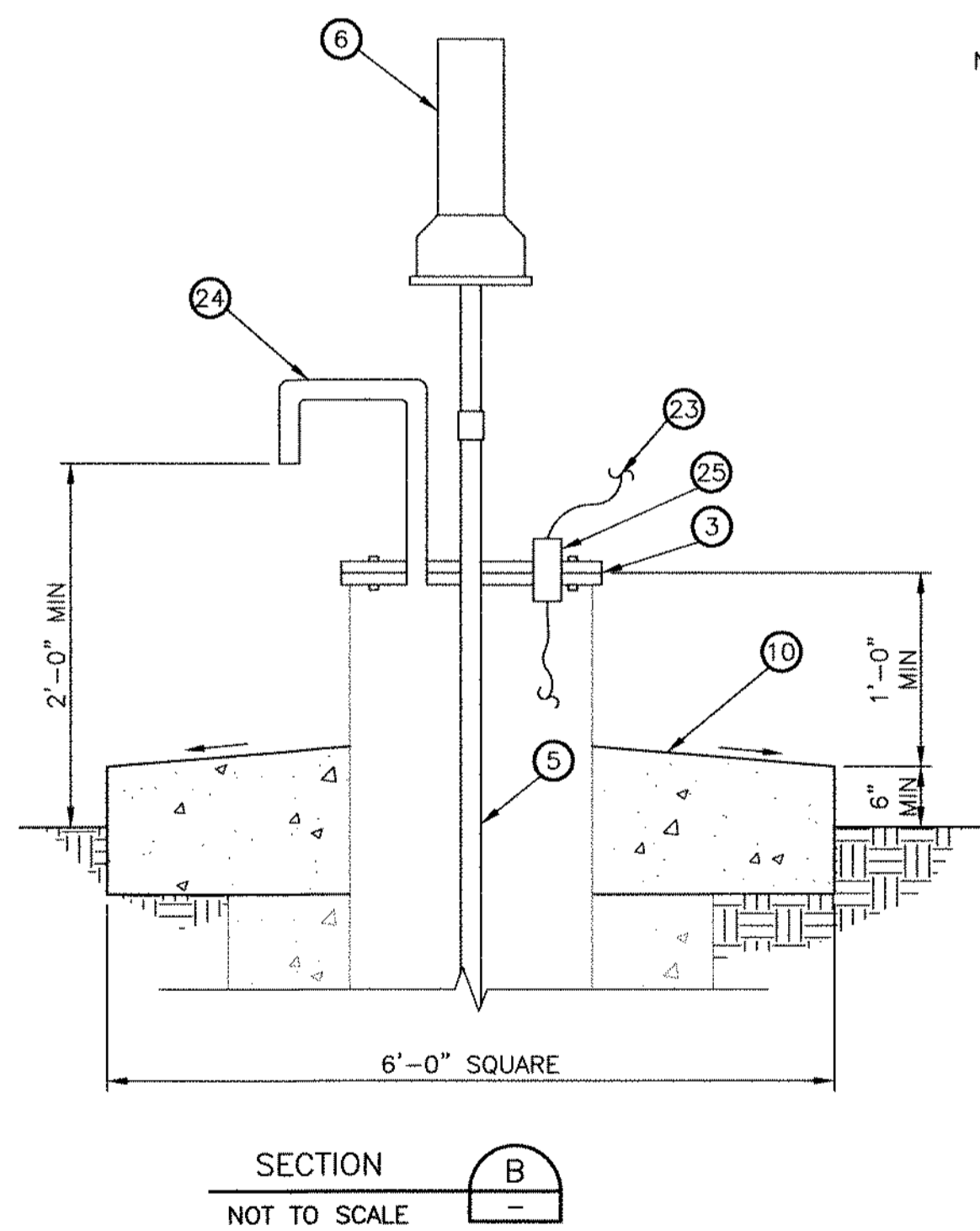
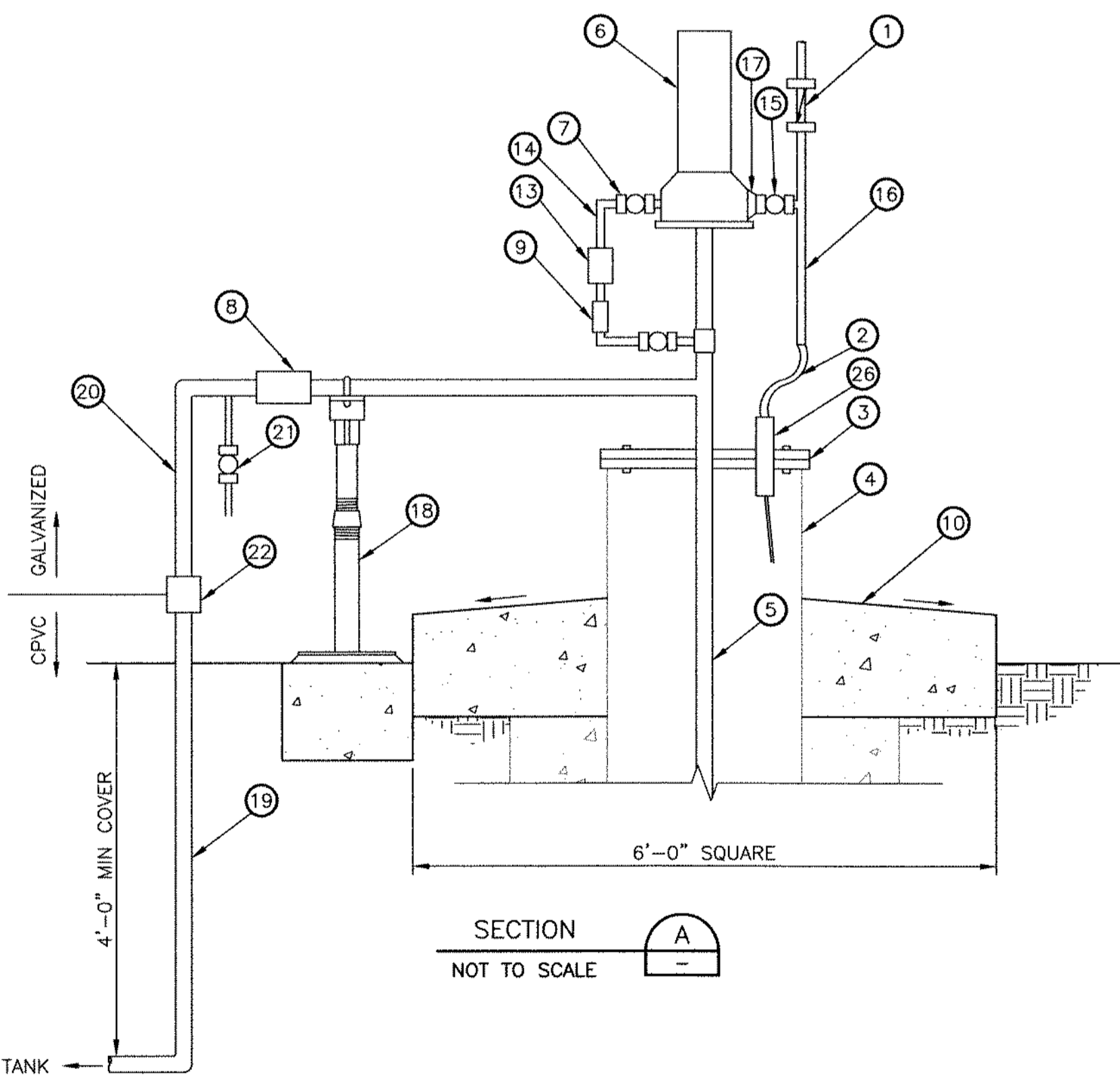


NOTE:
1. FOR USE ON CONCRETE SLABS.



ADJUSTABLE PIPE SUPPORT

DETAIL	B
NOT TO SCALE	-



KEYED NOTES

- 1 1" CHECK VALVE PER CHLORINATOR MANUFACTURER RECOMMENDATION
- 2 1" PE TUBING, RUN TUBING TO INTAKE SCREEN
- 3 WELL CAP WITH SEAL, TWO STEEL PLATES BOLTED TOGETHER WITH RESILIENT GASKET BETWEEN. BOTTOM PLATE SHALL BE WELDED TO WELL CASING
- 4 EXISTING 8 5/8" CASING AND SCREEN
- 5 2" COLUMN PIPE
- 6 CHLORINATOR SYSTEM MODEL 3012 AS MANUFACTURED BY PPG ACCU-TAB SYSTEM OR EQUAL
- 7 3/4" BALL VALVE (TYP)
- 8 RELOCATED EXISTING FLOW METER
- 9 3/4" PRESSURE REGULATOR PER CHLORINATOR MANUFACTURER RECOMMENDATION
- 10 2'-0" THICK 6'-0"x6'-0" CONCRETE PAD. SLOPE AWAY FROM WELL AT 1/4" PER FOOT MINIMUM SLOPE. INSTALL TWO MATS #4 AT 12" O.C. E.W. E.F.
- 11 4" SUBMERSIBLE PUMP SHALL BE 7.5 HP GOULDS MODEL 40GS75 WITH THREE-PHASE MOTOR OR EQUAL
- 12 2" CHECK VALVE PER PUMP MANUFACTURER RECOMMENDATION MOUNTED DIRECTLY ON PUMP. ANOTHER CHECK VALVE SHALL BE MOUNTED 25 FT ABOVE THE PUMPING LEVEL. SUBSEQUENT CHECK VALVES SHALL BE MOUNTED EVERY 200 FT MAXIMUM SPACING
- 13 3/4" FLOW METER PER CHLORINATOR MANUFACTURER RECOMMENDATION
- 14 3/4" CPVC
- 15 1" BALL VALVE
- 16 1" CPVC
- 17 CPVC REDUCER AS REQUIRED
- 18 ADJUSTABLE PIPE SUPPORTS AS REQUIRED PER DETAIL B THIS SHEET
- 19 2" CPVC
- 20 2" GALVANIZED ABOVE GROUND PIPE TO MATCH EXISTING
- 21 3/4" GATE VALVE WITH HOSE BIBB SAMPLING TAP
- 22 TRANSITION COUPLING AS REQUIRED
- 23 PUMP CABLE PER PUMP MANUFACTURER
- 24 1 1/2" CASING VENT GOOSENECK 2' ABOVE GRADE MINIMUM WITH #16 MESH
- 25 1 1/2" CONDUIT FOR PUMP CABLE, SEAL AROUND PUMP CABLE
- 26 1 1/2" CONDUIT FOR 1" PE TUBING, SEAL AROUND TUBING
- 27 TORQUE ARRESTOR TO ABSORB THRUST OF MOTOR START UPS AND TO KEEP PUMP CENTERED IN WELL. TORQUE STOPS SPACED AT REGULAR DISTANCES TO KEEP WIRE FROM RUBBING AGAINST WELL CASING

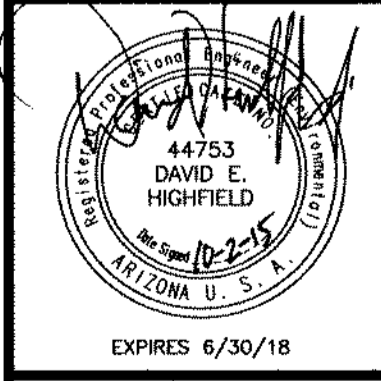
9633 South 48th Street, Suite 290
Phoenix, Arizona 85044-5658
Phone: (480) 893-8860
Improving Arizona's Infrastructure Since 1942

WILSON ENGINEERS

CITY OF GOODYEAR
MOBILE ELEMENTARY SCHOOL
WELL EQUIPPING PROJECT
PLAN, SECTION AND DETAILS
WILSON PROJECT NO. 15009

Design:	DEH	Checked:	AEP
Date:	09/2015	Project No.:	15009
Revision	Date	Description	By

VERIFY SCALES
BAR IS ONE INCH ON ORIGINAL DRAWING
0 1"
IF NOT ONE INCH ON THIS SHEET, ADJUST SCALES ACCORDINGLY



Sheet No. M-2