

# Significant Changes to the ICC A117.1 - Accessibility Standard - 2009 Edition

## Significant Changes to the A117.1 Accessibility Standard 2009 Edition

Based on the 2009 A117.1 Accessibility Standard



## Objectives

Upon completion of this seminar, participants will be better able to:

- Identify the most significant differences between the 2003 and the 2009 A117.1 Accessibility Standard.
- Explain the differences between the current and previous edition.
- Identify changes in organization and accessibility standard requirements.
- Identify the applicability of design, plan review and inspection requirements.
- Learn about the background, reasons and justification for changes.



Significant Changes to the ICC A117.1 - Accessibility Standard - 2009 Edition

3

## Description

- This course offers an overview and in-depth coverage of the changes from the 2003 to the 2009 A117.1 Accessibility Standard.
- It identifies important changes in organization, accessibility standard requirements and the applicability of these requirements to design, plan review and inspection.



Significant Changes to the ICC A117.1 - Accessibility Standard - 2009 Edition

2

## Organization

- Only a portion of changes addressed, identified for variety of reasons, including:
  - Frequency of application
  - Special significance
  - Change in application
- Importance of those changes not addressed are not to be diminished.



Significant Changes to the ICC A117.1 - Accessibility Standard - 2009 Edition

4

# Significant Changes to the ICC A117.1 - Accessibility Standard - 2009 Edition

## Reference and Resource



Significant Changes to the A117.1  
Accessibility Standard 2009 Edition



Significant Changes to the ICC A117.1 - Accessibility Standard - 2009 Edition

5

## Significant Change Series

### Types of Changes:

- Additions
- Modifications
- Clarifications
- Deletions

### Code text:

- Deleted text is shown as strike-through.
- New text is underlined.



Significant Changes to the ICC A117.1 - Accessibility Standard - 2009 Edition

7

## Revisions to text in the Standard

- Margin line indicates revision to text.
- ▪ Arrow indicates deletion of section or exception.



Significant Changes to the ICC A117.1 - Accessibility Standard - 2009 Edition

6

## International Code changes – Governmental Consensus Process

Places the final determination of code provisions in the hands of public safety officials who, with no vested financial interest, can legitimately represent the public interest. The principles are:

- Openness
- Transparency
- Balance of Interest
- Due Process
- An Appeals Process
- Consensus



Significant Changes to the ICC A117.1 - Accessibility Standard - 2009 Edition

8

# Significant Changes to the ICC A117.1 - Accessibility Standard - 2009 Edition

## A117.1 Standard changes – ANSI Consensus Process

Places the final determination of the standard's provisions in the hands of the 46 committee members (39 organizations and 6 individual members). The principles are:

- Openness
- Transparency
- Balance of Interest
- Due Process
- An Appeals Process
- Consensus



Significant Changes to the ICC A117.1 - Accessibility Standard - 2009 Edition

9

## A117.1 Standard: Change Process Logistics

- Operated on a 5 year development cycle.
- One cycle of development between editions – changes and public comments.
- Typical cycle: Years 1 and 2: study groups, Years 3, 4 and 5 processing changes and publication.
- Repeat



Significant Changes to the ICC A117.1 - Accessibility Standard - 2009 Edition

11

## International Codes – Code Change Process Logistics

- I-Code published every 3 years.
- One cycle of code development between editions.
- Code split into three groups: A, B and C.
- Single cycle for each group comprised of both Code Development and Final Action Hearings.
- Next edition published.
- Repeat



Significant Changes to the ICC A117.1 - Accessibility Standard - 2009 Edition

10



## Chapter 1: Application and Administration

- Purpose
- Referenced Documents
- Definitions

# Significant Changes to the ICC A117.1 - Accessibility Standard - 2009 Edition

## Chapter 1

- The purpose has been revised in incorporate the new Type C units in Chapter 10 and the new recreational requirements in Chapter 11.
- Referenced documents have been revised to include new standards for communication entry systems, amusement rides and playground.



Significant Changes to the ICC A117.1 - Accessibility Standard - 2009 Edition

13

## Chapter 2: Scoping

- Scoping



## Chapter 1

- Definitions have been added for coordination with new provisions for variable message signage and recreational facilities.
- Changes to Chapter 1 will be discussed with the chapter that contains the technical criteria.



Significant Changes to the ICC A117.1 - Accessibility Standard - 2009 Edition

14

## Chapter 2


- Reminder that the provisions in ICC A117.1 are applicable only to the extent referenced by the authority having jurisdiction.
- Not all significant changes discussed in this class will be scoped.



Significant Changes to the ICC A117.1 - Accessibility Standard - 2009 Edition

16

# Significant Changes to the ICC A117.1 - Accessibility Standard - 2009 Edition

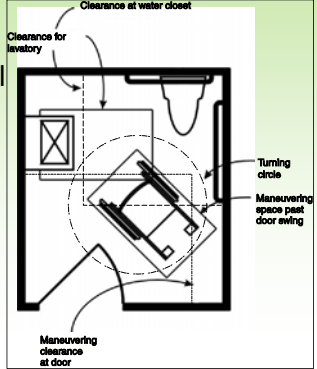


## Chapter 3: Building Blocks

- Overlap
- Reach range

## Overlap: 301.2 - Clearances at Doors, Fixtures, Appliances, and Elements

- Overlap will allow designs to use less space while still maintaining accessibility.
- Will lead to more consistent application.

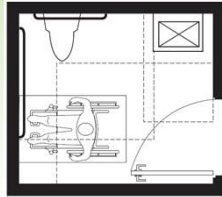


Significant Changes to the ICC A117.1 - Accessibility Standard - 2009 Edition

Workbook Page 1 19

## Overlap: 301.2 - Clearances at Doors, Fixtures, Appliances, and Elements


- Relocates the provisions from throughout the standard that allow clearances to overlap into the “building block” sections of Chapter 3.
- Adds door maneuvering clearances into the permitted overlap.




Significant Changes to the ICC A117.1 - Accessibility Standard - 2009 Edition

Workbook Page 1 18

## DISCUSSION Interpretation



- Can the maneuvering clearances at multiple doors overlap?



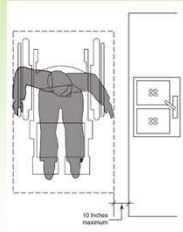
Significant Changes to the ICC A117.1 - Accessibility Standard - 2009 Edition

Workbook Page 1 20

# Significant Changes to the ICC A117.1 - Accessibility Standard - 2009 Edition

## Side Reach: 308.3.1 Unobstructed

- Clarify where the clear floor space must be located to be considered as an unobstructed reach to an element or control.
- To provide an “unobstructed” reach clear floor space must be within 10 inches horizontally of the element or wall.
- The element must be 15 to 48 inch in height.



Significant Changes to the ICC A117.1 - Accessibility Standard - 2009 Edition

Workbook Page 3

21

## Side Reach: 308.3.2 Over an Obstruction, Appliance, or Counter

- The exception allows the height of the laundry equipment to be 36 inches instead of the normal height limit of 34 inches.
- Additional revisions made to Section 611 to address front-loading machines.



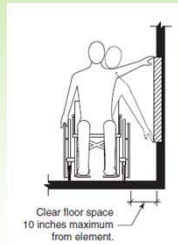
Significant Changes to the ICC A117.1 - Accessibility Standard - 2009 Edition

Workbook Page 4

23

## Side Reach: 308.3.1 Unobstructed

- Helps distinguish where “unobstructed” and “obstructed high reach” sections are used.
- Exception now limited to existing items “that are not altered” and at 54 inch height maximum.



Significant Changes to the ICC A117.1 - Accessibility Standard - 2009 Edition

Workbook Page 3

22

## Chapter 4: Accessible Routes

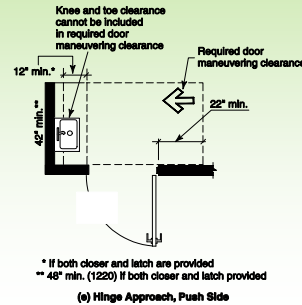
- Doors
- Ramps
- Curb cuts
- Elevators
- Platform lifts



# Significant Changes to the ICC A117.1 - Accessibility Standard - 2009 Edition

## Doors: 404.2.3 Obstructions to the Maneuvering Clearance (New)

- Prohibits the use of knee and toe clearances (i.e., under sinks or counters) when overlapping maneuvering space at a door.
- The intent is that users do not need to reach over an obstruction to operate the hardware.



Significant Changes to the ICC A117.1 - Accessibility Standard - 2009 Edition

Workbook Page 5

25

## DISCUSSION Interpretation



- Can a handrail extension overlap the door maneuvering clearance?



Significant Changes to the ICC A117.1 - Accessibility Standard - 2009 Edition

Workbook Page 5

27

## Doors: 404.2.3 Obstructions to the Maneuvering Clearance (New)

- Height previously not addressed so led to inconsistent application.
- Some officials accepted a minor projection (8 inches) but others permitted the full 25 inch depth.



Significant Changes to the ICC A117.1 - Accessibility Standard - 2009 Edition

Workbook Page 5

26

## Ramps: 405.1, 405.2 Allowances for ramps not part of an accessible route

- New exception to remind users that ramps that do not serve accessible elements are not required to comply with accessible ramp requirements.
- Accessible routes are required for both ingress and egress
- Ramps not regulated by the standard can have slopes steeper than what is permitted for an accessible ramp (per IBC).



Significant Changes to the ICC A117.1 - Accessibility Standard - 2009 Edition

Workbook Page 6

28

# Significant Changes to the ICC A117.1 - Accessibility Standard - 2009 Edition

## Ramps:



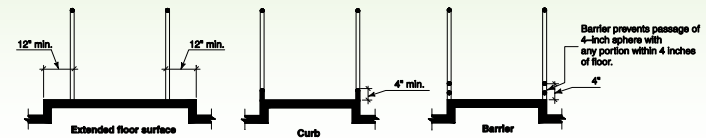
Significant Changes to the ICC A117.1 - Accessibility Standard - 2009 Edition

Workbook Page 6

29

## Ramp Edge Protection: 405.9 Along the Sides of Ramp Runs

- Three distinct options: extended floor, curb or barrier.
- The height of a curb serving as the edge protection is specified as 4 inches.



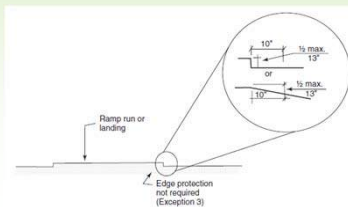
Significant Changes to the ICC A117.1 - Accessibility Standard - 2009 Edition

Workbook Page 8

31

## Ramp Edge Protection: 405.9 Along the Sides of Ramp Runs

- The intent of the edge protection is to prevent wheels or crutch tips from going over the edge.
- Exception 1 allows 6 inch high 'curb ramps' inside a building.
- Exception 4 addresses the transition between aisles to aisle accessways.



Significant Changes to the ICC A117.1 - Accessibility Standard - 2009 Edition

Workbook Page 8

30

## Curb Ramps: 406.3 Curbs Along the Flared Sides (New)

- The new marking requirements help provide users with a visual clue to determine the location of the ramp, the curb and where the curb flares are located.
- Where the adjacent curbs are painted this section requires the flared portion of the curb also be painted (**not** the flared sides).
- Will **not** require curbs to be painted. Applies only **if** they are.



Significant Changes to the ICC A117.1 - Accessibility Standard - 2009 Edition

Workbook Page 10

32



# Significant Changes to the ICC A117.1 - Accessibility Standard - 2009 Edition

## Curb Ramps: 406.3 Curbs Along the Flared Sides (New)



Significant Changes to the ICC A117.1 - Accessibility Standard - 2009 Edition

Workbook Page 10

33

## Elevator Call Buttons: 407.2.1.5 Signals at Landings (New)

- Heat sensitive buttons will need to provide audible indication of activation.
- Generally an audible signal should be provide unless call button activates where there is noticeable “mechanical motion.”



Significant Changes to the ICC A117.1 - Accessibility Standard - 2009 Edition

Workbook Page 12

35

## Elevator Call Buttons: 407.2.1.5 Signals at Landings (New)

- Provides two options so that a blind or visually impaired user will know that the activation of the elevator call button has been received.
- Buttons need to provide either audible or tactile feedback of button activation.



Significant Changes to the ICC A117.1 - Accessibility Standard - 2009 Edition

Workbook Page 12

34

## Elevator Car Control: 407.4.6.1, 407.4.8 Location and Sequential Step Scanning

- Elevator buttons with floor designations be installed within the 48-inch reach range or that a system of sequential step scanning be installed.
- Previously, a 54-inch height was allowed for certain elevator control panels.



Significant Changes to the ICC A117.1 - Accessibility Standard - 2009 Edition

Workbook Page 14

36

# Significant Changes to the ICC A117.1 - Accessibility Standard - 2009 Edition

## Elevator Car Control: 407.4.6.1, 407.4.8 Location and Sequential Step Scanning

- Where control buttons are not within normal reach range, requires sequential step scanning to allow users to select floor level without having to reach button that is out of range.
- Sequential step scanning will allow control panel to have buttons located outside of reach range.

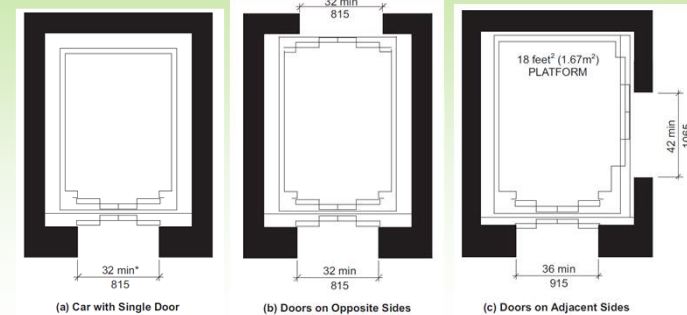


Significant Changes to the ICC A117.1 - Accessibility Standard - 2009 Edition

Workbook Page 14

37

## LULA Elevators: 408.3.3 Door Location and Width



Significant Changes to the ICC A117.1 - Accessibility Standard - 2009 Edition

Workbook Page 16

39

## LULA Elevators: 408.3.3 Door Location and Width

- Provides additional options regarding the location and size of doors.
- Allows doors on adjacent sides where the size of the elevator car is increased and a larger door is provided on the long side.



Significant Changes to the ICC A117.1 - Accessibility Standard - 2009 Edition

Workbook Page 16

38

## LULA Elevator: 408.4.1 Inside Dimensions of Cars

- Will allow more design options for car size and may provide additional access solutions for existing buildings.
- Minimum depth eliminated and replace with minimum area requirement.
- Would require a 48 inch minimum depth to meet clear floor space of 305.3.



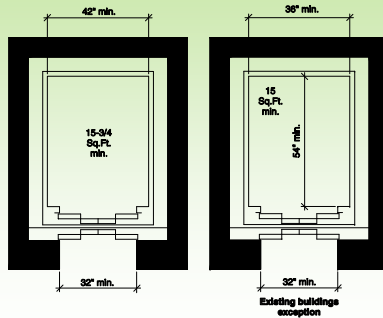
Significant Changes to the ICC A117.1 - Accessibility Standard - 2009 Edition

Workbook Page 18

40

# Significant Changes to the ICC A117.1 - Accessibility Standard - 2009 Edition

## LULA Elevator: 408.4.1 Inside Dimensions of Cars



NOTE: Exception not applicable to cars with doors on adjacent sides.



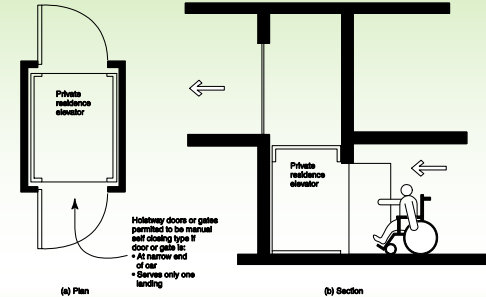
Significant Changes to the ICC A117.1 - Accessibility Standard - 2009 Edition

Workbook Page 18

41

## Private Residence Elevators: 409.3.1 Power Operation of Doors and Gates

- Provides clear practical limit for allowance of manual door on private residence elevator.



Significant Changes to the ICC A117.1 - Accessibility Standard - 2009 Edition

Workbook Page 20

43

## LULA Elevator: 408.4.1 Inside Dimensions of Cars

- Exception 1 deleted: Allowed by base paragraph and permitted by exception in 408.3.3.2.
- Exception 2 not applicable when doors on adjacent sides. Difficult to maneuver on small cars.



Significant Changes to the ICC A117.1 - Accessibility Standard - 2009 Edition

Workbook Page 18

42

## Private Residence Elevators: 409.3.1 Power Operation of Doors and Gates

- Manually operated doors are limited to where the user would enter and leave the car by only using a forward approach.
- Limit of “serves only one landing” and “narrow end” ensures using a forward approach to doors.
- Users should never have to reach behind to operate a manual door.
- Previously could have served multiple landings and required reaching behind.



Significant Changes to the ICC A117.1 - Accessibility Standard - 2009 Edition

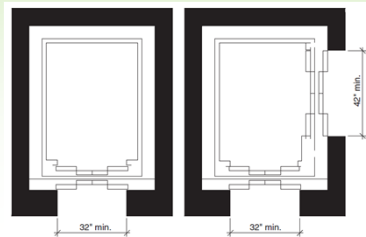
Workbook Page 20

44

# Significant Changes to the ICC A117.1 - Accessibility Standard - 2009 Edition

## Private Residence Elevators: 409.3.3 Door or Gate Location and Width

- Provides additional design options by allowing doors to be located at the side of the elevator car instead of limiting them to the narrow end.



Significant Changes to the ICC A117.1 - Accessibility Standard - 2009 Edition

Workbook Page 22

45

## Platform Lifts: 410.2, 410.5 Lift Entry and Clear Floor Space

- Maneuvering and functioning within lifts that have doors on adjacent sides.
- Coordinates doors and gates with the access ramp.
- Width of approach ramp tied to size of platform. Previously ramp could have been narrower than door or gate it served.



Significant Changes to the ICC A117.1 - Accessibility Standard - 2009 Edition

Workbook Page 23

47

## Private Residence Elevators: 409.3.3 Door or Gate Location and Width

- Clear width of the door must be increased where located on the long side of the elevator.
- Doors located on side must be power assisted or a low-energy power-operated door which will help allow for maneuvering.



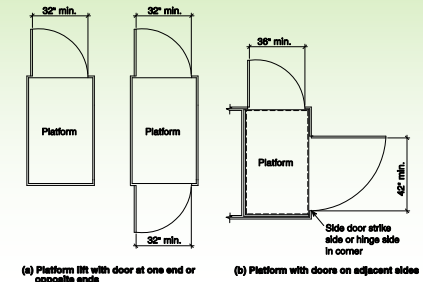
Significant Changes to the ICC A117.1 - Accessibility Standard - 2009 Edition

Workbook Page 22

46

## Platform Lifts: 410.2, 410.5 Lift Entry and Clear Floor Space

- Requires increased width for end door if a side door is also provided.



(a) Platform lift with door at one end or opposite ends

(b) Platform with doors on adjacent sides



Significant Changes to the ICC A117.1 - Accessibility Standard - 2009 Edition

Workbook Page 23

48

# Significant Changes to the ICC A117.1 - Accessibility Standard - 2009 Edition

## Platform Lifts:

### 410.2, 410.5 Lift Entry and Clear Floor Space

- Provides additional maneuvering space for 90 degree turn through side door (conceptually similar to T-turn of 304).
- Manual side door must have strike in corner (hinge side approach while on lift).



Significant Changes to the ICC A117.1 - Accessibility Standard - 2009 Edition

Workbook Page 23

49

## Platform Lifts:

### 410.2, 410.5 Lift Entry and Clear Floor Space

- Platform size increased if doors on adjacent sides.
- 60 inch depth selected to coordinate with alcove requirements.
- Existing buildings can use smaller size lift if doors on adjacent sides but 60 inch depth maintained.



Significant Changes to the ICC A117.1 - Accessibility Standard - 2009 Edition

Workbook Page 23

51

## Platform Lifts:

### 410.2, 410.5 Lift Entry and Clear Floor Space

- Manual doors on ends only if serving one landing.



Significant Changes to the ICC A117.1 - Accessibility Standard - 2009 Edition

Workbook Page 23

50



## Chapter 5: General Site and Building Elements

- Parking
- Stairways

# Significant Changes to the ICC A117.1 - Accessibility Standard - 2009 Edition

## Chapter 5

- Reminder - Watch for the margin lines and arrows to indicate where there has been a change or deletion in the standard.
- No changes in Chapter 5 are discussed in the Significant Changes workbook.



Significant Changes to the ICC A117.1 - Accessibility Standard - 2009 Edition

53

## Drinking Fountains: 602.2 Clear Floor Space

- Two exceptions that previously allowed for a parallel approach to existing drinking fountains have been deleted.



Significant Changes to the ICC A117.1 - Accessibility Standard - 2009 Edition

Workbook Page 26

55

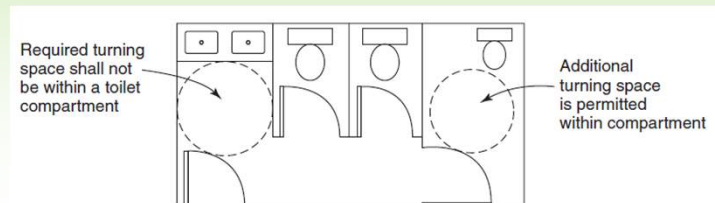
## Chapter 6: Plumbing Elements and Facilities

- Drinking fountains
- Toilet & bathing rooms
- Laundry
- Sauna & steam rooms



## Toilet and Bathing Rooms: 603.2 Clearances

- The required turning space shall not be located only within a toilet compartment and potentially unavailable for use.



Significant Changes to the ICC A117.1 - Accessibility Standard - 2009 Edition

Workbook Page 27

56

# Significant Changes to the ICC A117.1 - Accessibility Standard - 2009 Edition

## Mirrors:

### 603.3 In Toilet and Bathing Rooms

- Clarifies where an accessible mirror is required to be installed within toilet or bathing rooms.



Significant Changes to the ICC A117.1 - Accessibility Standard - 2009 Edition

Workbook Page 29

57

## Mirrors:

### 603.3 In Toilet and Bathing Rooms

- Within Accessible and Type A units, accessible mirrors must be installed above the accessible lavatory.
- Type B units do not address mirrors.



Significant Changes to the ICC A117.1 - Accessibility Standard - 2009 Edition

Workbook Page 29

59

## Mirrors:

### 603.3 In Toilet and Bathing Rooms

- Requires an accessible mirror over the accessible lavatory where mirrors are provided over non-accessible lavatories.
- Mirror above counter without a lavatory will generally be installed at the 40 inch maximum height.
- An exception will allow the use of a wall-mounted mirror as an alternative in public facilities.



Significant Changes to the ICC A117.1 - Accessibility Standard - 2009 Edition

Workbook Page 29

58

## Diaper Changing Tables:

### 603.5 (New)

- Diaper changing tables must comply with both the operable parts and work surface requirements.



Significant Changes to the ICC A117.1 - Accessibility Standard - 2009 Edition

Workbook Page 31

60

# Significant Changes to the ICC A117.1 - Accessibility Standard - 2009 Edition

## Diaper Changing Tables: 603.5 (New)

- Does not require the tables to be installed but applies if one is installed.
- Regulates not only built-in changing tables but also kit or component-type table mounted on wall after construction is completed.
- References require forward-approach; clear floor space; proper height; and latch or other operable parts comply with operation and reach range.



Significant Changes to the ICC A117.1 - Accessibility Standard - 2009 Edition

Workbook Page 31

61

## Towel Dispenser & Hand Dryer: 603.6 Operable Parts

- Relocated to general bathroom requirements and is no longer buried within the lavatory requirements to make it more apparent.
- Towel dispensers and hand dryers need to be located so that the reach depth over an obstruction is limited.
- Originally developed and included based on efforts of Little People of America (LPA).



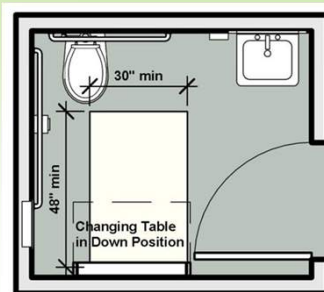
Significant Changes to the ICC A117.1 - Accessibility Standard - 2009 Edition

Workbook Page 33

63



## Interpretation



- Can a diaper changing table overlap the clearance for the water closet inside an toilet room or accessible stall?



Significant Changes to the ICC A117.1 - Accessibility Standard - 2009 Edition

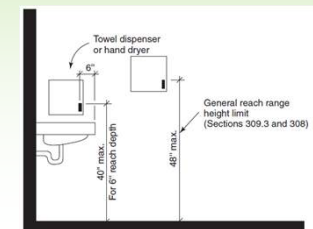
Workbook Page 31

62

## Towel Dispenser & Hand Dryer: 603.6 Operable Parts

TABLE 603.6 606.7 Maximum Reach Depth and Height

Maximum Reach Depth	0.5 inch (13 mm)	2 inches (50 mm)	5 inches (125 mm)	6 inches (150 mm)	9 inches (230 mm)	11 inches (280 mm)
Maximum Reach Height	48 inches (1220 mm)	46 inches (1170 mm)	42 inches (1065 mm)	40 inches (1015 mm)	36 inches (915 mm)	34 inches (865 mm)



Significant Changes to the ICC A117.1 - Accessibility Standard - 2009 Edition

Workbook Page 33

64



# Significant Changes to the ICC A117.1 - Accessibility Standard - 2009 Edition

## Towel Dispenser & Hand Dryer: 603.6 Operable Parts

- Need to determine how requirements apply where multiple lavatories within a room.
- Nothing in standard requires relationship between accessible lavatory and regulated dispenser, but it would seem appropriate.



Significant Changes to the ICC A117.1 - Accessibility Standard - 2009 Edition

Workbook Page 33

65

## Dispensers: 604.7, 604.11.7 Water Closets and Toilet Compartments

- Substantial revisions affecting location and access to toilet paper dispensers.
- Provides greater range for location of dispenser (12 inch range above and 18 inch range below grab bar).
- Locates dispenser from back wall instead of front of the water closet.
- Addresses relationship between grab bar and dispenser (above, below, behind).



Significant Changes to the ICC A117.1 - Accessibility Standard - 2009 Edition

Workbook Page 38

67

## Grab Bars: 604.5, 607.4 Blocking and Swing-up Grab Bar Requirements

- Exceptions and provisions that apply to blocking for grab bars and shower seats in residential dwelling and sleeping units have been relocated to Chapter 10.
- Swing-up grab bar requirements moved to Type B dwelling units.
- In most situations this is just a relocation of the requirements.

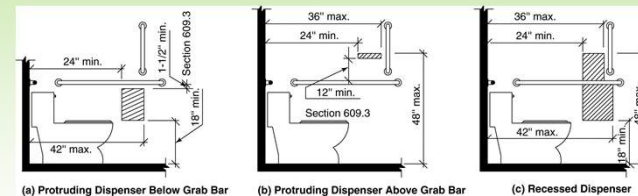


Significant Changes to the ICC A117.1 - Accessibility Standard - 2009 Edition

Workbook Page 35

66

## Dispensers: 604.7, 604.11.7 Water Closets and Toilet Compartments



Note: For children's dimensions, see Figure 604.11.7 in the Standard.



Significant Changes to the ICC A117.1 - Accessibility Standard - 2009 Edition

Workbook Page 38

68

# Significant Changes to the ICC A117.1 - Accessibility Standard - 2009 Edition

## Dispensers:

### 604.7, 604.11.7 Water Closets and Toilet Compartments

- Allows for recessed dispenser.



Significant Changes to the ICC A117.1 - Accessibility Standard - 2009 Edition

Workbook Page 38

69

## Wheelchair-Accessible Compartments: 604.9.3 Doors

- The location of toilet compartment doors is now regulated in a new table.

Door Opening Location	Measured From	Dimension
Front Wall or Partition	From the side wall or partition closest to the water closet	56 inches (1420 mm) minimum
	From the side wall or partition farthest from the water closet	4 inches (102 mm) maximum
Side Wall or Partition	From the rear wall	52 inches (1320 mm) minimum
	From the front wall or partition	4 inches (102 mm) maximum



Significant Changes to the ICC A117.1 - Accessibility Standard - 2009 Edition

Workbook Page 41

71

## Dispensers:

### 604.7, 604.11.7 Water Closets and Toilet Compartments

- Measures to “outlet of dispenser” versus “centerline.”
- Clearly ties dispenser to grab bar clearances of 609.3 and coordinates with a revision in that section for recessed dispensers.
- Does not match ADA & ABA AG – Committee believes this is more detailed and substantiated and would be considered as an acceptable alternate method.

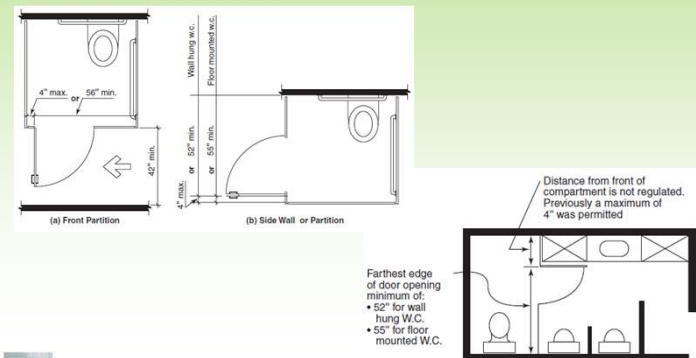


Significant Changes to the ICC A117.1 - Accessibility Standard - 2009 Edition

Workbook Page 38

70

## Wheelchair-Accessible Compartments: 604.9.3 Doors



Significant Changes to the ICC A117.1 - Accessibility Standard - 2009 Edition

Workbook Page 41

72

# Significant Changes to the ICC A117.1 - Accessibility Standard - 2009 Edition

## Wheelchair-Accessible Compartments: 604.9.3 Doors

- Provides additional design options for door locations if compartment is built larger than minimum required size (either of two measurements).
- No change if compartment is built to minimum size.
- Previously door had to be 4 inches maximum from corner.



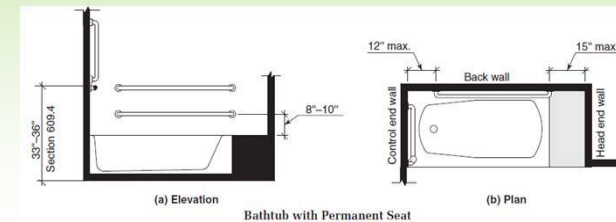
Significant Changes to the ICC A117.1 - Accessibility Standard - 2009 Edition

Workbook Page 41

73

## Bath Tubs: 607.4.1.1, 607.4.2.1 Grab Bars

- The height of the lower grab bar on the back wall has been modified to permit a range versus a specific height.



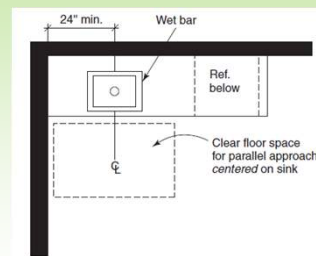
Significant Changes to the ICC A117.1 - Accessibility Standard - 2009 Edition

Workbook Page 45

75

## Lavatories and Sinks: 606.2 Clear Floor Space

- Where parallel approach is permitted, the clear floor space must be “centered” on the fixture.
- Result is that the sink is at least 24 inches from adjacent wall.



Significant Changes to the ICC A117.1 - Accessibility Standard - 2009 Edition

Workbook Page 43

74

## Bath Tubs: 607.4.1.1, 607.4.2.1 Grab Bars

- Grab bars on the control end are modified so consistent regardless of type of seat used.
- Slight change is allowing grab bar to start “near the front” instead of “at the front” edge of the bathtub.



Significant Changes to the ICC A117.1 - Accessibility Standard - 2009 Edition

Workbook Page 45

76

# Significant Changes to the ICC A117.1 - Accessibility Standard - 2009 Edition

## Shower Compartments: 608.2 Sizes and Clearances

- Revisions also include a format change to coordinate the three sections dealing with the various types of shower compartments.
- Seat requirements moved into each section versus being in separate section.
- Permanent non-folding seats will be permitted in roll-in showers larger than the minimum dimensions.



Significant Changes to the ICC A117.1 - Accessibility Standard - 2009 Edition

Workbook Page 47

77

## Roll-in-Type Showers: 608.3.2 Grab Bars

- Removed text related to roll-in showers without seats because roll-in shower now requires a seat.
- Grab bars should not be located over a seat because then the user could not use the wall for bracing.



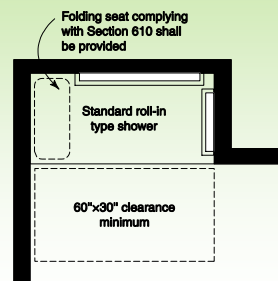
Significant Changes to the ICC A117.1 - Accessibility Standard - 2009 Edition

Workbook Page 51

79

## Shower Compartments: 608.2 Sizes and Clearances

- Roll-in showers will now require seats.
- Previously just regulated if provided.



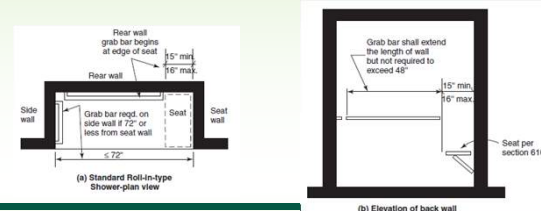
Significant Changes to the ICC A117.1 - Accessibility Standard - 2009 Edition

Workbook Page 47

78

## Roll-in-Type Showers: 608.3.2 Grab Bars for Standard

- Added text addresses where shower size exceeds minimum required size.
- Length of back wall grab bar not required to exceed 48 inches and end wall grab bar not required if more than 72 inches from seat wall.



Significant Changes to the ICC A117.1 - Accessibility Standard - 2009 Edition

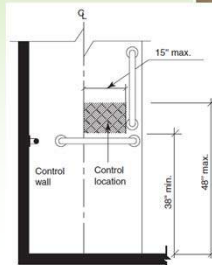
Workbook Page 51

80

# Significant Changes to the ICC A117.1 - Accessibility Standard - 2009 Edition

## Transfer-Type Showers: 608.4.1 Controls and Hand Showers

- Places the controls closer to the opening, ensuring they are reachable from outside the compartment.



Significant Changes to the ICC A117.1 - Accessibility Standard - 2009 Edition

Workbook Page 52

81

## Standard Roll-in Showers: 608.4.2 Controls and Hand Showers

- Changes were necessary due to required installation of a folding seat in a roll-in shower.
- Previously where seat was not installed controls could go on any wall of the shower.



Significant Changes to the ICC A117.1 - Accessibility Standard - 2009 Edition

Workbook Page 53

83

## Transfer-Type Showers: 608.4.1 Controls and Hand Showers

- Previously allowed controls either to the "left or right of the centerline of the seat."
- Keeps controls within reach of seat but allows a person to operate and adjust them from outside compartment prior to entering.
- Essentially reduces the space where controls can be located by one-half.



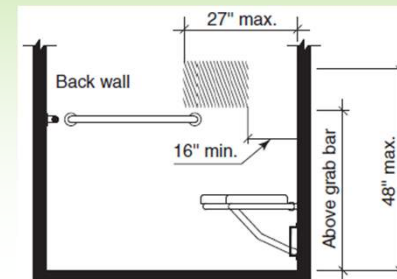
Significant Changes to the ICC A117.1 - Accessibility Standard - 2009 Edition

Workbook Page 52

82

## Standard Roll-in Showers: 608.4.2 Controls and Hand Showers

- Control location is now limited to the back wall within reach of the seat.



Significant Changes to the ICC A117.1 - Accessibility Standard - 2009 Edition

Workbook Page 53

84

# Significant Changes to the ICC A117.1 - Accessibility Standard - 2009 Edition

## Standard Roll-in Showers: 608.4.2 Controls and Hand Showers

- Eliminated 38 inch minimum height for controls.
- Allows controls to be located at a lower height where the grab bar is installed at lower limits of the permitted range.



Significant Changes to the ICC A117.1 - Accessibility Standard - 2009 Edition

Workbook Page 53

85

## Hand Showers: 608.5

- In alternate roll-in showers, the fixed shower head can be on end wall adjacent to seat or the back wall.
- 608.5 exception modified to provide new limitations:
  - Fixed shower head limited to 48 inch height if replacing hand shower.
  - Option for fixed shower permitted "in other than Accessible units and Type A units."



Significant Changes to the ICC A117.1 - Accessibility Standard - 2009 Edition

Workbook Page 54

87

## Hand Showers: 608.5

- The requirements for hand held showers and the option of using a fixed shower head at a 48-inch height have been revised and clarified.
- Phrase "where provided" clarifies that an adjustable-height hand shower is not required.



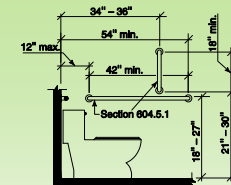
Significant Changes to the ICC A117.1 - Accessibility Standard - 2009 Edition

Workbook Page 54

86

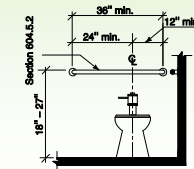
## Grab Bars: 609 Clearance and Height

- Change in 609.4 primarily revised to create separate children's section.
- Does include specific vertical grab bar requirement.



Note: For adult dimensions see Fig. 604.5.1

(a) Side wall view



Note: For adult dimensions see Fig. 604.5.2

(b) Rear wall view



Significant Changes to the ICC A117.1 - Accessibility Standard - 2009 Edition

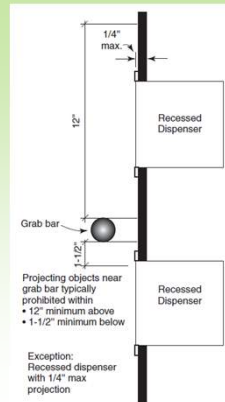
Workbook Page 56

88

# Significant Changes to the ICC A117.1 - Accessibility Standard - 2009 Edition

## Grab Bars: 609 Clearance and Height

- Provisions are added to address recessed toilet paper dispensers and their location in relationship to the clear spaces behind the grab bars.



Significant Changes to the ICC A117.1 - Accessibility Standard - 2009 Edition

Workbook Page 56

89

## Washing Machines and Clothes Dryers: 611 Height of and Approach

- Clear floor space access to washers and dryers has been modified depending upon whether the machine is a front- or top-loading machine.
- Standard previously did not distinguish between the two types.
- Provides additional flexibility and recognizes a machine type that is more common and often provides better access.



Significant Changes to the ICC A117.1 - Accessibility Standard - 2009 Edition

Workbook Page 59

91

## Grab Bars: 609 Clearance and Height

- Swing-up grab bar requirements deleted here and moved into the Type B unit provisions.

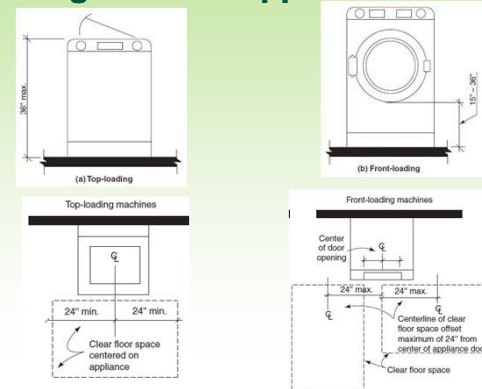


Significant Changes to the ICC A117.1 - Accessibility Standard - 2009 Edition

Workbook Page 56

90

## Washing Machines and Clothes Dryers: 611 Height of and Approach



Significant Changes to the ICC A117.1 - Accessibility Standard - 2009 Edition

Workbook Page 59

92

# Significant Changes to the ICC A117.1 - Accessibility Standard - 2009 Edition

## Washing Machines and Clothes Dryers: 611 Height of and Approach

- Top load machines require space to be centered.
- Front load machines allow a 24 inch maximum offset from center of door.
- Maximum height for front loading machine changed from 34 inches to 36 inches.



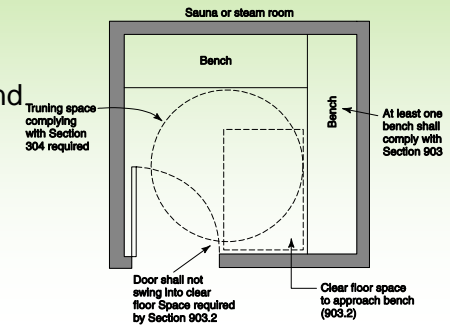
Significant Changes to the ICC A117.1 - Accessibility Standard - 2009 Edition

Workbook Page 59

93

## Saunas and Steam Rooms: 612 (New)

- Provide the technical requirements to make saunas and steam rooms accessible.



Significant Changes to the ICC A117.1 - Accessibility Standard - 2009 Edition

Workbook Page 61

95

## Washing Machines and Clothes Dryers: 611 Height of and Approach

- Type B units differ from 611:
  - Parallel approach required for top-load and forward or parallel approach accepted for front load.
  - There are no requirements for operable parts.
  - Do **not** require space be centered on equipment.



Significant Changes to the ICC A117.1 - Accessibility Standard - 2009 Edition

Workbook Page 59

94

## Saunas and Steam Rooms: 612 (New)

- References general bench requirements and prohibits door swing into clear floor space for bench access.
- Requires turning space inside room.
- Does not address whether the chair may need to be moved outside of room or how it would be done (assisted or unassisted).




Significant Changes to the ICC A117.1 - Accessibility Standard - 2009 Edition

Workbook Page 61

96



# Significant Changes to the ICC A117.1 - Accessibility Standard - 2009 Edition



## Chapter 7: Communication Elements and Features

- Signs
- Variable message signage
- Two way communication system

## Signs: 703.1 General Provisions

- Pictograms regulated only for room designations and not for items such as ISA or TTY.
- Pictograms used for other than room designation do not have to meet pictogram requirements.
- Text descriptors are not needed for many pictograms.
- Pictograms for other than room designations do not have a specified size requirement.
  - Good guidance may be to provisions for height of visual characters.




Significant Changes to the ICC A117.1 - Accessibility Standard - 2009 Edition

Workbook Page 63 99

## Signs: 703.1 General Provisions

- Depending upon the location and purpose of the sign, the standard specifies what requirements the sign must meet.
- Term “tactile” has been replaced with “raised” or “containing raised characters and braille” to clearly specify provisions for each sign.



Significant Changes to the ICC A117.1 - Accessibility Standard - 2009 Edition

Workbook Page 63

99

## Signs: 703.2.1 Visual Character Options

- The revisions provide scoping guidance related to the various types of visual characters.
- This section also serves as the introduction to a new section of visual characters that are regulated under the variable message sign (VMS) signage requirements of Section 703.7.
- The exception allows for raised and braille letters to be on two signs instead of on the same sign.



Significant Changes to the ICC A117.1 - Accessibility Standard - 2009 Edition

Workbook Page 66

100

# Significant Changes to the ICC A117.1 - Accessibility Standard - 2009 Edition

## Signs:

### 703.2.1 Visual Character Options

- Shows there are three separate types of visual characters addressed by requirements.



Significant Changes to the ICC A117.1 - Accessibility Standard - 2009 Edition

Workbook Page 66

101

## Signs:

### 703.2.4, 703.2.8 Visual Character Height and Line Spacing

- Revision was needed because signs viewed at great distances were not adequately addressed and would have required massive characters.
- Signage requirements originally developed for viewing within a room or space where someone could move forward.
- In these venues, signs must be viewable from a person's seat. Often times on opposite side of playing field.



Significant Changes to the ICC A117.1 - Accessibility Standard - 2009 Edition

Workbook Page 67

103

## Signs:

### 703.2.4, 703.2.8 Visual Character Height and Line Spacing

- An exception has been added to address the character height and line spacing required in assembly seating areas where the viewing distance to the characters is 100 feet or greater.



Significant Changes to the ICC A117.1 - Accessibility Standard - 2009 Edition

Workbook Page 66

102

## Signs:

### 703.2.4, 703.2.8 Visual Character Height and Line Spacing

- Character height of 1 inch for every 30 feet was based upon MUTCD requirements which does address viewing distances for signs.
- An exception permits reduced minimum line spacing for the fixed characters viewed at larger distances.



Significant Changes to the ICC A117.1 - Accessibility Standard - 2009 Edition

Workbook Page 67

104

# Significant Changes to the ICC A117.1 - Accessibility Standard - 2009 Edition

## Variable Message Signs: 703.7 (New)

- This section provides technical requirements for Variable Message Signs (VMS) signs, such as those found in airports displaying flight arrival or gate information, and addresses both low and high resolution signs.



Significant Changes to the ICC A117.1 - Accessibility Standard - 2009 Edition

Workbook Page 69

105

## Variable Message Signs: 703.7 (New)

- VMS provide information that is important to occupants.
- Characters classified as either high resolution or low resolution.
- High-Resolution meet general visual character requirements plus VMS protective coating, brightness and rate of change provisions.



Significant Changes to the ICC A117.1 - Accessibility Standard - 2009 Edition

Workbook Page 69

107

## Variable Message Signs: 703.7, 106.5 Definitions (New)

- variable message signs (VMS):** Electronic signs that have a message with the capacity to change by means of scrolling, streaming, or paging across a background.
- variable message sign (VMS) characters:** Characters of an electronic sign are composed of pixels in an array. High resolution VMS characters have vertical pixel counts of 16 rows or greater. Low resolution VMS characters have vertical pixel counts of 7 to 15 rows.



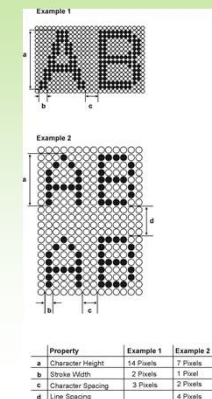
Significant Changes to the ICC A117.1 - Accessibility Standard - 2009 Edition

Workbook Page 69

106

## Variable Message Signs: 703.7 (New)

- Low-Res meet all the requirements of 703.7.
- Height of characters is greater in low resolution signs to increase legibility (See Table 703.7.4 versus Table 703.2.4).
- Low-Res requires upper case and limits character styles.



Significant Changes to the ICC A117.1 - Accessibility Standard - 2009 Edition

Workbook Page 69

108

# Significant Changes to the ICC A117.1 - Accessibility Standard - 2009 Edition

## Variable Message Signs: 703.7 (New)

- Exception in character height section reflects general VMS cannot easily work for large assembly spaces when viewing distance is over 100 feet (viewing distance is the issue).
- Preference is that message is displayed “in its entirety” but provides rate of change requirement when length exceeds capacity of the screen so it scrolls.



Significant Changes to the ICC A117.1 - Accessibility Standard - 2009 Edition

Workbook Page 69

109

## Telephone Entry System: 708.4, 105.2.7 (New)

- New reference standard for telephone entry systems, where provided.



surface mount



Significant Changes to the ICC A117.1 - Accessibility Standard - 2009 Edition

Workbook Page 74

111



## Interpretation



- Are television monitors in airports that provide flight information considered variable message signs?



Significant Changes to the ICC A117.1 - Accessibility Standard - 2009 Edition

Workbook Page 69

110

## Telephone Entry System: 708.4, 105.2.7 (New)

- DASMA standard provides criteria on location, placement, visual user directions, audible user directions, volume level, call status, controls and input devices.
- Requirements provide uniform application, enhanced system performance and consistent ease of use.
- Standard available for free at <http://www.dasma.com/pubstandards.asp>




Significant Changes to the ICC A117.1 - Accessibility Standard - 2009 Edition

Workbook Page 74

112

# Significant Changes to the ICC A117.1 - Accessibility Standard - 2009 Edition



## Chapter 8: Special Rooms and Spaces

- Assembly seating
- Kitchens
- Railroad track crossing
- Courtrooms

## Assembly Areas: 802, 106.5 Definitions (New)

- **wheelchair space:** A space for a single wheelchair and its occupant.
- **wheelchair space locations:** A space for a minimum of a single wheelchair and the associated companion seating. Wheelchair space locations can contain multiple wheelchair spaces and associated companion seating.



Significant Changes to the ICC A117.1 - Accessibility Standard - 2009 Edition

Workbook Page 75

115

## Assembly Areas: 802

- The assembly provisions have been modified to provide better guidance regarding the requirements and locations for wheelchair spaces within assembly areas.
- A consistent terminology that distinguishing between a “wheelchair space” and “wheelchair space locations.”



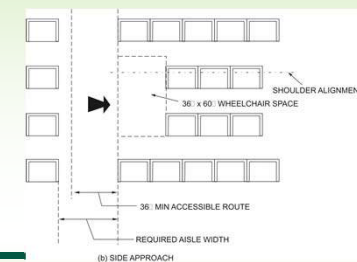
Significant Changes to the ICC A117.1 - Accessibility Standard - 2009 Edition

Workbook Page 75

114

## Assembly Areas: 802

- Approach requirements are good example of why the distinction is important. The wheelchair space must adjacent to an accessible route, but not necessarily the companion seat.



Significant Changes to the ICC A117.1 - Accessibility Standard - 2009 Edition

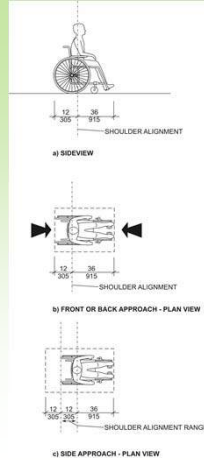
Workbook Page 75

116

# Significant Changes to the ICC A117.1 - Accessibility Standard - 2009 Edition

## Assembly Areas: 802

- Companion seating alignment requirements provides two measurements to ensure companion seat is aligned with shoulders of wheelchair space.



Significant Changes to the ICC A117.1 - Accessibility Standard - 2009 Edition

Workbook Page 75

117

## Wheelchair space location: 802.10 Dispersion



Significant Changes to the ICC A117.1 - Accessibility Standard - 2009 Edition

Workbook Page 79

119

## Assembly Areas: 802

- General technical requirements (depth, approach, need for a companion seat and line of sight) apply to a wheelchair space.
- Dispersion requirements (horizontal, distance from event and by type) will apply to wheelchair space locations.



Significant Changes to the ICC A117.1 - Accessibility Standard - 2009 Edition

Workbook Page 75

118

## Wheelchair space location: 802.10 Dispersion

- The dispersion of wheelchair space locations has been modified to eliminate some of the requirements that were difficult to apply to small venues.
- Removing requirement for horizontal separation by a minimum of 10 seats.
- Exception applies to small assembly areas with 300 or fewer seats. Previously used in any size assembly space.



Significant Changes to the ICC A117.1 - Accessibility Standard - 2009 Edition

Workbook Page 79

120

# Significant Changes to the ICC A117.1 - Accessibility Standard - 2009 Edition

## Wheelchair space location: 802.10 Dispersion

- Removing requirement of 5 intervening rows for dispersion for a variety of distances from the event.
- Standard will not provide designer with specifically required separation; therefore should be discussed with jurisdiction.



Significant Changes to the ICC A117.1 - Accessibility Standard - 2009 Edition

Workbook Page 79

121



## Interpretation



- Are wheelchair spaces incorporated into the cross aisle considered integrated?



Significant Changes to the ICC A117.1 - Accessibility Standard - 2009 Edition

Workbook Page 79

123

## Wheelchair space location: 802.10 Dispersion in movie theaters

- Spaces for projected motion pictures modified to put wheelchair space location is back 60 percent of auditorium (versus 70 percent).
- Percentage selected for consistency with DOJ agreements and consent orders.



Significant Changes to the ICC A117.1 - Accessibility Standard - 2009 Edition

Workbook Page 79

122

## Kitchens and Kitchenettes: 804 In Common Use Spaces and Accessible Units

- Changes are applicable to both kitchens and kitchenettes within public spaces (offices, churches, etc.) but also to Accessible dwelling units.
- Elimination of a 50% percentage of cabinet space for required accessible storage.
- Adequate access to cabinets is provided with requirements for access to appliances. Requirements for storage would not work with upper cabinets or very small kitchens.



Significant Changes to the ICC A117.1 - Accessibility Standard - 2009 Edition

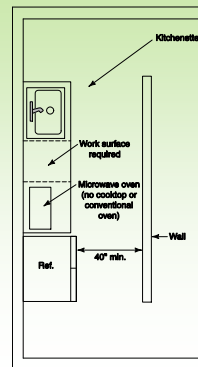
Workbook Page 84

124

# Significant Changes to the ICC A117.1 - Accessibility Standard - 2009 Edition

## Kitchens and Kitchenettes: 804 In Common Use Spaces and Accessible Units

- Requires 40 inch minimum clearance between cabinets, appliance and any walls at kitchenettes.



Significant Changes to the ICC A117.1 - Accessibility Standard - 2009 Edition

Workbook Page 84

125

## Cooktops and Ovens: 804.5.4, 804.5.5, 1003.12.5.4, 1003.12.5.5, 1004.12.2.3, 1004.12.2.4

- The revisions coordinate the cooktop and oven requirements of Chapter 8 and those of the three dwelling unit types in Chapter 10.
- Clarifies that a conventional range must meet both cooktop and oven provisions.



Significant Changes to the ICC A117.1 - Accessibility Standard - 2009 Edition

Workbook Page 88

127

## Kitchens and Kitchenettes: 804 In Common Use Spaces and Accessible Units

- Clarifies that only one accessible work surface is required in a kitchen. In common use and Accessible unit kitchens, it must be adjacent to the oven.
- No accessible work space is required in a kitchenette.
- Clarifies that if multiple sinks are provided, only one has to be accessible.
- Overlap of clear floor spaces still permitted by Section 301.2.



Significant Changes to the ICC A117.1 - Accessibility Standard - 2009 Edition

Workbook Page 84

125

## Cooktops and Ovens: 804.5.4, 804.5.5, 1003.12.5.4, 1003.12.5.5, 1004.12.2.3, 1004.12.2.4

- At a cooktop and sink with side approach, the clear floor space must be centered.
- At appliances with doors (i.e., oven, refrigerator, dishwasher, compactor) the clear floor space must be located so that the door can be opened.



Significant Changes to the ICC A117.1 - Accessibility Standard - 2009 Edition

Workbook Page 88

128



# Significant Changes to the ICC A117.1 - Accessibility Standard - 2009 Edition

## Cooktops and Ovens:

804.5.4, 804.5.5, 1003.12.5.4, 1003.12.5.5, 1004.12.2.3, 1004.12.2.4

- In common use, Accessible units and Type A units, oven controls can be at the front or side as long as you do not have to reach across burners to operate them.
- Type B units do **not** have any requirements for appliance controls.



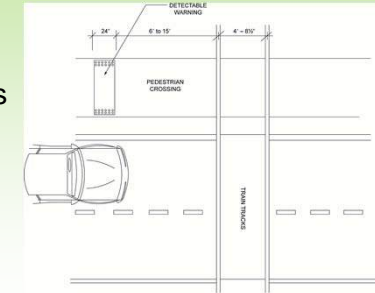
Significant Changes to the ICC A117.1 - Accessibility Standard - 2009 Edition

Workbook Page 88

129

## 805.10 Track Crossings

- Location differs to allow for design of tracks and easements (6 to 15 feet from nearest rail).



Significant Changes to the ICC A117.1 - Accessibility Standard - 2009 Edition

Workbook Page 91

131

## 805.10 Track Crossings

- Provision requires detectable warnings any time a track crosses a pedestrian way. Previously the requirement only applied to circulation paths serving a boarding platform.



Significant Changes to the ICC A117.1 - Accessibility Standard - 2009 Edition

Workbook Page 91

130

## 807 Courtrooms

- Coordinate with Section 808 of the 2010 ADA Standard and the scoping provisions for courtrooms in the IBC Section 1108.4.



Photo Courtesy of HOK



Significant Changes to the ICC A117.1 - Accessibility Standard - 2009 Edition

Workbook Page 93

132

# Significant Changes to the ICC A117.1 - Accessibility Standard - 2009 Edition

## 807 Courtrooms

- Reference to Section 802 clarifies courtroom gallery seating is dealt with the same as other assembly seating.



Significant Changes to the ICC A117.1 - Accessibility Standard - 2009 Edition

Workbook Page 93

133

## 807 Courtrooms

- Exception for jury boxes that accepts access to only one level.



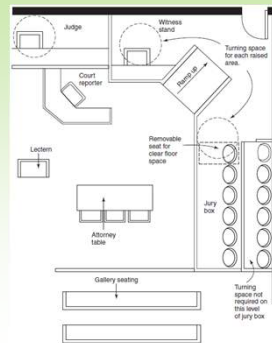
Significant Changes to the ICC A117.1 - Accessibility Standard - 2009 Edition

Workbook Page 93

135

## 807 Courtrooms

- Turning space now required for any raised or depressed area regardless of whether a ramp or lift is provided.
- Permits turning space to include knee and toe clearances under the work surfaces.



Significant Changes to the ICC A117.1 - Accessibility Standard - 2009 Edition

Workbook Page 93

134



## Chapter 9: Built-In Furnishings and Equipment

- Work surfaces
- Benches

# Significant Changes to the ICC A117.1 - Accessibility Standard - 2009 Edition

## Dining and Work Surfaces: 902 Clear Floor Space

- Two new exceptions are provided to eliminate the requirement for knee and toe space beneath small drink counters or furnishings where the element is not intended to function as a table for forward approach.



Significant Changes to the ICC A117.1 - Accessibility Standard - 2009 Edition

Workbook Page 96

137

## Dining and Work Surfaces: 902 Clear Floor Space

- Second exception used for items such as low side tables and requires a parallel-approach clear floor space and limited height.



Significant Changes to the ICC A117.1 - Accessibility Standard - 2009 Edition

Workbook Page 96

139

## Dining and Work Surfaces: 902 Clear Floor Space

- Example of elements covered: small countertop or ledge on wall in standing area of a bar or club.
- Standard imposes a 12-inch depth limit to help distinguish when the exception applies.



Significant Changes to the ICC A117.1 - Accessibility Standard - 2009 Edition

Workbook Page 96

138



## Interpretation



- What about café tables?



Significant Changes to the ICC A117.1 - Accessibility Standard - 2009 Edition

Workbook Page 96

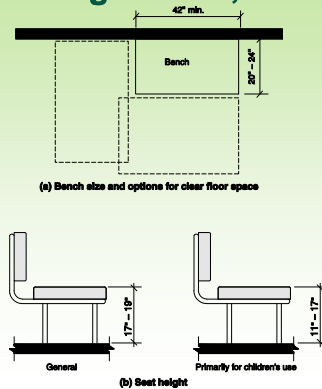
140

# Significant Changes to the ICC A117.1 - Accessibility Standard - 2009 Edition

## Benches:

### 903 In Locker Rooms, Fitting Rooms, and Dressing Rooms

- Clear floor space to access the bench is no longer required to be at the end of the bench.
- Parallel approach to the front of the bench is now permitted.



Significant Changes to the ICC A117.1 - Accessibility Standard - 2009 Edition

Workbook Page 98

141



## Chapter 10: Dwelling Units and Sleeping Units

- Accessible units
- Type A units
- Type B units
- Type C units

## Benches:

### 903 In Locker Rooms, Fitting Rooms, and Dressing Rooms

- Allows for design options and may reduce size required for dressing rooms.
- New exception provides specific height for benches for children's use.



Significant Changes to the ICC A117.1 - Accessibility Standard - 2009 Edition

Workbook Page 98

142

## Chapter 10

- The requirements for the three levels of accessibility for dwelling and sleeping units (i.e., Accessible, Type A and Type B) have been coordinated.
- The intent was to create a logical 'step down' of accessibility requirements.
- Nothing in a less accessible unit would exceed requirements in a more accessible unit.



Significant Changes to the ICC A117.1 - Accessibility Standard - 2009 Edition

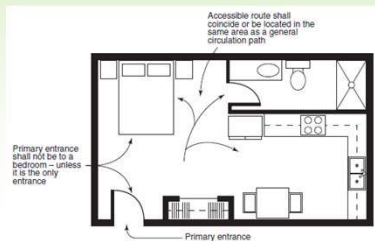
Workbook Page 100

144

# Significant Changes to the ICC A117.1 - Accessibility Standard - 2009 Edition

## Accessible Route and Unit Entrance: 1002.3, 1003.3, 1004.3

- The requirements for the accessible route's location and entry into the dwelling or sleeping unit have been revised and coordinated for the three types of units.



Significant Changes to the ICC A117.1 - Accessibility Standard - 2009 Edition

Workbook Page 105

145

## Accessible Route and Unit Entrance: 1002.3, 1003.3, 1004.3

- Exception for Type B unit addresses unfinished attics and basements:
  - Coordinates with existing Accessible and Type A language.
  - Consistent with multistory unit exception found in Fair Housing.
  - Doors to the spaces are still "user passage doorway" and door width and size requirements are still applicable.



Significant Changes to the ICC A117.1 - Accessibility Standard - 2009 Edition

Workbook Page 105

147

## Accessible Route and Unit Entrance: 1002.3, 1003.3, 1004.3

- Accessible entrance through a bedroom is permitted if it "is the only entrance."
- Created a general requirement that the accessible route coincide with the general circulation path.
- Example: Allows for the accessible route to a closet to be through a bathroom if that is the same as the general route. This is common in master suite design.



Significant Changes to the ICC A117.1 - Accessibility Standard - 2009 Edition

Workbook Page 105

146

## Accessible Route and Unit Entrance: 1002.3, 1003.3, 1004.3

- Text related to limited size exterior spaces deleted to coordinate with 2010 ADA Standard; which eliminates the turning space requirement for small exterior spaces.
- For Accessible and Type A, new exception applies to any space having a dimension less than the required maneuvering clearance on exterior side of door rather than addressing arbitrary deck size of 30 inches.



Significant Changes to the ICC A117.1 - Accessibility Standard - 2009 Edition

Workbook Page 105

148

# Significant Changes to the ICC A117.1 - Accessibility Standard - 2009 Edition

## Accessible Route and Unit Entrance: 1002.3, 1003.3, 1004.3

- Limited to “balconies” and applicable “at other than primary entry.” Not for ground floor decks.



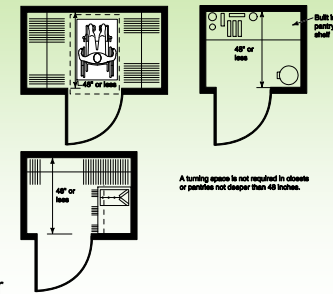
Significant Changes to the ICC A117.1 - Accessibility Standard - 2009 Edition

Workbook Page 105

149

## Turning Space: 1002.3.2, 1003.3.2

- Exception 2 - applicable to closet or pantry 48 inches or less in depth.
- 48 inch depth coordinates with clear floor space and limits potential to become trapped.
- Addressed when does a closet become a room and therefore require a clear floor space.



Significant Changes to the ICC A117.1 - Accessibility Standard - 2009 Edition

Workbook Page 108

151

## Turning Space: 1002.3.2, 1003.3.2

- Two exceptions for Accessible and Type A dwelling units exempt spaces from the turning space requirements.
- Exception 1 – non-accessible bathrooms in multi-bathroom units.
- Exception 1 consistent with 2010 ADA Standard requirement for transient lodging guest rooms and residential dwelling units.



Significant Changes to the ICC A117.1 - Accessibility Standard - 2009 Edition

Workbook Page 108

150

## Doors and Doorways: 1002.5, 1003.5, 1004.5

- Most new exceptions in Accessible and Type A clarify provisions or coordinate with other sections. They don't result in major changes.
- Non-accessible toilet and bathing rooms are not required to provide maneuvering clearances on the inside of the room.
- Where balconies are too small, the maneuvering clearance is not required on the outside.



Significant Changes to the ICC A117.1 - Accessibility Standard - 2009 Edition

Workbook Page 110

152

# Significant Changes to the ICC A117.1 - Accessibility Standard - 2009 Edition

## Doors and Doorways: 1002.5, 1003.5, 1004.5

- Doors in a series within the unit, are not required to provide the turning circle. Entrapment issues are not the same within an individual unit as the are at a building entrance vestibule.
- Storm or screen doors and communicating doors between guestrooms are not considered doors in series.



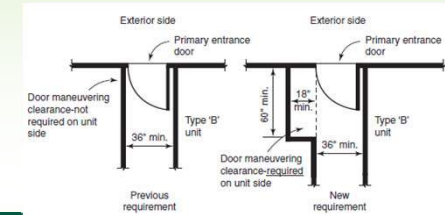
Significant Changes to the ICC A117.1 - Accessibility Standard - 2009 Edition

Workbook Page 110

153

## Doors and Doorways: 1002.5, 1003.5, 1004.5

- Door-maneuvering clearances now required on inside of primary entry door in Type B units.
  - Without maneuvering space quick access to door during an emergency may be affected.
  - A117.1 will be more restrictive than Fair Housing.

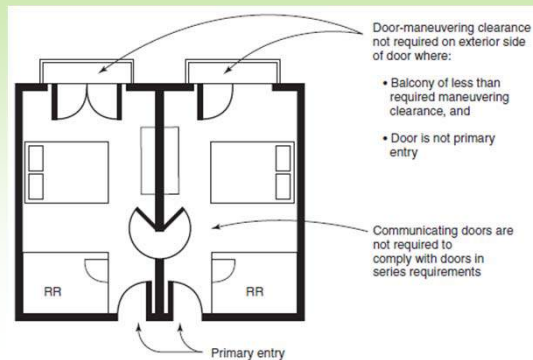


Significant Changes to the ICC A117.1 - Accessibility Standard - 2009 Edition

Workbook Page 110

155

## Doors and Doorways: 1002.5, 1003.5, 1004.5



Significant Changes to the ICC A117.1 - Accessibility Standard - 2009 Edition

Workbook Page 110

154

## Operable Parts: 1002.9, 1003.9, 1004.9 Electrical panelboards

- Electrical panelboards have been added under the operable parts section.
- Does not require the panelboards to be within the unit just accessible **if** installed in unit and available for operation by occupants.
- A clear floor space and reach range height applies to the panelboards (but not force requirement).
- Other reset buttons and shut-offs switches are not regulated.



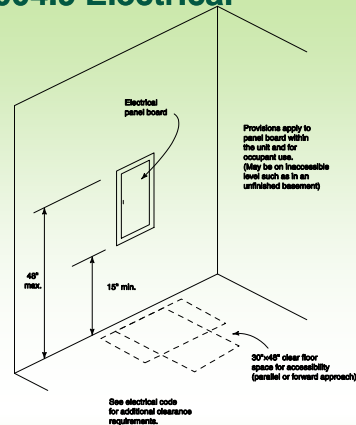
Significant Changes to the ICC A117.1 - Accessibility Standard - 2009 Edition

Workbook Page 114

156

# Significant Changes to the ICC A117.1 - Accessibility Standard - 2009 Edition

## Operable Parts: 1002.9, 1003.9, 1004.9 Electrical panelboards



Significant Changes to the ICC A117.1 - Accessibility Standard - 2009 Edition

Workbook Page 114

157

## Operable Parts: 1004.9 Receptacle outlets

- Type B units –
  - Exception 10 addresses that FHA allows 36" high cabinets with standard counter depth (25-1/2"). Both dimensions are beyond typical reach range limits.
  - Exception 9 provides exemption for redundant controls.



Significant Changes to the ICC A117.1 - Accessibility Standard - 2009 Edition

Workbook Page 114

159

## Operable Parts: 1002.9, 1003.9, 1004.9 Receptacle outlets

- Exception 2 simplifies exception for electrical outlets over counters in kitchens – when two are provided over one length of counter, only one is required to be accessible.



Significant Changes to the ICC A117.1 - Accessibility Standard - 2009 Edition

Workbook Page 114

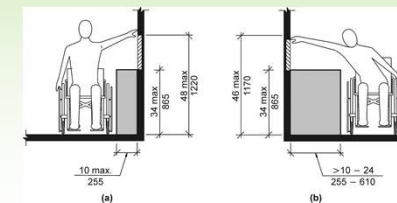
158



## Interpretation



- What about electrical outlets and switches in Accessible and Type A kitchens?



Significant Changes to the ICC A117.1 - Accessibility Standard - 2009 Edition

Workbook Page 114

160



# Significant Changes to the ICC A117.1 - Accessibility Standard - 2009 Edition

## Grab Bars and Shower Seats: 1002.11, 1003.11, 1004.11 Reinforcement

- Exceptions for Type A and Type B dwelling units moved from Chapter 6 to Chapter 10.
- Relocated reinforcement requirements to front of general bathroom sections clarifies blocking provisions are applicable to all toilet and bathrooms within the individual units.
- Requirement for reinforcement in non-accessible bathrooms within Accessible and Type A units is consistent with those of Fair Housing and Type B units.



Significant Changes to the ICC A117.1 - Accessibility Standard - 2009 Edition

Workbook Page 119

161

## Grab Bars: 1004.11 Swing up grab bars

- Type B units –
  - Relocates swing-up grab bar provisions from Chapter 6 to the Type B unit section.
  - Swing-up grab bar requirements modified to address the location of the bars and direction of approach to the water closet.

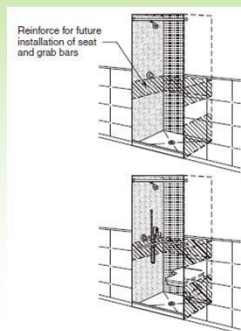
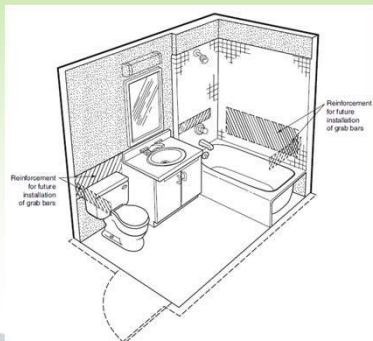


Significant Changes to the ICC A117.1 - Accessibility Standard - 2009 Edition

Workbook Page 119

163

## Grab Bars and Shower Seats: 1002.11, 1003.11, 1004.11 Reinforcement



Significant Changes to the ICC A117.1 - Accessibility Standard - 2009 Edition

Workbook Page 119

162

## Toilet and Bathing Facilities: 1002.11.2, 1003.11.2 In a Multi-Bathroom Unit

- Accessible units and Type A are permitted to have only one accessible bathroom.
- Either a bathtub or a shower can serve as the accessible bathing facility.



Significant Changes to the ICC A117.1 - Accessibility Standard - 2009 Edition

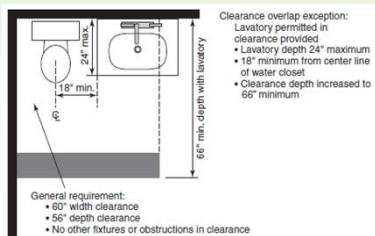
Workbook Page 123

164

# Significant Changes to the ICC A117.1 - Accessibility Standard - 2009 Edition

## Clearance Overlap: 1003.11.2.4.4 Toilet and Bathing Facilities

- Type A units - The exception is revised so the depth of the lavatory adjacent to the water closet is limited. Previously the depth of the obstruction was not addressed.



Significant Changes to the ICC A117.1 - Accessibility Standard - 2009 Edition

Workbook Page 133

165

## Bathing Fixtures: 1003.11.2.5, 1004.11.3.1.3, 1004.11.3.2.3

- Type A unit – where both bathtub and shower are provided in the same bathroom, only one is required to be accessible.
- Accessible unit - Similar language is found in 1002.11.2.



Significant Changes to the ICC A117.1 - Accessibility Standard - 2009 Edition

Workbook Page 133

167

## Clearance Overlap: 1003.11.2.4.4 Toilet and Bathing Facilities

- 24-inch maximum depth selected to match Type B units where a vanity or other obstruction overlaps the floor space for the water closet.
- Helps keep Type A unit consistent so it will be allowed as an alternate for Type B unit.



Significant Changes to the ICC A117.1 - Accessibility Standard - 2009 Edition

Workbook Page 133

165

## Bathing Fixtures: 1003.11.2.5, 1004.11.3.1.3, 1004.11.3.2.3

- Type B units –
  - Option A - If both tub and shower are provided both elements to be accessible (uses the word “and” as connection)
  - Option B - similar to Accessible and Type A bathrooms
  - Option A requirement that both the tub and shower be accessible is illogical when compared to scoping for the other bathrooms (but it matches HUD’s interpretation)



Significant Changes to the ICC A117.1 - Accessibility Standard - 2009 Edition

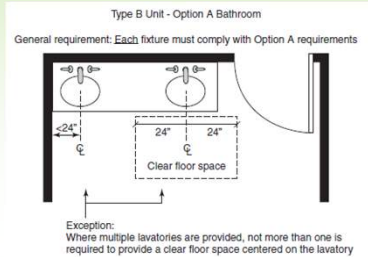
Workbook Page 135

168

# Significant Changes to the ICC A117.1 - Accessibility Standard - 2009 Edition

## Multiple Lavatories: 1004.11.3.1 In Type B Unit, Option A Bathrooms

- A new exception clearly addresses that only a single lavatory needs to be accessible within the same bathroom in a Type B unit, Option A bathroom.



Significant Changes to the ICC A117.1 - Accessibility Standard - 2009 Edition

Workbook Page 139

169

## Multiple Lavatories: 1004.11.3.1 In Type B Unit, Option A Bathrooms

- Clarifies that in bathroom with multiple lavatories that only one is required to be accessible.
- Continues committee's effort that helps clarify only one of each type of fixture is required to be accessible in all options.
- Helps where one lavatory is pushed closer than 24-inches to a wall and would not allow centering of clear floor space.
- May allow a second lavatory that otherwise would not be installed where space is limited.

Significant Changes to the ICC A117.1 - Accessibility Standard - 2009 Edition

Workbook Page 139

171

## Multiple Lavatories: 1004.11.3.1 In Type B Unit, Option A Bathrooms

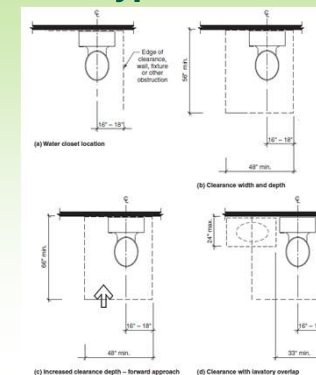


Significant Changes to the ICC A117.1 - Accessibility Standard - 2009 Edition

Workbook Page 139

170

## Water Closet Clearance: 1004.11.3.1.2 In Type B Units



Significant Changes to the ICC A117.1 - Accessibility Standard - 2009 Edition

Workbook Page 141

172

# Significant Changes to the ICC A117.1 - Accessibility Standard - 2009 Edition

## Water Closet Clearance: 1004.11.3.1.2 In Type B Units

- This change clarified and coordinated the maneuvering clearances around the water closets.
- Provisions are in smaller, easier-understand sections that are addressing a single issue.
- Essentially editorial rewrite with provisions more concise and addressing requirements by focusing on the clearances.
- Allows Type B units to follow format for Type A units and Chapter 6.



Significant Changes to the ICC A117.1 - Accessibility Standard - 2009 Edition

Workbook Page 141

173

## Water Closet Clearance: 1004.11.3.1.2 In Type B Units

- Clearance overlap wording “vanity or other obstruction” will allow a short wall or any other type of obstruction versus being limited to vanity and lavatories.
- Obstruction limited to 24-inch maximum depth to match typical vanity and FHA provisions.



Significant Changes to the ICC A117.1 - Accessibility Standard - 2009 Edition

Workbook Page 141

175

## Water Closet Clearance: 1004.11.3.1.2 In Type B Units

- Allows a range of 16 to 18 inches from centerline of water closet to a wall or to a bathtub or lavatory.
- Provides a tolerance for situations where water closet is not located at exactly 18 inches.
- 18 inch minimum still is applicable if the water closet has a fixture on each side.



Significant Changes to the ICC A117.1 - Accessibility Standard - 2009 Edition

Workbook Page 141

174

## Water Closet Clearance: 1004.11.3.1.2 In Type B Units

- Requirements related to the parallel- or forward-approach can be found by looking at the exception which references the Type A unit requirements.
- Option did not get eliminated though it may appear that way if only looking at Type B text.



Significant Changes to the ICC A117.1 - Accessibility Standard - 2009 Edition

Workbook Page 141

176

# Significant Changes to the ICC A117.1 - Accessibility Standard - 2009 Edition

## Kitchens and Kitchenettes: 1002.12, 1003.12, 1004.12

- Clarifies that some of the “kitchen” requirements will also apply to kitchenettes.
- The change will affect suites in facilities such as assisted living, dormitories, efficiency apartments, and in hotels that include a kitchenette.



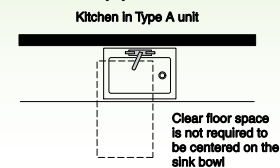
Significant Changes to the ICC A117.1 - Accessibility Standard - 2009 Edition

Workbook Page 125

177

## Kitchen Sinks: 1003.12.4.1 Clear Floor Space

- Deletes the requirement for the clear floor space to be centered on the kitchen sink.
- A consistent format is provided for the future removal of base cabinets to allow a more accessible option of a forward approach to sinks or lavatories.



Significant Changes to the ICC A117.1 - Accessibility Standard - 2009 Edition

Workbook Page 138

179

## Kitchens and Kitchenettes: 1002.12, 1003.12, 1004.12

- Kitchenettes are **not** required to have an accessible work surface.
- Kitchenettes are permitted to provide a side approach to sinks.



Significant Changes to the ICC A117.1 - Accessibility Standard - 2009 Edition

Workbook Page 125

178

## Windows: 1002.13, 1003.13

- Accessible and Type A units –
  - New scoping applies to operable windows required to provide natural ventilation or emergency escape and rescue.
  - Previously applied “where operable windows are provided” and to “at least one window.”
- Type B units –
  - No window requirements.



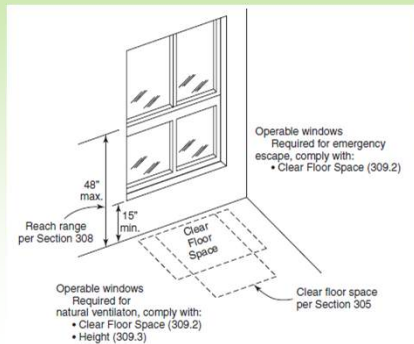
Significant Changes to the ICC A117.1 - Accessibility Standard - 2009 Edition

Workbook Page 127

180

# Significant Changes to the ICC A117.1 - Accessibility Standard - 2009 Edition

## Windows: 1002.13, 1003.13



Significant Changes to the ICC A117.1 - Accessibility Standard - 2009 Edition

Workbook Page 127

181

## Storage Facilities: 1002.14, 1003.12.5, 1003.14

- Primarily this is a companion change to the revision in Section 804.5 eliminating 50% kitchen cabinet requirements.
- Accessible and Type A units - Eliminates requirement for the kitchen cabinets.
- Type B units – There are not storage requirements, including kitchen cabinets.



Significant Changes to the ICC A117.1 - Accessibility Standard - 2009 Edition

Workbook Page 129

183

## Windows: 1002.13, 1003.13

- Emergency escape windows require a clear floor space.
- Windows required for natural ventilation requires clear floor space and the operable parts to be within reach range.
- Operable parts and opening force do **not** have to meet the 5 lbs. force requirements.



Significant Changes to the ICC A117.1 - Accessibility Standard - 2009 Edition

Workbook Page 127

182

## Storage Facilities: 1002.14, 1003.12.5, 1003.14

- Recognition that upper kitchen cabinets are extremely difficult to make accessible.
- Being able to move in the kitchen (via appliance clearance requirements and width between counters) will provide access to most base cabinets, drawers and counter storage.



Significant Changes to the ICC A117.1 - Accessibility Standard - 2009 Edition

Workbook Page 129

184

# Significant Changes to the ICC A117.1 - Accessibility Standard - 2009 Edition

## Storage Facilities: 1002.14, 1003.12.5, 1003.14

- Storage facilities, other than those in kitchen cabinets modified so that “at least one of each type” is made accessible.



Photo Courtesy of United Spinal Association



Significant Changes to the ICC A117.1 - Accessibility Standard - 2009 Edition

Workbook Page 129

185

## Access to Beds: 1002.15 In Accessible Units (New)

- Clear floor space requirements coordinate with transient lodging guestroom provisions of ADA & ABA AG and are similar to Appendix E of the IBC.
- Scoping of “In at least one sleeping area” is important and is similar to toilet and bathing requirement where “at least one” within the unit is regulated.



Significant Changes to the ICC A117.1 - Accessibility Standard - 2009 Edition

Workbook Page 131

187

## Access to Beds: 1002.15 In Accessible Units (New)

- Provisions address the scoping, clear floor space around the bed and require an open bed frame to permit the use of a lift.



Significant Changes to the ICC A117.1 - Accessibility Standard - 2009 Edition

Workbook Page 131

186

## Access to Beds: 1002.15 In Accessible Units (New)

- “A minimum of five percent” would apply in barracks or large dorm with beds in a single room or area. (If more than 20 beds more than one of them is regulated.)
- Open frame allows use of bed lift such as Hoyer lift.
- Should make open frame bed the one served by the clear floor space.



Significant Changes to the ICC A117.1 - Accessibility Standard - 2009 Edition

Workbook Page 131

188

# Significant Changes to the ICC A117.1 - Accessibility Standard - 2009 Edition

## Type C (Visitable) Units: 1005 (New)

- Provides technical requirements for dwelling units that are not regulated by Fair Housing such as single family homes and townhouses.
- Jurisdiction needs to specify scoping (see 201 and 202).



Significant Changes to the ICC A117.1 - Accessibility Standard - 2009 Edition

Workbook Page 145

189

## Type C (Visitable) Units: 1005 (New)

- Be able to get to one entrance without steps – front, back or through the garage.
- Enough space for a wheelchair to move throughout the ground level.
- A living space on the ground floor.
- A toilet room on the ground floor.
- Access to most lighting controls and receptacles.
- Access to food prep area **if** it is located on the ground floor.



Significant Changes to the ICC A117.1 - Accessibility Standard - 2009 Edition

Workbook Page 145

191

## Type C (Visitable) Units: 1005 (New)

- The intent is so that the homes will both accommodate visitors with disabilities and promote the aging in place concept so people may enjoy their homes without requiring major modifications when they, family or friends face short- or long-term mobility constraints.



Significant Changes to the ICC A117.1 - Accessibility Standard - 2009 Edition

Workbook Page 145

190



## Chapter 11: Recreational Facilities

- Recreational facilities



# Significant Changes to the ICC A117.1 - Accessibility Standard - 2009 Edition

## Chapter 11 – Recreational Facilities

- Adds a new chapter into the standard to provide the technical (how to) requirements for making sports and recreational facilities accessible.
- Scoping (what, where and how many) found in the *International Building Code (IBC)*.



Significant Changes to the ICC A117.1 - Accessibility Standard - 2009 Edition

Workbook Page 149

193

## Intent

- Primary idea is get people at least a route to a recreational facility.
- Participation dependent on personal abilities.
- It is **not** the intent to change the nature of the game.



Significant Changes to the ICC A117.1 - Accessibility Standard - 2009 Edition

Workbook Page 149

195

## Chapter 11 – Recreational Facilities

- Includes provisions for:
  - Amusement rides
  - Boating and fishing piers
  - Exercise machines
  - Golf and miniature golf
  - Playgrounds
  - Pools
  - Shooting facilities



Significant Changes to the ICC A117.1 - Accessibility Standard - 2009 Edition

Workbook Page 149

194

## Definitions: 106.5

- Amusement attractions
- Amusement ride
- Amusement ride seat
- Area of sports activity
- Boarding pier
- Boat launch ramp
- Boat slip
- Catch pool
- Elevated play components
- Gangway
- Golf car passage
- Ground level play components
- Play area
- Play components
- Soft contained play structure
- Teeing ground
- Transfer devices
- Use Zone



Significant Changes to the ICC A117.1 - Accessibility Standard - 2009 Edition

Workbook Page 149

196

# Significant Changes to the ICC A117.1 - Accessibility Standard - 2009 Edition

## Definitions: 106.5

- **Area of sports activity:** That portion of a room or space where the play or practice of a sport occurs.



Significant Changes to the ICC A117.1 - Accessibility Standard - 2009 Edition

Workbook Page 149

197

## 1101.2.2 Area of sports activity



Significant Changes to the ICC A117.1 - Accessibility Standard - 2009 Edition

Workbook Page 149

199

## General exceptions: 1101.2.1

- Refereeing stands
- Animal containment
- Raised boxing rings
- Percentage of Bowling lanes
- Others discussed under specific topics



Significant Changes to the ICC A117.1 - Accessibility Standard - 2009 Edition

Workbook Page 149

198

## Team and player areas

- Seating
- Locker rooms



Significant Changes to the ICC A117.1 - Accessibility Standard - 2009 Edition

Workbook Page 149

200

# Significant Changes to the ICC A117.1 - Accessibility Standard - 2009 Edition

## 1102 Amusement Rides

- Technical criteria for amusement rides that move a person through a fixed course for the purpose of amusement.



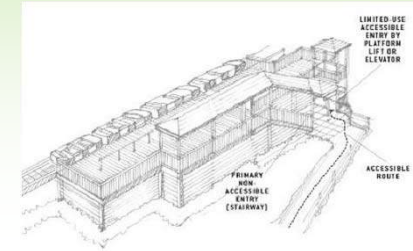
Significant Changes to the ICC A117.1 - Accessibility Standard - 2009 Edition

Workbook Page 153

201

## 1102 Amusement Rides

- Important to distinguish requirements that apply to the building or facility that serves the ride and those that apply to the ride itself.



Significant Changes to the ICC A117.1 - Accessibility Standard - 2009 Edition

Workbook Page 153

203

## 1102 Amusement Rides

### ▪ Exceptions:

- Mobile/portable rides
- Operated by the rider
- Primarily for children
- Rides that do not provide seats



Significant Changes to the ICC A117.1 - Accessibility Standard - 2009 Edition

Workbook Page 153

202

## 1102 Amusement Rides

### ▪ Options:

- Moving onto a ride in your wheelchair.
- Transfer onto a ride seat.



Significant Changes to the ICC A117.1 - Accessibility Standard - 2009 Edition

Workbook Page 153

204

# Significant Changes to the ICC A117.1 - Accessibility Standard - 2009 Edition

## 1103 Recreational Boating Facilities

- Boat slips
- Boarding piers at boat launches
- **Not** intended to apply to passenger vessel



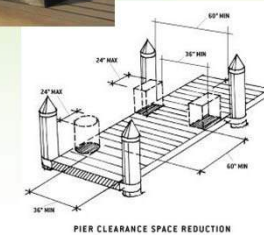
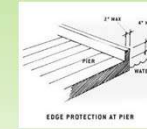
Significant Changes to the ICC A117.1 - Accessibility Standard - 2009 Edition

Workbook Page 157

205

## 1103 Recreational Boating Facilities

- Clearances
- Obstructions
- Edges
- Cleats



Significant Changes to the ICC A117.1 - Accessibility Standard - 2009 Edition

Workbook Page 157

207

## 1103 Recreational Boating Facilities

- Address the dynamic interface between the land and the water for fixed and floating facilities.
- Vertical variations caused by changes in levels due to tides or water level.
- Accessible gangways are **not** required to be longer than 80 feet.



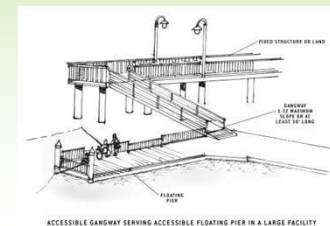
Significant Changes to the ICC A117.1 - Accessibility Standard - 2009 Edition

Workbook Page 157

206

## 1105 Fishing Piers and Platforms

- Routes similar to boating in Section 1103.



Significant Changes to the ICC A117.1 - Accessibility Standard - 2009 Edition

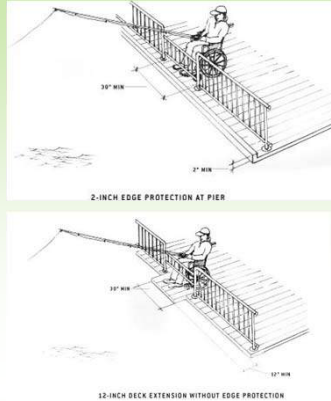
Workbook Page 157

208

# Significant Changes to the ICC A117.1 - Accessibility Standard - 2009 Edition

## 1105 Fishing Piers and Platforms

- Where barriers are provided:
  - A 30" wide portion must be 34" high or lower to allow fishing over the rail.
  - Edge protection or an extension must be provided to prevent wheels or mobility aids from slipping over the edge.



Significant Changes to the ICC A117.1 - Accessibility Standard - 2009 Edition

Workbook Page 157

209

## 1104 Exercise Machines and Equipment

- Requires an accessible route within spaces with exercise equipment.
- Clear floor space adjacent to one of each type of equipment.
- Not** required for equipment to be modified.



Significant Changes to the ICC A117.1 - Accessibility Standard - 2009 Edition

Workbook Page 151

211

## 1105 Fishing Piers and Platforms

- Where guards are required, the top rail is not required to be lowered.
- Barriers are not required, but edge protection would be suggested.



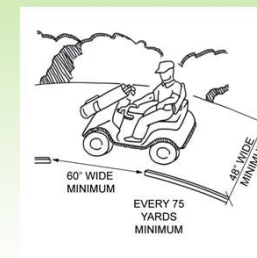
Significant Changes to the ICC A117.1 - Accessibility Standard - 2009 Edition

Workbook Page 157

210

## 1106 Golf Facilities

- An accessible route throughout a golf course.
- Option to use a golf cart instead of a wheelchair or scooter.



Significant Changes to the ICC A117.1 - Accessibility Standard - 2009 Edition

Workbook Page 161

212

# Significant Changes to the ICC A117.1 - Accessibility Standard - 2009 Edition

## 1106 Golf Facilities



- Cart rental
- Bag drop off
- Driving range
- Practice putting green



Significant Changes to the ICC A117.1 - Accessibility Standard - 2009 Edition

Workbook Page 161

213

## 1107 Miniature Golf Facilities

- Half of the holes on miniature golf course must be accessible.
- The sequence can have one break.



Significant Changes to the ICC A117.1 - Accessibility Standard - 2009 Edition

Workbook Page 161

215

## 1106 Golf Facilities



- Putting green
- Tee grounds
- Weather shelter



WEATHER SHELTER



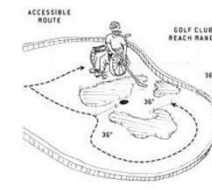
Significant Changes to the ICC A117.1 - Accessibility Standard - 2009 Edition

Workbook Page 161

214

## 1107 Miniature Golf Facilities

- Allows for curbs.
- Some exceptions are only applicable on the hole and not to the general circulation route.



EXAMPLES OF GOLF CLUB REACH RANGES ON PLAYING SURFACE



Significant Changes to the ICC A117.1 - Accessibility Standard - 2009 Edition

Workbook Page 161

216

# Significant Changes to the ICC A117.1 - Accessibility Standard - 2009 Edition

## 1108 Play Areas

- Required in facilities such as those at schools, parks, restaurants, malls and day care facilities.
- Exception for play equipment for a private home.
- Portions must be on an accessible route, or have a transfer surface.



Significant Changes to the ICC A117.1 - Accessibility Standard - 2009 Edition

Workbook Page 164

217

## 1108 Play Areas

- Ground level play components



Significant Changes to the ICC A117.1 - Accessibility Standard - 2009 Edition

Workbook Page 164

219

## 1108 Play Areas

- Soft contain play structures
- Play ground equipment at pools and water parks



Significant Changes to the ICC A117.1 - Accessibility Standard - 2009 Edition

Workbook Page 164

218

## 1108 Play Areas

- Elevated play components



Significant Changes to the ICC A117.1 - Accessibility Standard - 2009 Edition

Workbook Page 164

220

# Significant Changes to the ICC A117.1 - Accessibility Standard - 2009 Edition

## 1108 Play Areas

- Accessible routes
- Ramp access
- Transfer systems



Significant Changes to the ICC A117.1 - Accessibility Standard - 2009 Edition

Workbook Page 164

221

## 1109 Swimming Pools, Wading Pools, Hot Tubs and Spas

- **Exceptions:**
  - Water slides
  - Diving Boards
  - Catch pools
  - Lifeguard stations



Significant Changes to the ICC A117.1 - Accessibility Standard - 2009 Edition

Workbook Page 168

223

## 1109 Swimming Pools, Wading Pools, Hot Tubs and Spas



Significant Changes to the ICC A117.1 - Accessibility Standard - 2009 Edition

Workbook Page 168

222

## 1109 Swimming Pools, Wading Pools, Hot Tubs and Spas

- Specifies number and means of entry points that must be accessible.
- All pools require at least one access point. Larger pools (>300 ft of pool wall) need two.
- Allowances for types with one access point such as lazy rivers or wave action pools.
- “At least one” means of entry must be either pool lift or ramp/sloped entry.



Significant Changes to the ICC A117.1 - Accessibility Standard - 2009 Edition

Workbook Page 168

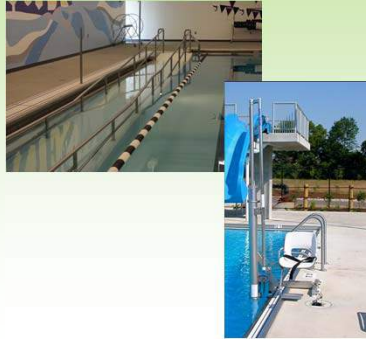
224



# Significant Changes to the ICC A117.1 - Accessibility Standard - 2009 Edition

## 1109 Swimming Pools, Wading Pools, Hot Tubs and Spas

- Types of entry:
  - Ramps
  - Sloped entry
  - Pool lift



Significant Changes to the ICC A117.1 - Accessibility Standard - 2009 Edition

Workbook Page 168

225

## 1109 Swimming Pools, Wading Pools, Hot Tubs and Spas

- Supporting areas accessible:
  - Lockers
  - Bathrooms
  - Locker rooms
  - Dressing areas



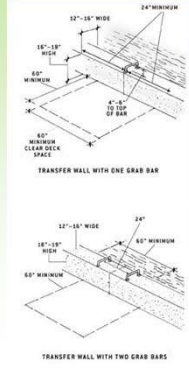
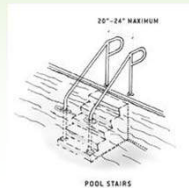
Significant Changes to the ICC A117.1 - Accessibility Standard - 2009 Edition

Workbook Page 168

227

## 1109 Swimming Pools, Wading Pools, Hot Tubs and Spas

- Types of entry:
  - Transfer system
  - Pool stairs
  - Transfer walls



Significant Changes to the ICC A117.1 - Accessibility Standard - 2009 Edition

Workbook Page 168

226

## 1109 Swimming Pools, Wading Pools, Hot Tubs and Spas

- Supporting areas accessible:
  - Concessions
  - Viewing areas



Significant Changes to the ICC A117.1 - Accessibility Standard - 2009 Edition

Workbook Page 168

228

# Significant Changes to the ICC A117.1 - Accessibility Standard - 2009 Edition

**DISCUSSION**

## Interpretation

- What should the requirements be for bars?
- Water activities?
- Should water chairs be required?



Significant Changes to the ICC A117.1 - Accessibility Standard - 2009 Edition

Workbook Page 168 229

**DISCUSSION**

## Interpretation

- What should happen for elevated shooting facilities?



Significant Changes to the ICC A117.1 - Accessibility Standard - 2009 Edition

231

## 1110 Shooting Facilities with Firing Positions

- Criteria for accessible firing positions within shooting ranges.



Significant Changes to the ICC A117.1 - Accessibility Standard - 2009 Edition

230

## Coordination efforts

- The recreational technical criteria in the ICC A117.1 standard is coordinated with the 2010 ADA Standard for Accessible Design.
- For technical guidance material on recreation facilities from the U.S. Access Board, visit <http://www.access-board.gov/recreation/guides/index.htm>.

Significant Changes to the ICC A117.1 - Accessibility Standard - 2009 Edition

232

# Significant Changes to the ICC A117.1 - Accessibility Standard - 2009 Edition

QUESTION & ANSWER

## Questions?



Significant Changes to the ICC A117.1 - Accessibility Standard - 2009 Edition 233

*International Code Council is a Registered Provider with The American Institute of Architects Continuing Education Systems. Credit earned on completion of this program will be reported to CES Records for AIA members. Certificates of Completion for non-AIA members are available on request.*

This program is registered with the AIA/CES for continuing professional education. As such, it does not include content that may be deemed or construed to be an approval or endorsement by the AIA of any material of construction or any method or manner of handling, using, distributing, or dealing in any material or product. Questions related to specific materials, methods, and services will be addressed at the conclusion of this presentation.

Significant Changes to the A117.1 Accessibility Standard – 2009 Edition  
Significant Changes to the ICC A117.1 - Accessibility Standard - 2009 Edition



## Thank you for participating

To schedule a seminar, contact:

The ICC Training & Education Department  
1-888-ICC-SAFE (422-7233) Ext. 33818

or

E-mail: [icctraining@iccsafe.org](mailto:icctraining@iccsafe.org)



2015 Template

234

## Copyright Materials

This presentation is protected by US and International Copyright laws. Reproduction, distribution, display and use of the presentation without written permission of the speaker is prohibited.

© International Code Council 2012



Significant Changes to the ICC A117.1 - Accessibility Standard - 2009 Edition

236