

COMMUNITY

GOVERNING BOARD

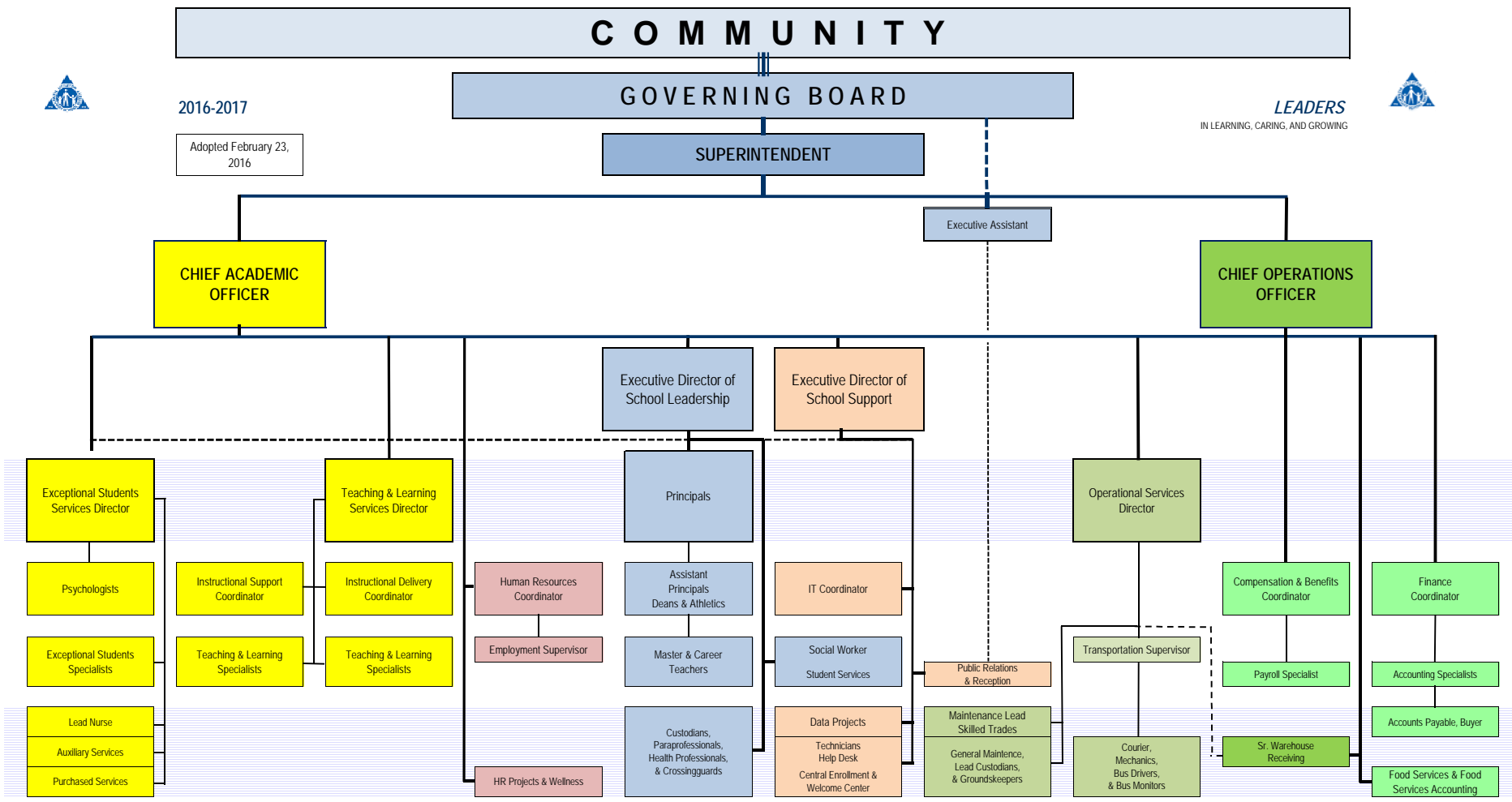
SUPERINTENDENT

2016-2017

Adopted February 23, 2016

LEADERS

IN LEARNING, CARING, AND GROWING



Guiding Principles: Every Student a Learner; Safe and Orderly Environment; Families as Partners; Competent, Dedicated and Caring Staff; A Meaningfully Involved Community; and A Highly Effective Organization