



WELCOME to W.Y.A.M.S.

Preparing for Success in Middle School

Program Agenda

- Welcome and Introductions
- Academic Programming for 6th Grade
- Supports for Success
- Tour of Facility
- Q & A Opportunity



6th Grade Courses of Study “CORE COURSES”



ENGLISH–LANGUAGE ARTS 6 (ELA)

- ▶ Year–long
- ▶ Daily Extended Instructional Period (77 minutes)

MATH 6

- ▶ Year–long
- ▶ Daily Extended Instructional Period (77 minutes)

SCIENCE 6

- ▶ Semester–long
- ▶ Daily Extended Instructional Period (77 minutes)

CULTURAL GEOGRAPHY 6

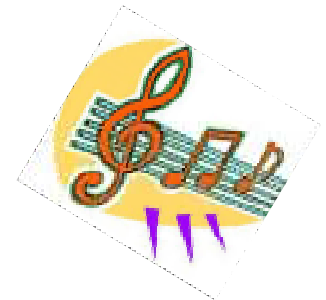
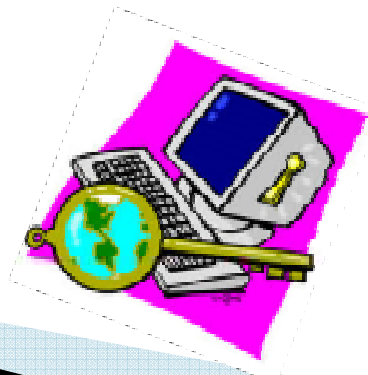
- ▶ Semester–long
- ▶ Daily Extended Instructional Period (77 minutes)

6th Grade Courses of Study “EXPLORATORY COURSES”

- ▶ ART
- ▶ FAMILY CONSUMER SCIENCE
- ▶ MUSIC
- ▶ COMPUTER EDUCATION

Marking Period–long (45 days)

37 minute instructional periods each day



6th Grade Courses of Study “PHYSICAL EDUCATION & HEALTH” “ADVISORY”

Year-long, every other day (Odds or Evens)
37 minute instructional period

Example: Days 1,3,5 = PE/Health
Days 2,4,6 = Advisory



6th Grade Courses of Study “ASSESSMENT & GRADE REPORTING”

- ▶ Year-long, Cumulative Grading
- ▶ Standard-Based Unit “Construction” = 90% of Final Grade
- ▶ Habits & Behaviors = 10% of Final Grade
- ▶ Scale
 - 92% or better = Advanced
 - 80% or better = Proficient
 - 70% or better = Basic
 - 69% or less = Below Basic
- ▶ Secure On-line Access



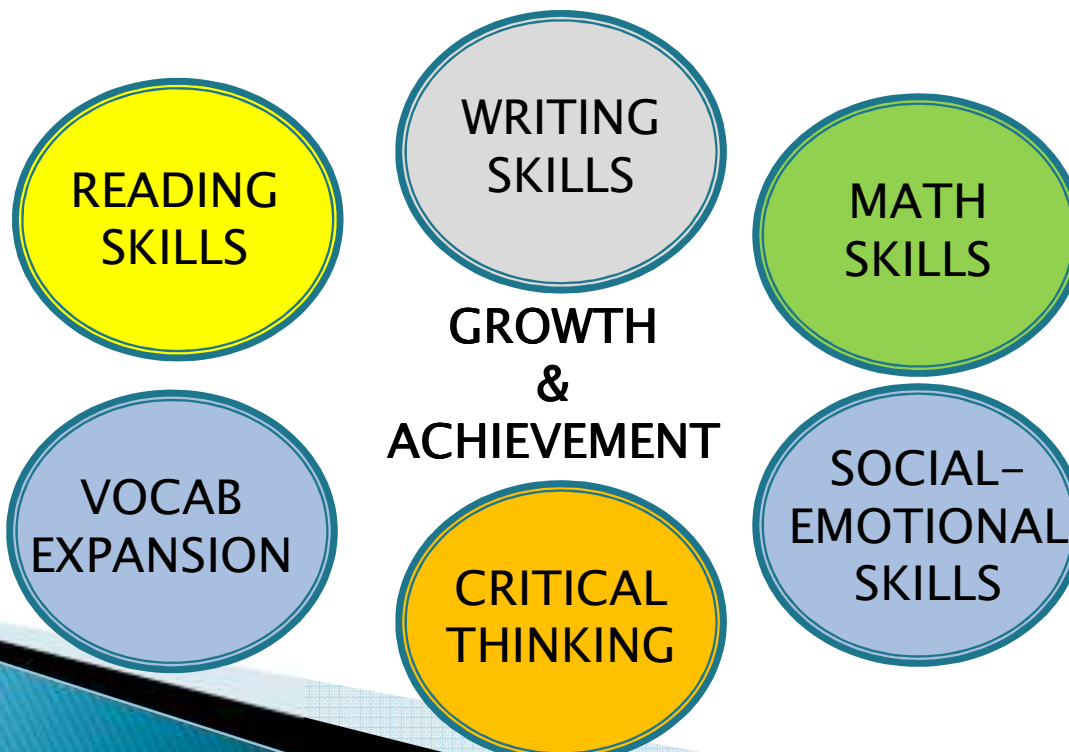
Supports for Success “ADVISORY”

- ▶ NEW PROGRAM for 2014–15
- ▶ Individual Conferencing with teacher–advisor
 - Student Data & Goals
 - Student Grades
 - Student Behavior & Emotions
- ▶ Career Exploration
- ▶ Character Development
- ▶ Bullying Prevention and Peer Relationships



Supports for Success “W.I.N. Intervention”

- ▶ 8 week workshops
- ▶ 30 minutes each day
- ▶ Data Driven Prescriptions



Supports for Success

“S.O.a.P.”

- ▶ Scholastic Organization and Practice
- ▶ Final 30 minutes of each day
- ▶ Small group remediation
- ▶ Individual Tutoring
- ▶ Re-assessment opportunities
- ▶ Organizing materials/locker
- ▶ Beginning assignments
- ▶ NOTE: Band and Chorus Students



Supports for Success “Extended Supports”

- ▶ Homework Clinic
- ▶ Owed Work Sessions
- ▶ Guidance Services
- ▶ Student Assistance Programming



Typical 6th Grade Day

PERIOD 1–2: CORE COURSE

PERIOD 3: W.I.N. Intervention

PERIOD 4–5: CORE COURSE

PERIOD 6: LUNCH

PERIOD 7–8: CORE COURSE

PERIOD 9: EXPLORATORY or PE/HEALTH or ADVISORY

PERIOD 10: EXPLORATORY or PE/HEALTH or ADVISORY

PERIOD 11: S.O.a.P (Scholastic Organization & Practice)

6th Grade Success

“Mapping Out the Rapids”

- ▶ Emotional Roller Coaster
- ▶ Range of the Strange
- ▶ Social Drama
- ▶ Hitting the Wall



6th Grade Success

“A STUDENT’S ROLE”

- ▶ Regular Attendance
- ▶ Assignment Completion
- ▶ Engagement and Self-Advocacy
- ▶ Stay Organized
- ▶ Avoid Social Drama
- ▶ Responsible Reporting



6th Grade Success

“A PARENT’S ROLE”

- ▶ Communication
- ▶ Positive Attitude Toward School & Learning
- ▶ Set and Maintain Boundaries / Expectations
- ▶ Grant Independence



Future Transition Activities

5th Grade Shadowing Day (Mid April)

- ▶ Shadow a current 6th grade Bulldog Ambassador during a class
- ▶ Have lunch with 6th grade
- ▶ Participate in transition workshop

MS Counselor Visits (Early May)



TOUR TIME

- ▶ Group W – Ms. Flury & Friends
- ▶ Group Y – Mr. Barton & Friends
- ▶ Group M – Ms. Reh, Ms. Ferree, & Friends
- ▶ Group S – Mr. Bumsted & Friends

At the conclusion of the tour we will be available to answer questions in the cafeteria.

