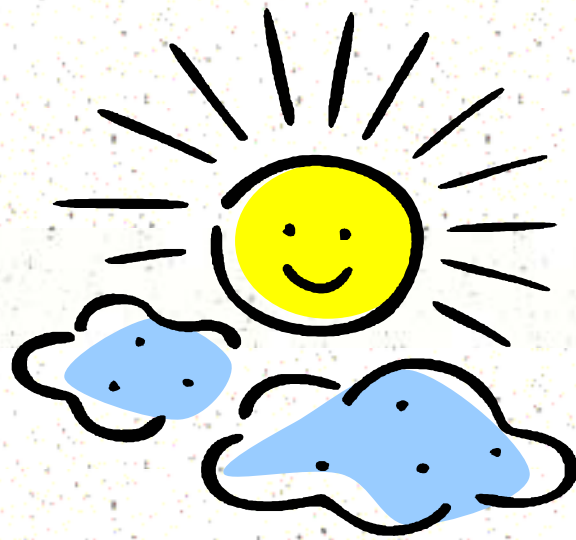


Domestic Violence

A Community Resources Guide
to Support Pima County
Residents



Tucson Safe & Bright Futures

How to Use This Guide

This resource guide provides a list of local services that can help victims of domestic violence and their children with a variety of needs in a time of crisis. We recommend that service providers use this guide to help victims find assistance when they need it. Giving the guide to victims to take home with them may jeopardize their safety if their abuser finds it. Instead, offer victims a safe and private place to talk, help them identify the services they need, and offer a telephone to make calls.

Some service providers listed in this guide are only open during normal business hours. If you are a victim and you need immediate assistance after hours, we recommend that you contact a 24-hour crisis line such as those listed on page 4.

While every effort has been made to ensure that the phone numbers listed in this guide are accurate and operational, some may have changed since the time of printing. One resource directory that will be updated on a continuing basis is www.az211.gov. Computers with Internet access can be used free of charge at local library branches.

WARNING:

If you are a victim of domestic violence and want to look for help or information on the Internet, please read this. Your safety is the most important thing. If you do not want anyone to know what websites you have visited please follow the steps below to help increase your safety when using the Internet.

Steps to keep others from knowing you have visited a website:

Netscape

Pull down Edit menu, select Preferences. Click on Navigator or choose 'Clear History'. Click on Advanced then select Cache. Click on "Clear Disk Cache". On older versions of Netscape: Pull down Options menu. Select Network Options, Select Cache. Click on "Clear Disk Cache".

Internet Explorer

Pull down Tools menu, select Internet Options. On General page, under Temporary Internet Files, click on "Delete Files". Under History click on "Clear History."

AOL

Pull down Members menu, select Preferences. Click on WWW icon. Then select Advanced. Purge Cache.

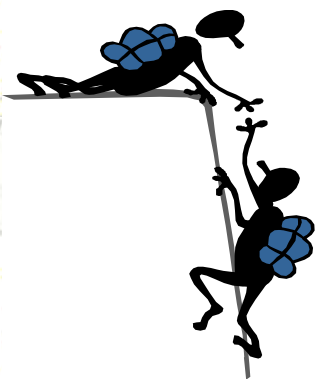
What is domestic violence?



Domestic violence is defined as physical, sexual, and/or psychological abuse committed by a person in an intimate or familial relationship against another person in that relationship. Domestic violence includes a full range of power and control tactics, including coercion, threats, intimidation, emotional/physical/sexual abuse, economic abuse, blaming victims, isolating them from others, and using children as bargaining chips. The root causes of domestic violence are power and control over another person, which can be so extreme that any resistance to that control may explode into violence and even death to the victim. Most victims of domestic violence are women. Domestic violence occurs at all levels of society, in all socioeconomic classes, and in all ethnic backgrounds regardless of social, economic, or cultural factors.¹

What effect does it have on children?

Children, especially children age 6 or younger, can suffer extreme consequences from exposure to domestic violence immediately, short-term and long-term. The earlier there is intervention, the better the possibility of reversing the impact of violence and of preventing future exposure.² Violence may not be genetic, but it can be passed down from parents to their children.³ Children learn what they see, and exposure to violence as a child is considered a leading predictor of violent behavior in adolescence.⁴ These children grow up to have children of their own, and thus the cycle of violence may be continued.



Domestic Violence Services

Shelters and Safe Houses

*AVA Crisis Center	795-4880
*Brewster Center	622-6347
*Elder Shelter Domestic Violence (24hr. crisis line)	566-1919
*Casa Amparo-Spanish speaking	746-1501
Kom Cukud Ki-Tohono O'Odham Nation (Safe house and crisis line-Sells)	1-866-666-4889
Lutheran Social Ministries (24hr. crisis line)	748-2300
Reunion House (12-17 yr. olds)	320-5122
*Tucson Centers for Women & Children	795-4266
Wingspan Anti-Violence Project	624-0348
Wingspan toll free #	1-800-553-9387

Domestic Violence Advocacy

Administration of Resources & Choices Elder Abuse	327-2665
Arizona Child Abuse or Neglect (hotline #)	1-888-SOS-CHILD (-767-2445)
Boys & Girls Town National	1-800-448-3000
Suicide & Crisis Hotline-TTY	1-800-448-1833
*Brewster Center Outreach & Advocacy Office	881-7201
◇ Green Valley	260-0294
◇ Sells Office	1-520-993-0060
Sin Violencia ¡Ganaremos!-Spanish speaking	573-3637
Casa de Esperanza (Green Valley)	625-2273
*DES/Family Connections	594-6350
Davis Monthan Air Force Base Family Advocacy (for military personnel)	228-2104
*National DV Hotline	1-800-799-SAFE/7233
Pima County Attorney's Office-Victim Witness Program	740-5525
Tohono O'Odham Nation, Prosecutor's Office-Sells, AZ	1-520-383-4590
Tucson Indian Center	884-7131
Walking in Balance	879-5777
Wingspan LGBT Hotline	1-800-553-9387


Restraining Order & Orders of Protection Assistance

*Brewster Center Outreach and Advocacy Office	881-7201
Green Valley Justice Court	648-0658
Marana Municipal Court	682-3980
Oro Valley Magistrate Court	229-4780
Pima County Justice Court	740-3171
Pima County Superior Court	740-3210
South Tucson City Court	917-1568
Tucson City Court	791-4971

Immigrant Services

Asylum Program of Southern AZ (APSA)	623-4555
Immigration Law Clinic	626-5232
Mexican Consulate	882-5595(ext.109)
Pima County Bar Association (lawyer referral service)	623-4625
Southern Arizona Legal Aid	623-9465

Counseling/Mental Health

Arizona's Children Association	622-7611	
Arizona Center for Mind/Body Therapy	721-2464	
Catholic Social Services	623-0344	
Casa de Esperanza	625-2273	
Center for Life Skills Development	229-6220	
Child & Adolescent Traumatic Stress Service	886-5111(ext. 429)	
Community Partnership of Southern AZ toll free #	318-6946 1-800-771-9889	
*Domestic Violence Outreach Services	881-7201	
*Elder Shelter & Later Life DV Services	327-2665	
Esperero Family Center	326-8424	
Fuerza y Esperanza Counseling Services	295-0999	
Jewish Family and Children's Services	795-0300	
La Frontera West Office	884-9920	

Counseling/Mental Health continued

La Frontera East Office	296-3296
Las Familias	327-7122
Lutheran Social Ministries	748-2300
Oasis Center (limited to University of Arizona students & faculty)	626-2051
Our Family Services (Kool-Kids anger management-kids 8-12/for teens 13-17, teens against violence groups)	323-1708
Pantano	623-9833
Providence	748-7108
Reflection Family Services, Inc.	795-0981
Southern Arizona Center Against Sexual Assault	1-800-400-1001
Southern Arizona Mental Health Center (24hr)	622-6000
Strengthening the Circle	623-0100
Su Voz Vale/Your Voice Counts	434-0195
*Tucson Center for Women & Children	795-4266
Wingspan Anti-Violence Project	624-0348
YWCA Women's Counseling Network	884-7810

Legal Assistance



*Arizona Coalition Against Domestic Violence Legal Hotline	1-800-782-6400
*Brewster Center Advocacy Center	881-7201
Lawyer Referral	623-4625
Mexican Consulate	885-5595(ext 109)
Pima Council on Aging Legal Clinic	790-7262
South Tucson Prosecutor's Office	740-1802
Southern Arizona Legal Aid	623-9461
University of Arizona Domestic Violence Law Clinic (closed summers)	626-5232
University of Arizona Elder Law Clinic (60 yrs. & older, closed summers)	623-5137

Public Health Nursing

Services and information provided for the following topics: family planning, pregnancy, parenting and child care, immunizations, communicable diseases, safety, crisis intervention and general health. Public health nurses specialize in case management and home visits.



○ North Office	293-4620
○ South Office	889-9543
○ East Office	298-3888
○ Green Valley Office	648-1626
○ Ajo Office	387-7206

Low Income Medical

El Rio Health Center	670-3909
Kids Care	1-877-764-5437
Planned Parenthood	884-5562
St. Elizabeth's of Hungary	628-7871
Women's Pregnancy Center <i>(offer free pregnancy tests, pregnancy options)</i>	622-5774

Community Shelters

Women and Children

Casa de Los Niños <i>(children birth-8 years)</i>	624-5600
Casa Paloma <i>(no children)</i>	882-0820
Gospel Rescue Mission-Bethany House <i>(24 hours)</i>	622-3495
New Beginnings**	292-0648
Open Inn Runaway Shelter <i>(children under 18 years)</i>	670-9040
Our Family Services <i>(18-22 years)</i>	323-1708
Reunion House <i>(teens 12-17 years)</i>	320-5122
Salvation Army Hospitality House <i>(24 hours)</i>	622-5411
Short Term Shelter <i>(female teens 12-17 years)</i>	887-8773
Street Outreach <i>(13-17 years)</i>	323-1708
Traveler's Aid	622-8900

**with condition that survivor has not experienced domestic violence in last 4-5 months



Community Shelters continued

Men

Gospel Rescue Mission (24 hours)	622-3495
Primavera Shelter	623-8900
Salvation Army Hospitality House (24 hours)	622-5411
Traveler's Aid	622-8900

Rent/Mortgage/Utilities

AFL/CIO (American Federation of Labor/Congress of Industrial Organization-utilities)	751-9672
Arizona Housing & Prevention Services (rent, mortgage, utilities)	498-4613
Chicanos Por la Causa (employment, mortgage, rent, utilities)	882-0018
Greater Littletown Resource Group (county residents only)	574-2263
Interfaith Community Service (rent, utilities, door locks, prescriptions)	297-6049
Marana Health Center (utilities)	682-4111
Pima County Community Action Agency (hotline-rent, utilities, job/computer training)	243-6688
Project P.P.E.P (Portable, Practical, Education, Preparation) (utilities)	622-3553
Salvation Army Hospitality House	
◊ food boxes	622-5411
◊ rental assistance & utilities	294-5224
St. Vincent de Paul Society (food boxes, financial assistance for rent & utilities)	628-7837
Tucson Indian Center (rent & utilities)	884-7131
Tucson Urban League (rent & utilities)	623-4388

Public Assistance



Parenting Education

Includes counseling, support and education services

Birth to Five Hotline

1-887-705-5437

(Available for questions-early childhood specialist, mental health specialist, early literacy specialist, disability specialist, registered nurses & mental health counselors)

Parenting Arizona

319-1040

(parenting classes & child care)

Child Protective Services

1- 888-767-2445

Parent Aid

798-3304

(weekly in-home visits & workshops)

Our Family Services

323-1708

(parenting classes -offered in English & Spanish, parent-child interaction therapy, play therapy, school mediation classes)

Parent Connection

321-1500

(parenting classes, playgroups, support groups)

Pima County Parenting Coalition

624-9290

(parenting infoline)

Childcare Resources

Angel Children's Center

326-7135

(child care services)

Arizona Education Intervention Program (AZEIP)

325-6495

(developmental assistance-birth to 3)

Child Care Resource & Referral

325-5778

Project Me Too

795-4977(x234)

(information and support for special needs children)

Financial Assistance

City of Tucson Housing Programs

791-5262

Crime Victim Compensation

740-5525

(counseling, lost wages, funeral expenses, medical bills)

Social Security Tucson Office



1-800-772-1213

Arizona Department of Economic Security (DES)

◇ Northside

293-0214

◇ Downtown

791-2732

◇ Midtown

881-4081

◇ Southside

578-8456

741-9751

620-6616

◇ Eastside

745-5802

◇ Northwest

744-5850

Food & Material Goods



Crisis Pregnancy Center

622-5774 or 806-0266

(diapers, maternity clothes, prenatal care)

Giving Tree Outreach Program

320-5437

(clothing, food boxes)

Life Resource Center

622-5774 or 806-0266

(diapers, maternity clothes)

Lutheran Social Ministries

748-2300

(food boxes, clothing)

Reachout

321-4300

(diapers, formula, baby items)

Women's Life Resource Center

325-6041

(diapers, clothing, household goods)

*specifically for domestic violence

Resources for the Elderly

Adult Protective Services

*Elder Shelter -hotline

Our Family Services

(case management, counseling & support groups)

Pima County Reverse Mortgage Programming

Pima Council on Aging

(advocacy, ombudsman, etc.)

881-4066

566-1919



323-1708

327-2665

790-7262

Offender Services

Arizona Center for Mind/Body Therapy

Aztec Counseling Services

Cactus Counseling Association

Center for Life Skills Development

Counseling & Consulting Services

Fuerza y Esperanza Counseling Services

Marana Health Center

Next Step Counseling

Our Family Services

(tailored interventions for men & women, in English & Spanish, community & judicial mediation)

Portable Practical Education

Reflection Family Services

721-2464

297-1923

798-3659

229-6220

882-0090

295-0999

682-4111

747-0405

323-1708

792-5704

795-0981

Assistance with Pets



Hermitage Cat Shelter

Safe Haven Animal Shelter

571-7839

327-6088

References

¹Adapted from the *MAG Regional Domestic Violence Plan*, August 1999. Maricopa Association of Governments.

²*San Francisco's Response to Children Exposed to Domestic Violence: A Five Year Report*. 2005. San Francisco Safe Start: City and County of San Francisco.

³*Adverse Childhood Experiences Study*, accessed at <http://www.cdc.gov/nccdphp/ace/findings.htm> on October 13, 2006.

⁴Singer, M.I., Miller, D.B., Guo, S. Slovak, K, and Frieson, T. 1998. *The Mental Health Consequences of Children's Exposure to Violence*. Mandel School of Applied Social Sciences, Case Western Reserve University.

Tucson Safe & Bright Futures is a project of the Pima Prevention Partnership funded by Federal Grant Number 5 SBFHP041016-02-00 awarded by the Office of Public Health and Science, a division of the U.S. Health and Human Services.



creating conditions for change

Pima Prevention Partnership
2525 E. Broadway, Suite 100
Tucson, AZ 85716
520-624-5800
www.thepartnership.us

Tucson Safe & Bright Futures Web Page available at
www.violencefree4kids.org

*Please feel free to copy and reproduce this information