



Weekly Newsletter November 15, 2019

Chipotle Fundraiser

We hope that you will join us this Sunday at the Chipotle in Brandywine. Our fundraiser is scheduled from 4:00-8:00 pm. Please forward our flyer to your friends and family! Note the following rules regarding this event.

- Online orders will not be included in the fundraiser total. Only in-store purchases will count.
- Make sure to bring the fundraiser flyer (hard copy or on your phone) or tell the cashier at checkout that they are there for a fundraiser before they pay! If they don't tell the cashier, St. Mary's won't get credit for the sale.
- We are not permitted to hand out flyers to anyone (including your own supporters) or promote the event inside or outside of the restaurant or in the parking lot at any time. Violation of this policy will result in our fundraiser being cancelled. All promotion should be done prior to the fundraiser. Please make sure to tell your family and friends about this policy.
- Gift cards purchased during fundraisers do not count towards total donated sales, but purchases made with an existing gift card will count.

SCHOOL SPIRIT TASTES GREAT



Volunteers Needed for Pancakes and Pajamas

Mrs. Johnson needs some assistance with the Pancakes and Pajamas event on Friday, November 22. We need help with games, meal prep, set up, clean up, and more. Please click on the link to SignUpGenius.com to volunteer for a position. If you have questions, please e-mail k@smsp.school.

High School Placement Test

Attention 8th Grade Parents! The High School Placement Test (HSPT) is scheduled for Wednesday, November 20. The test will be given here at school and everyone is registered and signed up for the test. Please be sure that your 8th grader is well rested and has had a healthy breakfast. We ask the whole school family to pray for these students during that time.

Looking Ahead

- † **Sunday, November 17**
Chipotle Fundraiser 4:00-8:00
16110 Cadillac Drive
Brandywine, MD 20613
- † **Tuesday, November 19**
Middle School Field Trip to the
Saint John Paul II National Shrine
- † **Wednesday, November 20**
High School Placement Test
for 8th Grade
2nd & 3rd Grade Field Trip to
The Children's Science Center
- † **Friday, November 22**
Pancakes and Pajamas 6:00 - 8:00 pm
- † **Monday, November 25**
All School Mass
- † **Wednesday, November 27**
Pastor's Holiday
School Closed
- † **Thursday, November 28 -
Monday, December 2**
Thanksgiving Holiday
School Closed
- † **Sunday, December 1**
Advent Begins
- † **Monday, December 2**
Classes Resume
- † **Tuesday, December 3**
First Checkmates Meeting 3:30
- † **Thursday, December 5**
First Journalism Club Meeting 3:15
- † **Friday, December 6**
Progress Reports Sent Out
Open House 9:00-11:00
Early Dismissal 12:00
2020-21 SY Tuition Assistance
Application Deadline!!!
- † **Saturday, December 7**
HSA Breakfast with Santa 9:00-11:00
- † **Sunday, December 8**
Feast of the Immaculate Conception
Holy Day of Obligation
- † **Wednesday, December 18**
Christmas Program 6:00 pm
- † **Friday, December 20**
No Aftercare Available
- † **Saturday, December 1 -
Sunday, January 5**
Christmas Break
School Closed
- † **Monday, January 6**
Classes Resume
- † **Monday, January 20**



Sign up for Lunch and Recess Duty

Some parents have inquired about volunteer opportunities during the school day. We would love some help during lunch and recess. We need help distributing food at lunch time and then assistance watching the children at recess. You must be Virtus cleared to do lunch and recess duty. Please do not sign up unless you are Virtus cleared or you will be turned away. Click on the link below to choose a date. You will receive an e-mail reminder 2 days before your sign up date. Remember, each family is required to complete at least 20 hours of volunteer service at the school each year. [Click here to sign up for lunch and recess duty.](#)

Tuition Assistance Applications

The window for families to apply for tuition assistance for the 2020-21 school year began on October 1 and ends on December 6. The process requires that you submit tax documents and other forms. We ***strongly encourage*** every single St. Mary's family apply for tuition assistance. There are two tuition assistance funds, one from the Archdiocese of Washington and one from St. Mary's Parish. The amount of money that is distributed by the Archdiocese of Washington is partially determined by the number of tuition assistance applications they receive from our families. The more applications the Archdiocese of Washington receives, the more assistance we will be able to provide to all of our students. Even if you do not think your family qualifies for assistance, please apply anyway.

We encourage all 8th grade students to apply, even if you decide not to attend to an ADW high school. If you have children in elementary and high school, you only have to apply once for all of your children.

In addition to the money from the Archdiocese, we also have assistance available from St. Mary's Parish. ***YOU MUST APPLY FOR TUITION ASSISTANCE FROM THE ARCHDIOCESE*** in order to be awarded assistance from St. Mary's Parish. The admissions team will be very strict about this policy for the 2020-21 school year. You will receive several notices between now and December 6th. Thank you in advance for your attention to this.

Hot Lunch Website Sponsors

Do you own a business? Would you like to reach 140 families that view our OrgsOnline website regularly? If you would like your business information to appear in our online lunch ordering system. You can become a sponsor for just \$250 per school year or \$125 for 1/2 school year! Sponsor names are displayed in the website where the school families place their online school lunch orders.

The lunch system can display sponsor recognition for up to four sponsors. There is one sponsor listed per page as families place lunch orders. A family with one student will see at least four pages during their transaction.

Artwork Specifications

Acceptable image files are:jpg -or- .png file formats
Sponsorship display area is: 250px wide & 100px high

Having sponsors helps us to offset the cost of the hot lunch program. If you are interested in placing an advertisement on our website, please contact May Robinson in the school office.

EARN CASH FOR OUR SCHOOL
NO MORE CLIPPING. ALL YOU NEED IS YOUR SMARTPHONE.

The NEW and improved Box Tops mobile app uses state-of-the-art technology to scan your store receipt, find participating products and instantly add Box Tops to our school's earnings online.

LOOK FOR THE NEW LABEL:

HERE'S HOW IT WORKS:

- BUY BOX TOPS PRODUCTS**
You can find Box Tops on hundreds of products throughout the store.
- SCAN YOUR RECEIPT**
Use the app to snap a photo of your receipt within 14 days of purchase.
- EARN CASH FOR OUR SCHOOL**
Box Tops earnings are identified and automatically updated at BTFE.com.

You do not need to clip or send Box Tops labels to school.

BOX TOPS CLIPS ON PACKAGES

Traditional Box Tops clips are being phased out of production but may continue to be found on many products throughout the store as packages transition to the new Box Tops labels. **You can still clip these and send them to school.** Please make sure each clip has a valid expiration date.

- BUY BOX TOPS PRODUCTS**
- CUT OUT THE BOX TOP FROM EACH PACKAGE**
- SEND YOUR BOX TOPS TO SCHOOL**

SEE PRODUCTS & LEARN MORE ABOUT THE BOX TOPS APP AT BTFE.COM

THE ALL-NEW BOX TOPS IS HERE! DOWNLOAD THE APP:

SCHOOL SPIRIT TASTES GREAT



Make dinner a selfless act by joining us for a fundraiser to support St. Mary's School Of Piscataway. Come in to the Chipotle at **16110 Cadillac Drive** in Brandywine on **Sunday, November 17th** between **4:00pm** and **8:00pm**. Bring in this flyer, show it on your smartphone or tell the cashier you're supporting the cause to make sure that 33% of the proceeds will be donated to St. Mary's School Of Piscataway.



MEXICAN GRILL

Online orders will not be included in the fundraiser total. To ensure your purchase is counted in the fundraiser, be sure to order and pay in-restaurant. Gift card purchases during fundraisers do not count towards total donated sales, but purchases made with an existing gift card will count.



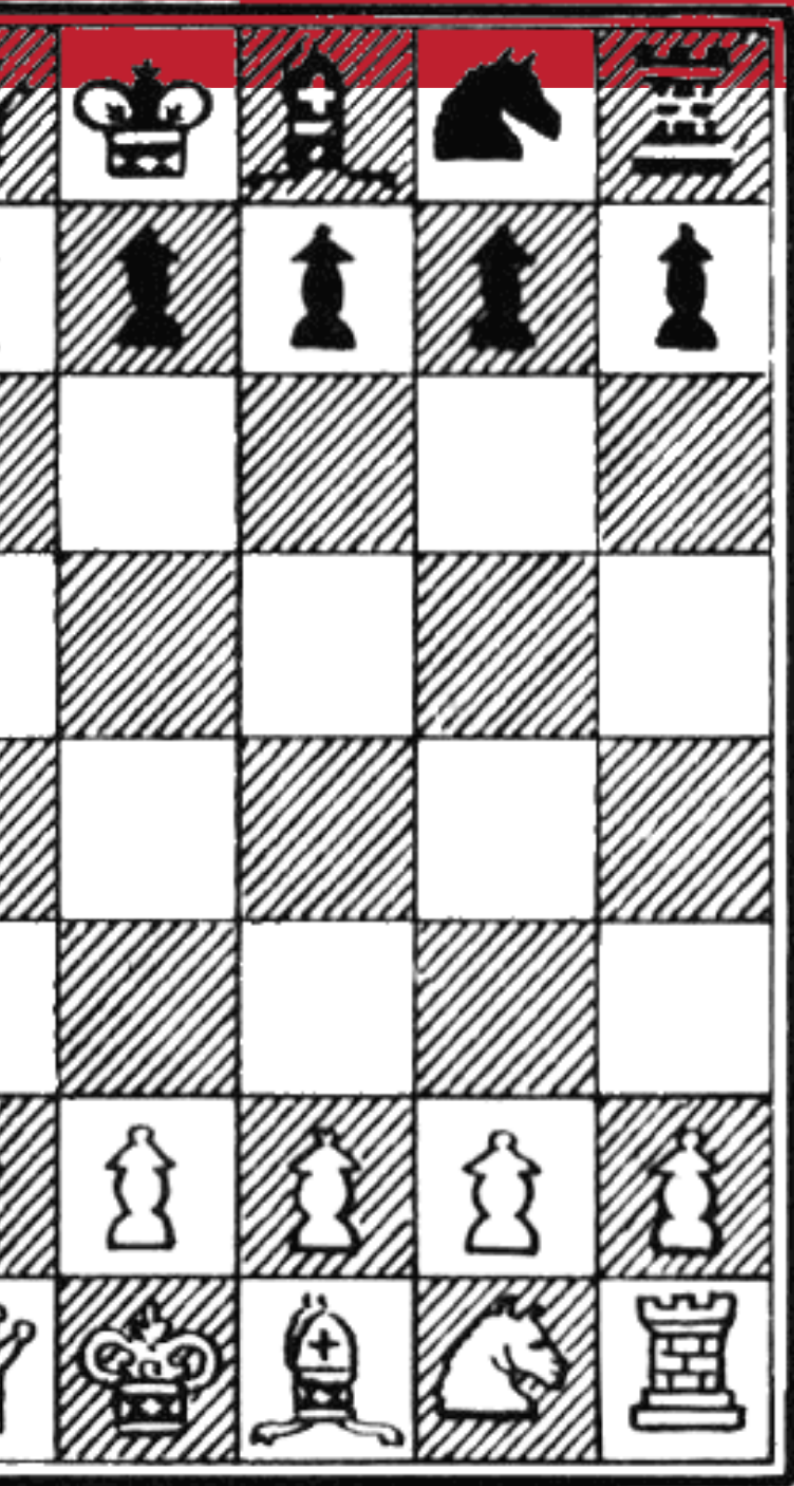
ST. MARY'S
SCHOOL OF
PISCATAWAY
PRESENTS

PANCAKES AND PAJAMAS!

FRIDAY
NOVEMBER 22
6 PM-8 PM

- Pancakes, sausage, fruit, and juice served
- Hot Chocolate Bar
- Books, board games, and fun!
- Wear your favorite pajamas
- Bring at least one non-perishable food item to be donated to the DC Soup Kitchen

RSVP at www.StMarysPiscataway.org



JOIN CHECKMATES!

ST. MARY'S IS
BRINGING THE
CHESS CLUB BACK!
LEARN THE BASICS
OF CHESS AND
DEVELOP WINNING
STRATEGIES.

MODERATED BY
MAXIMO MARARAC
(GRANDPARENT VOLUNTEER)

TUESDAYS
DEC. 3 - FEB. 4
3:30 PM - 4:30 PM
SCIENCE LAB

**NO EXPERIENCE NECESSARY.
STUDENTS, PARENTS, & STAFF ARE WELCOME!**