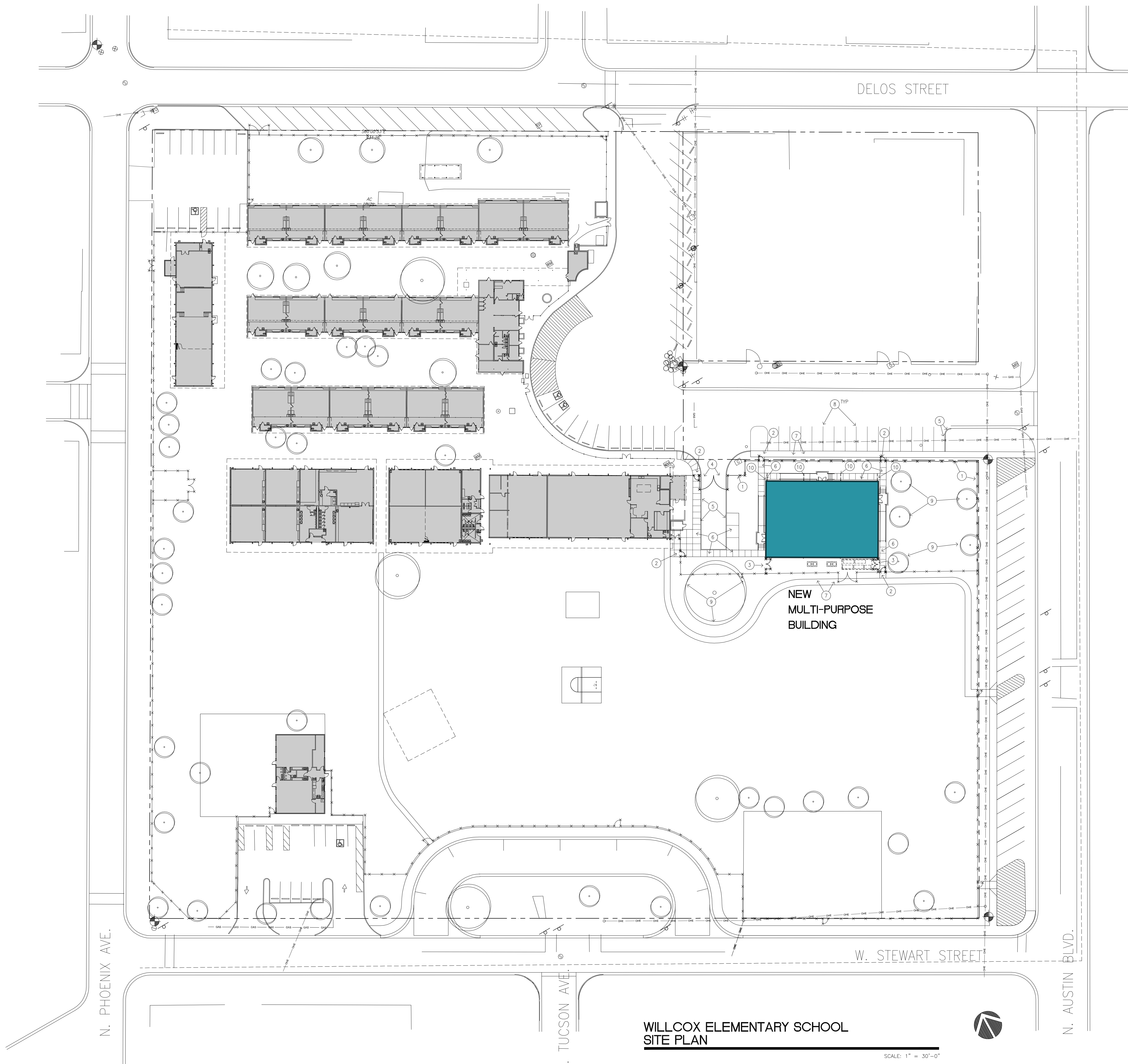


Plot Date: 1-10-14, 09:35am, Drawing scale: 1/8" = 1'-0"
 User: pdh, Path: C:\Users\pdh\Documents\1329-A131
 Last Saved: 1-10-14, 09:04am



**WILLCOX ELEMENTARY SCHOOL
 SITE PLAN**

SCALE: 1" = 30'-0"

NOTES

1. NEW 6'-0" HIGH CHAIN LINK FENCE. SEE DETAIL.
2. NEW 6'-0" HIGH X 4'-0" WIDE CHAIN LINK GATE. SEE DETAIL.
3. NEW 6'-0" HIGH X 8'-0" WIDE DOUBLE LEAF CHAIN LINK GATE. SEE DETAIL.
4. NEW 6'-0" HIGH X 23'-0" WIDE DOUBLE LEAF CHAIN LINK GATE. SEE DETAIL.
5. NEW CONCRETE CURB. SEE DETAIL.
6. NEW CONCRETE SIDEWALK WITH EXPANSION JOINTS 20'-0" O.C. AND AT VERTICAL SURFACES. CONTROL JOINTS AS INDICATED. SEE DETAILS.
7. EXISTING CONCRETE SIDEWALK.
8. 4" WIDE PARKING LOT STRIPING.
9. EXISTING LANDSCAPING.
10. DOWNSPOUT WITH STEEL TUBE SUPPER AT SIDEWALK. SEE DETAIL.

GENERAL NOTES

A



MODERNIZATION OF
WILLCOX SCHOOLS
 WILLCOX UNIFIED SCHOOL DISTRICT No.13
 WILLCOX, AZ 85643

PRELIMINARY
 NOT FOR
 CONSTRUCTION
 OR
 RECORDING

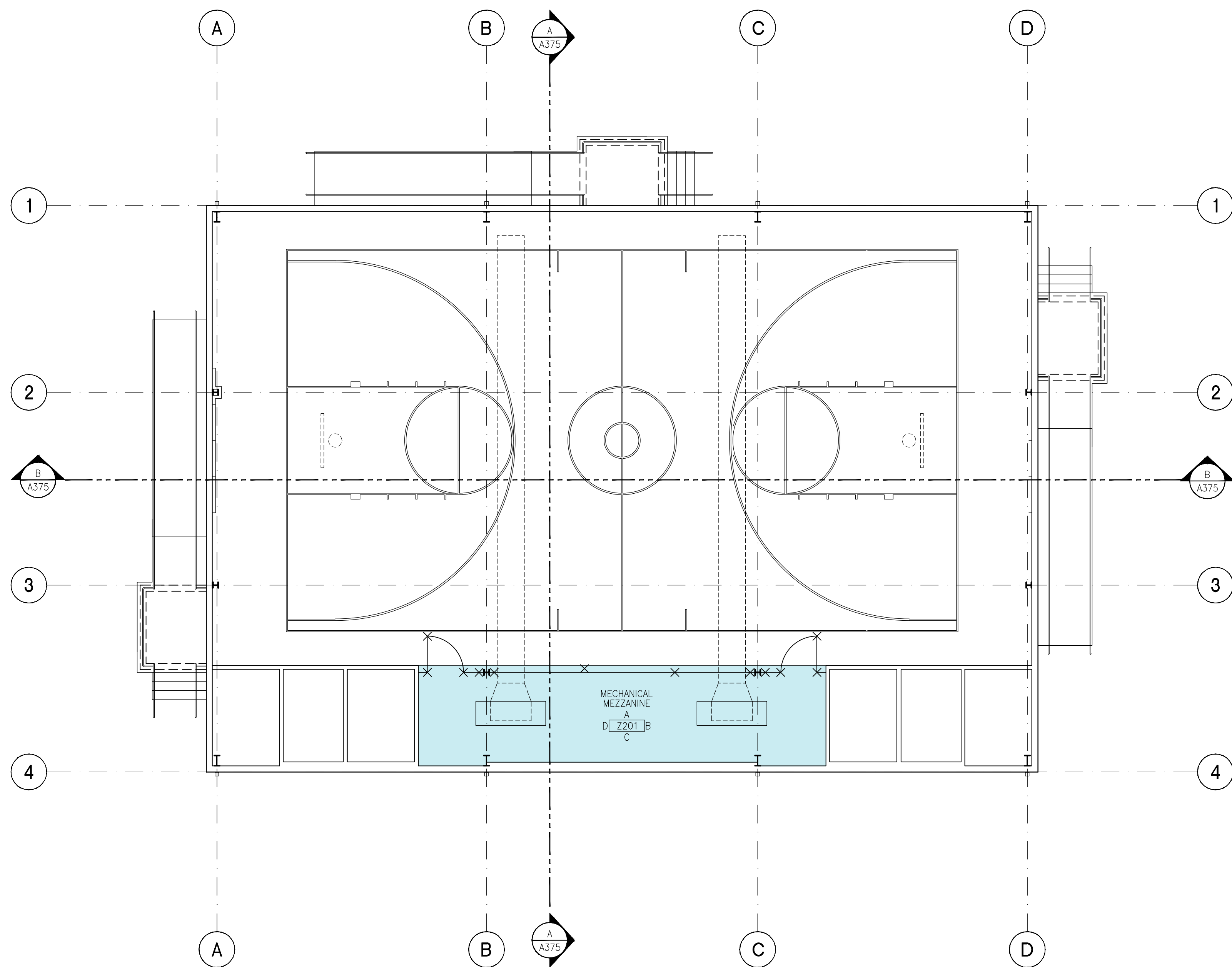
Job No. 1329
 Drawn PDH
 Checked PDH
 Date
 Revised

**PRELIMINARY
 SET**

HDA ARCHITECTS, LLC.
 459 N. Gilbert Road, Suite C-200, GILBERT, AZ 85234
 TEL: (480) 539 8800 FAX: (480) 539 8608
**WILLCOX ELEMENTARY SCHOOL
 SITE PLAN**

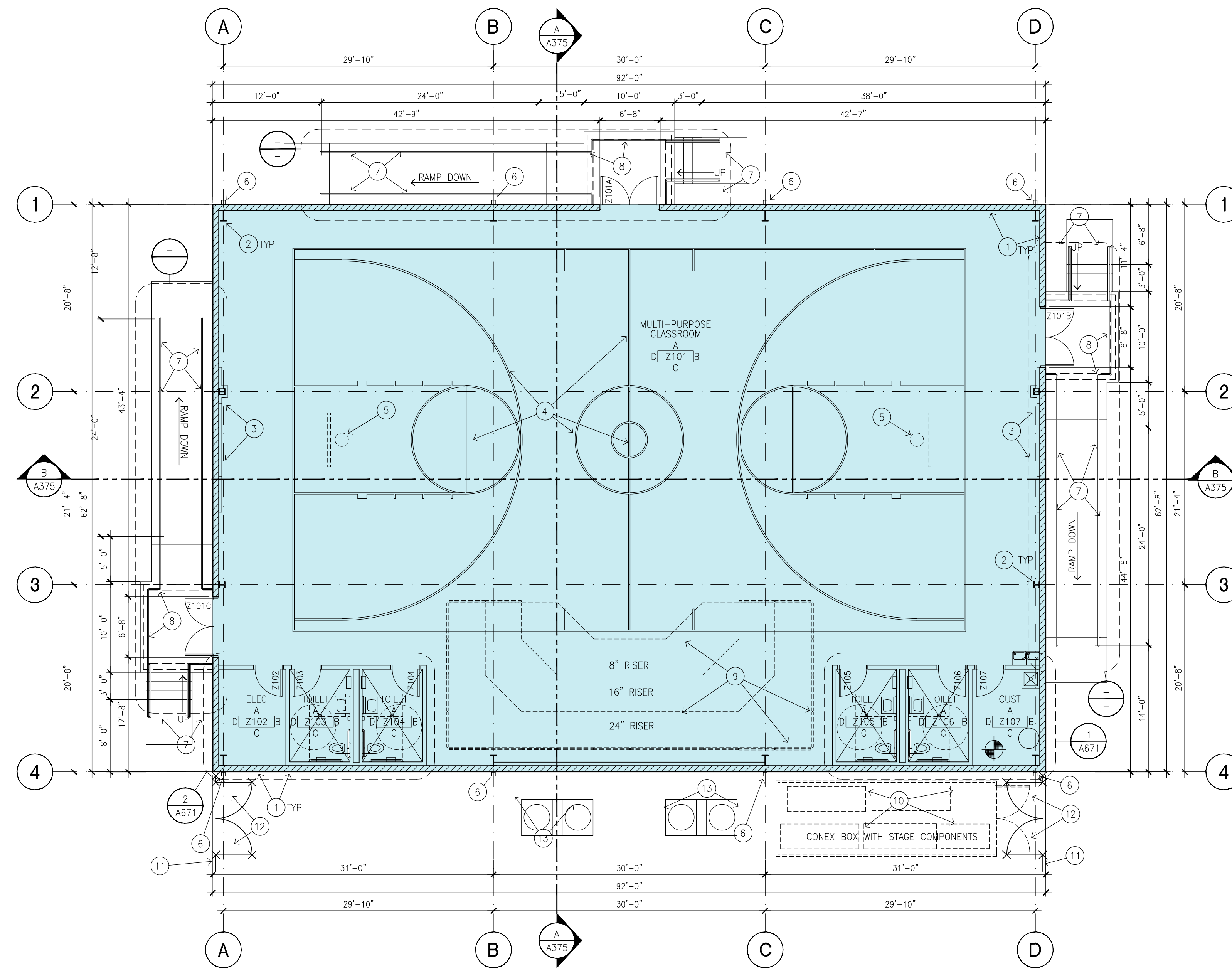


Sheet No.
A131



**BUILDING 'Z'
MEZZANINE FLOOR PLAN**

SCALE: 1/8" = 1'-0"



**BUILDING 'Z'
FLOOR PLAN**

SCALE: 1/8" = 1'-0"

NOTES

1. 8X8X16 CMU WANSLOT.
2. PRE-ENGINEERED METAL BUILDING COLUMN.
3. WALL MATS.
4. BASKETBALL COURT STRIPING WITH VCT KIT.
5. FORWARD FOLDING BASKETBALL BACKSTOP.
6. DOWNSPOUT.
7. FREE STANDING METAL HANDRAIL SEE _____
8. FREE STANDING METAL GUARD RAIL SEE _____
9. DEMOUNTABLE STAGE COMPONENTS N.L.C.
10. 8'X8'X24' CONEX BOX FOR STAGE COMPONENT STORAGE. N.L.C.
11. 6'-0" HIGH CHAIN LINK FENCING.
12. 8'-0" WIDE X 6'-0" HIGH CHAIN LINK GATE.
13. PAD MOUNTED MECHANICAL UNIT.

GENERAL NOTES

A



MODERNIZATION OF
WILCOX SCHOOLS
WILCOX UNIFIED SCHOOL DISTRICT No.13
WILCOX, AZ 85643

PRELIMINARY
NOT FOR
CONSTRUCTION
OR
RECORDING

Job No. 1329
Drawn PDH
Checked PDH
Date
Revised

PRELIMINARY
SET

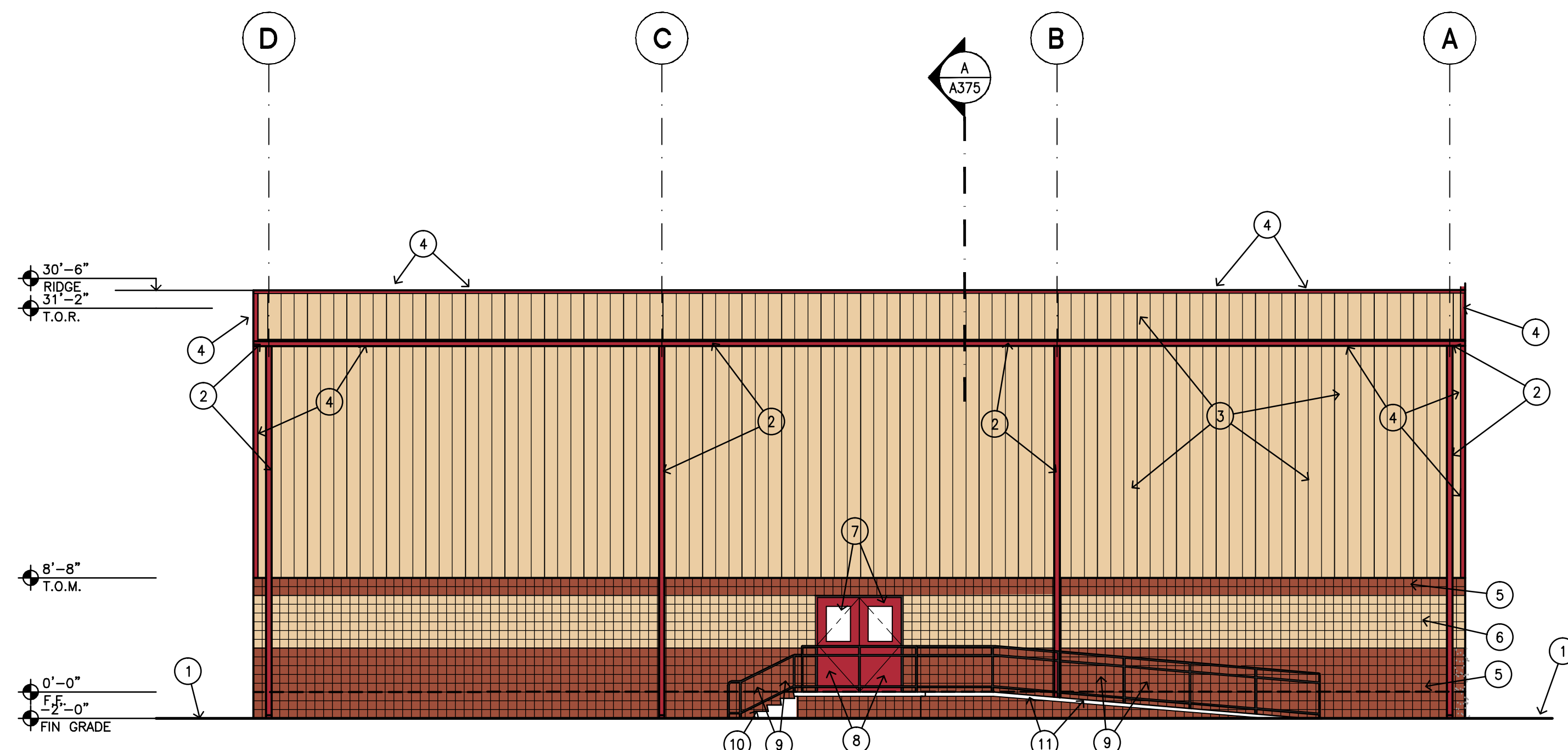
HDA ARCHITECTS, LLC.
459 N. Gilbert Road, Suite C-200, Gilbert, AZ 85234
TEL: (480) 539 8800 FAX: (480) 539 8608



Sheet No.

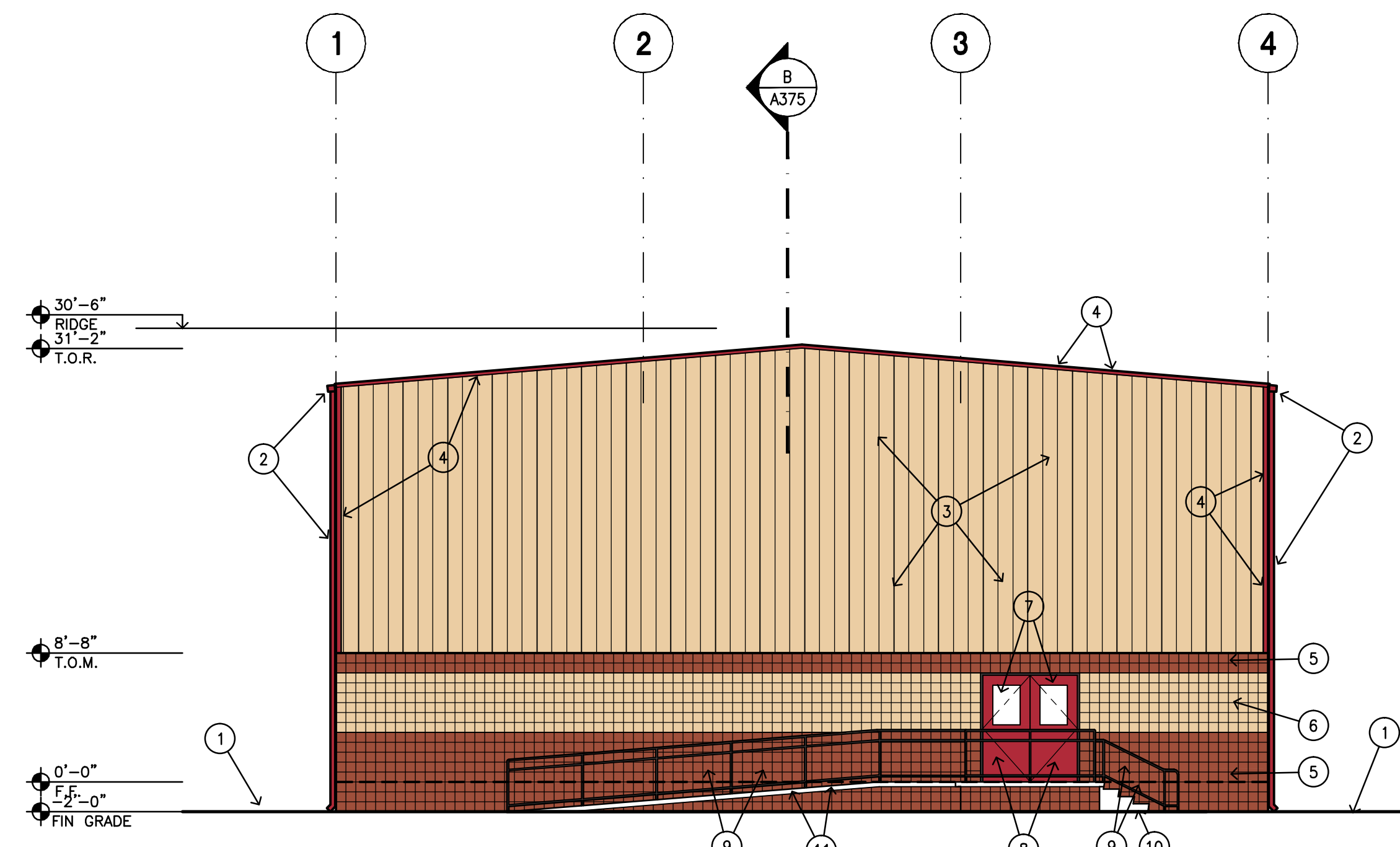
A272

BUILDING 'Z'
FLOOR PLANS



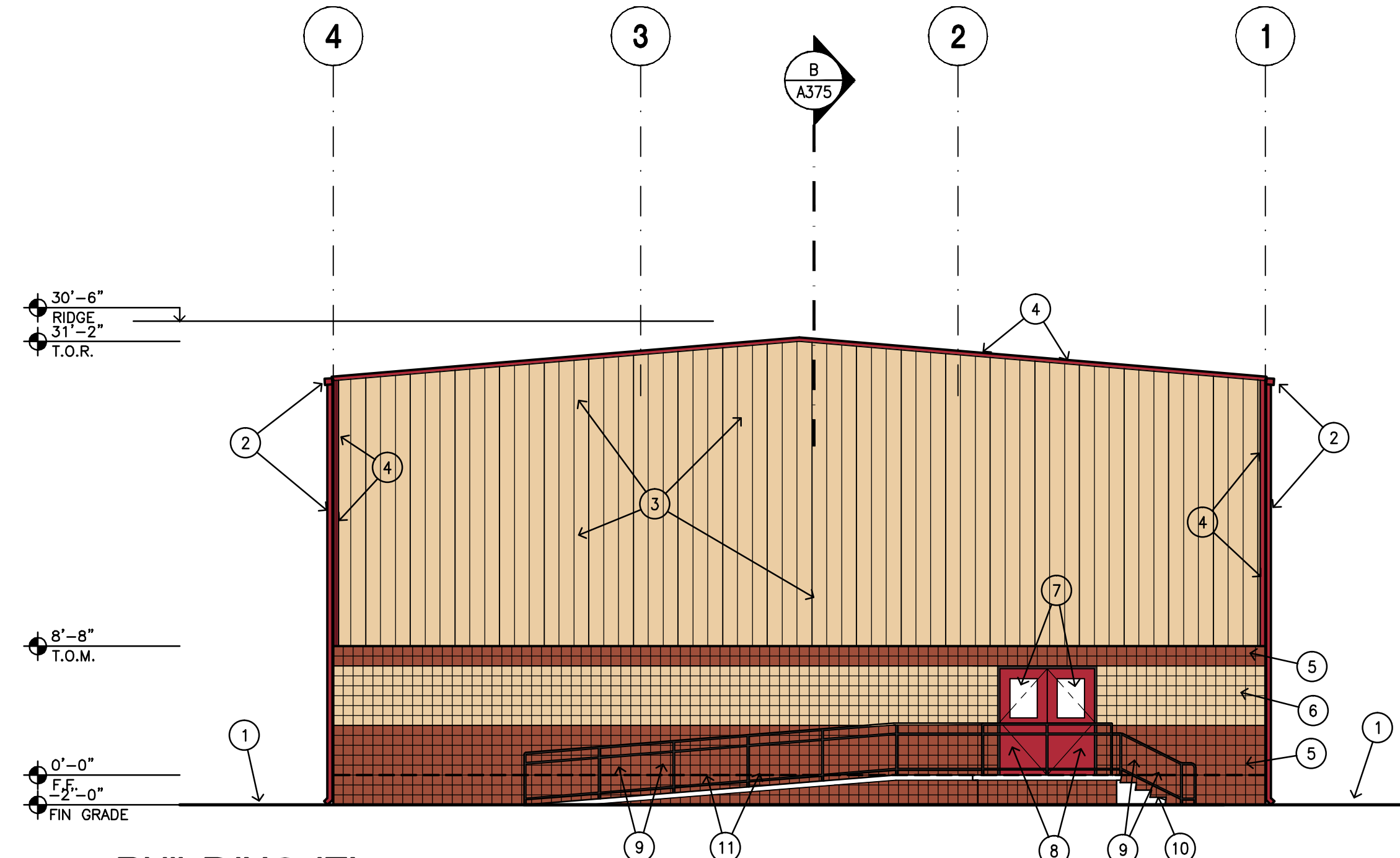
1 BUILDING 'Z' NORTH ELEVATION

SCALE: 1/8" = 1'-0"



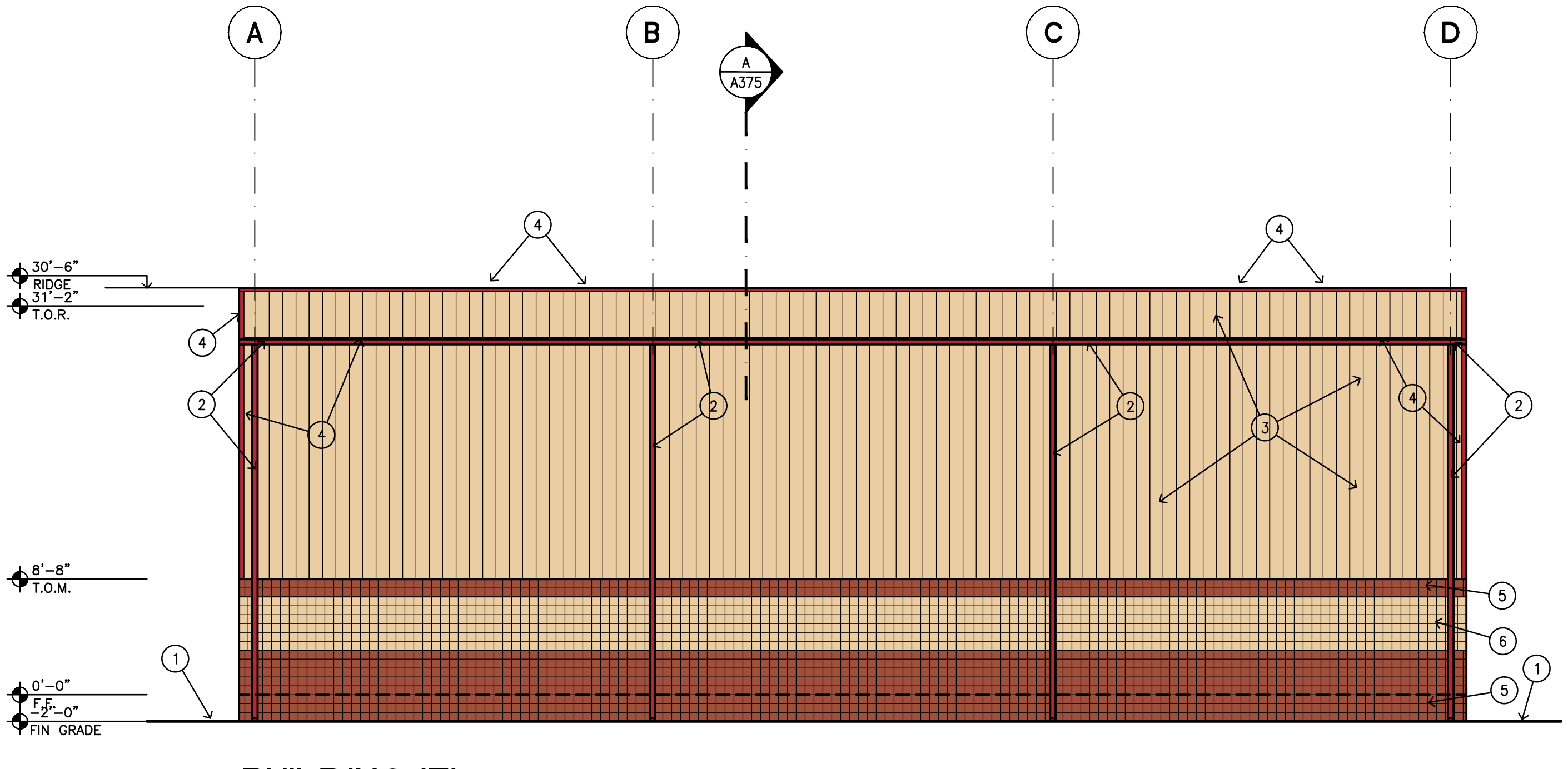
2 BUILDING 'Z' WEST ELEVATION

SCALE: 1/8" = 1'-0"



3 BUILDING 'Z' EAST ELEVATION

SCALE: 1/8" = 1'-0"



4 BUILDING 'Z' SOUTH ELEVATION

SCALE: 1/8" = 1'-0"

- NOTES**
1. FINISHED GRADE.
 2. PRE-FINISHED METAL DOWN SPOUT AND GUTTER. SEE DETAIL.
 3. PRE-FINISHED METAL SIDING.
 4. PRE-FINISHED METAL TRIM.
 5. 8x8x16 SINGLE SCORE CMU.
 6. 8x8x16 SINGLE SCORE CMU.
 7. HOLLOW METAL DOOR AND FRAME.
 8. HOLLOW METAL GUARDRAIL. SEE DETAIL.
 9. HOLLOW METAL GUARDRAIL. SEE DETAIL.
 10. CONCRETE STAIRS.
 11. CONCRETE RAMP.



MODERNIZATION OF
WILCOX SCHOOLS
WILCOX UNIFIED SCHOOL DISTRICT No.13
WILCOX, AZ 85643

PRELIMINARY
NOT FOR
CONSTRUCTION
OR
RECORDING

Job No.	1329
Drawn	PDH
Checked	PDH
Date	
Revised	

GENERAL NOTES

A.

PRELIMINARY SET

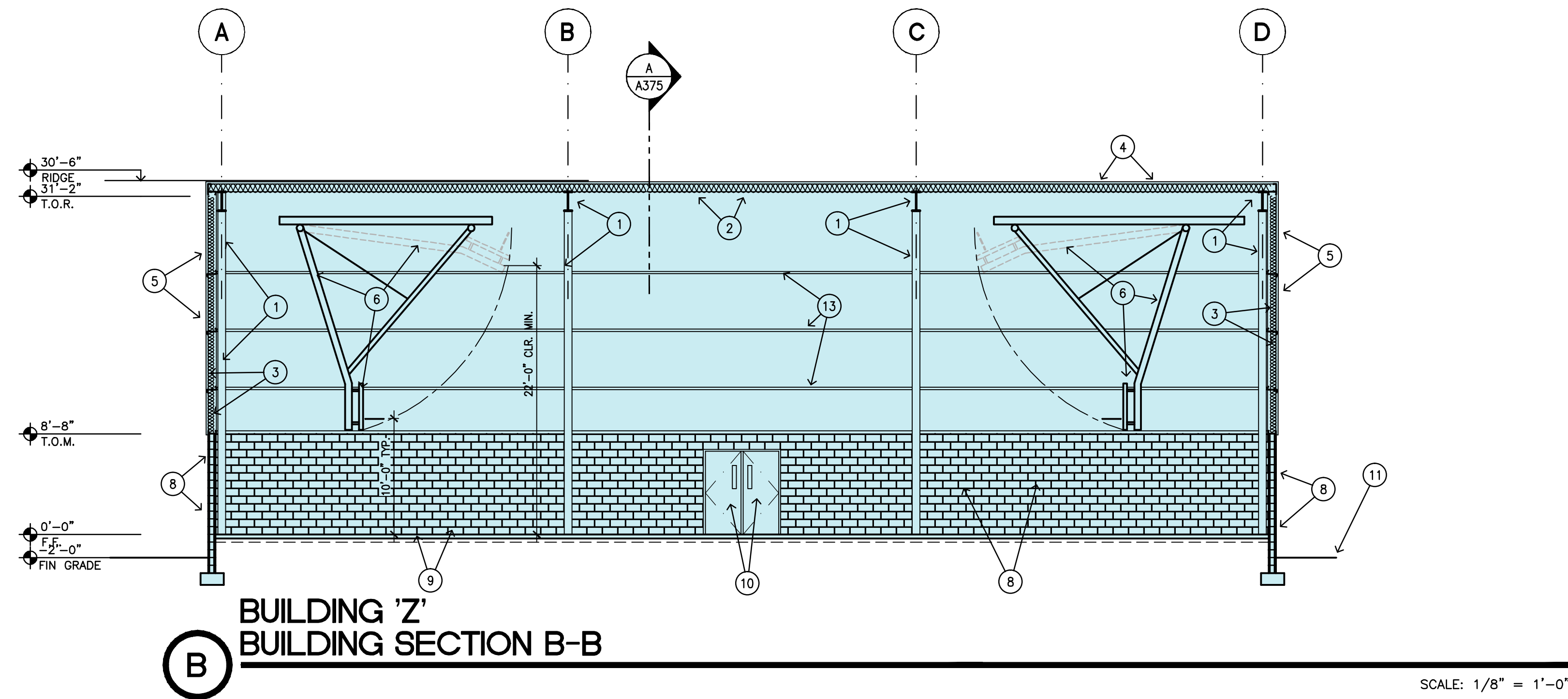
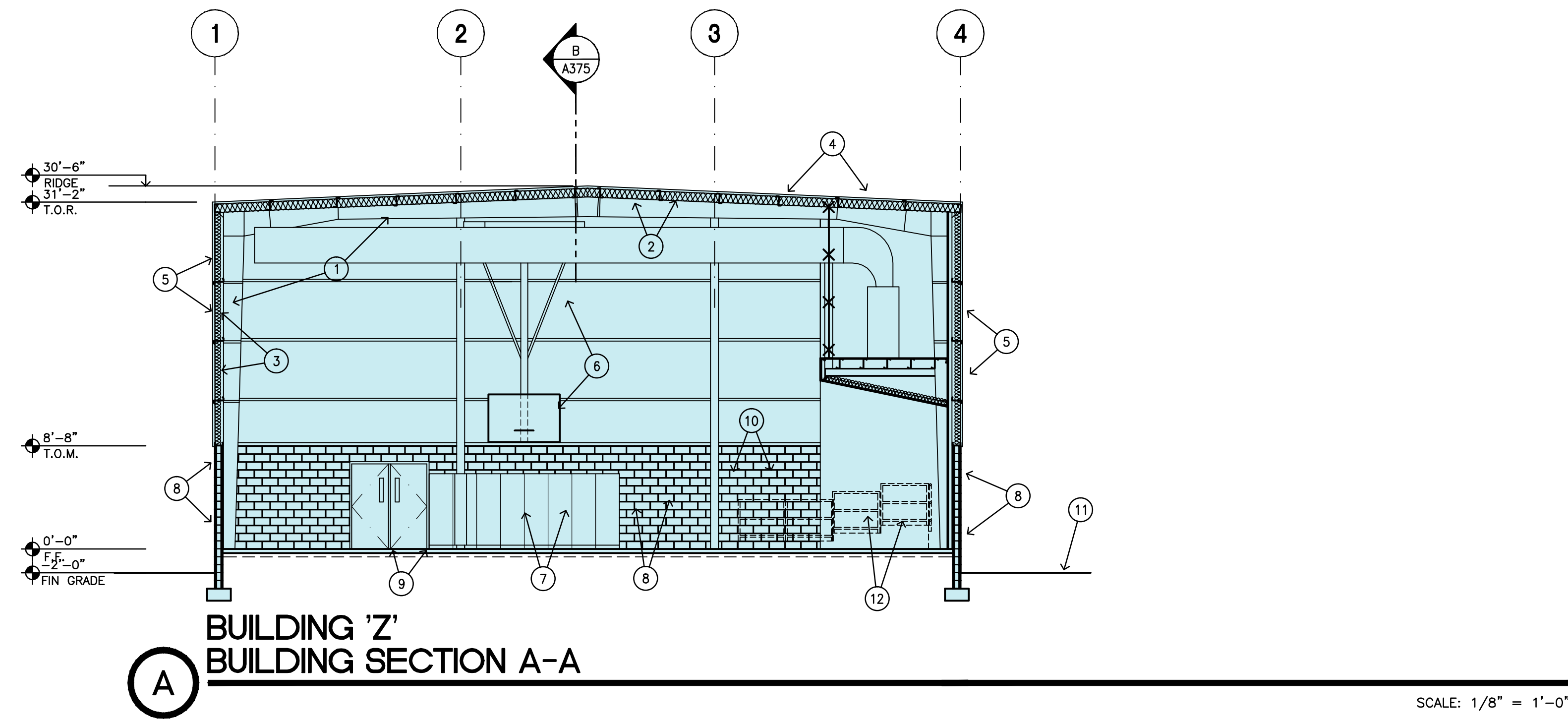
HDA ARCHITECTS, LLC.
459 N. Gilbert Road, Suite C-200, GILBERT, AZ 85234
TEL: (480) 539 8800 FAX: (480) 539 8608



Sheet No.

A371

Plot Date: 1-10-14 11:45am Drawing scale: 1/8" = 1'-0"
Drawing file: C:\329\329_26\329-4371
User: sward 1-10-14 8:56am



NOTES

1. PRE-ENGINEERED METAL FRAME.
2. R-30 BATT INSULATION WITH "BALL GUARD" PROTECTIVE SCRIM.
3. R-19 BATT INSULATION WITH "BALL GUARD" PROTECTIVE SCRIM.
4. PRE-FINISHED METAL ROOFING PANELS.
5. PRE-FINISHED METAL SIDING.
6. FORWARD FOLDING BASKETBALL BACKSTOP.
7. WALL MATS.
8. CMU WANSKOT.
9. CONCRETE SLAB ON ABC.
10. HOLLOW METAL DOOR AND FRAME.
11. FINISHED GRADE.
12. DEMOUNTABLE STAGE COMPONENTS.
13. HORIZONTAL STRUCTURAL "Z" MEMBER.



MODERNIZATION OF
WILCOX SCHOOLS
 WILCOX UNIFIED SCHOOL DISTRICT No.18
 WILCOX, AZ 85643

PRELIMINARY
 NOT FOR
 CONSTRUCTION
 OR
 RECORDING

Job No.	1329
Drawn	PDH
Checked	PDH
Date	
Revised	

GENERAL NOTES

A.

PRELIMINARY SET

HDA ARCHITECTS, LLC.
 459 N. Gilbert Road, Suite C-200, GILBERT, AZ 85234
 TEL: (480) 539 8800 FAX: (480) 539 8608



Sheet No.

A375

BUILDING 'Z'
BUILDING SECTIONS



Plot Date: 1-11-14 08:14pm Drawing scale: 1:1 By: poah
 File Path: C:\Users\poah\Documents\2014-01-03\1329 Bldg 2 Images 2
 Last Saved: 1-11-14 08:13pm



MODERNIZATION OF
WILLCOX SCHOOLS
 WILLCOX UNIFIED SCHOOL DISTRICT No.13
 WILLCOX, AZ 85643

PRELIMINARY
 NOT FOR
 CONSTRUCTION
 OR
 RECORDING

Job No. 1329
 Drawn PDH
 Checked PDH
 Date
 Revised

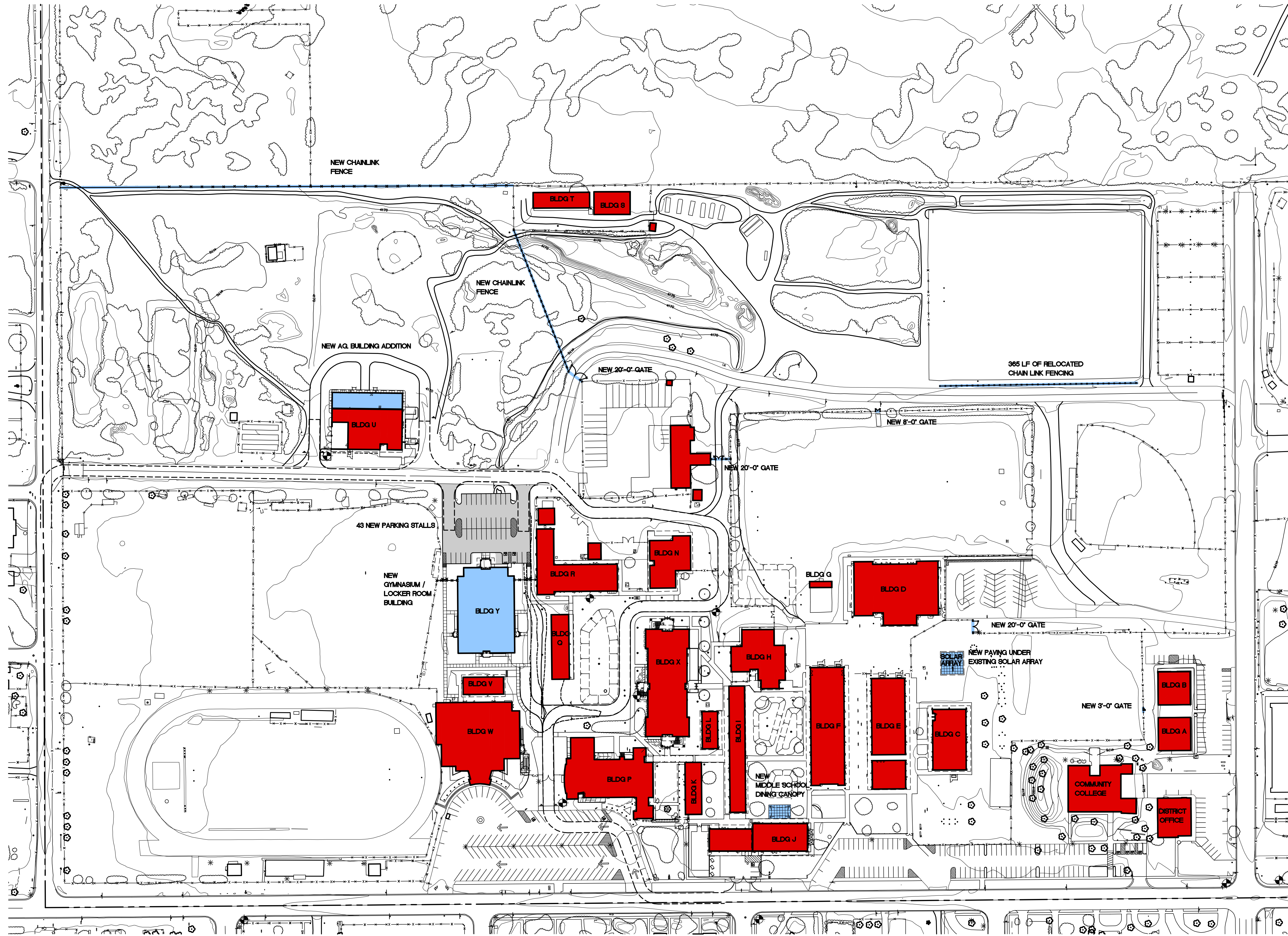
PRELIMINARY
 SET

HDA ARCHITECTS, LLC.
 459 N. Gilbert Road, Suite C-200, GILBERT, AZ 85234
 TEL: (480) 539 8800 FAX: (480) 539 8608
**WILLCOX ELEMENTARY SCHOOL - BLDG 2
 PERSPECTIVES**



Sheet No.

Plot Date: 1-12-14 07:45pm Drawing scale: 1/8"=1'-0"
 User: hda\jld\jld_001\1329-A110
 Last Saved: 1-02-14 08:25am



WILLCOX H.S. AND MIDDLE SCHOOL
 OVERALL SITE PLAN

SCALE: 1" = 80'-0"



NOTES



MODERNIZATION OF
WILLCOX SCHOOLS
 WILLCOX UNIFIED SCHOOL DISTRICT No.13
 WILLCOX, AZ 85643

PRELIMINARY
 NOT FOR
 CONSTRUCTION
 OR
 RECORDING

Job No.	1329
Drawn	PDH
Checked	PDH
Date	
Revised	

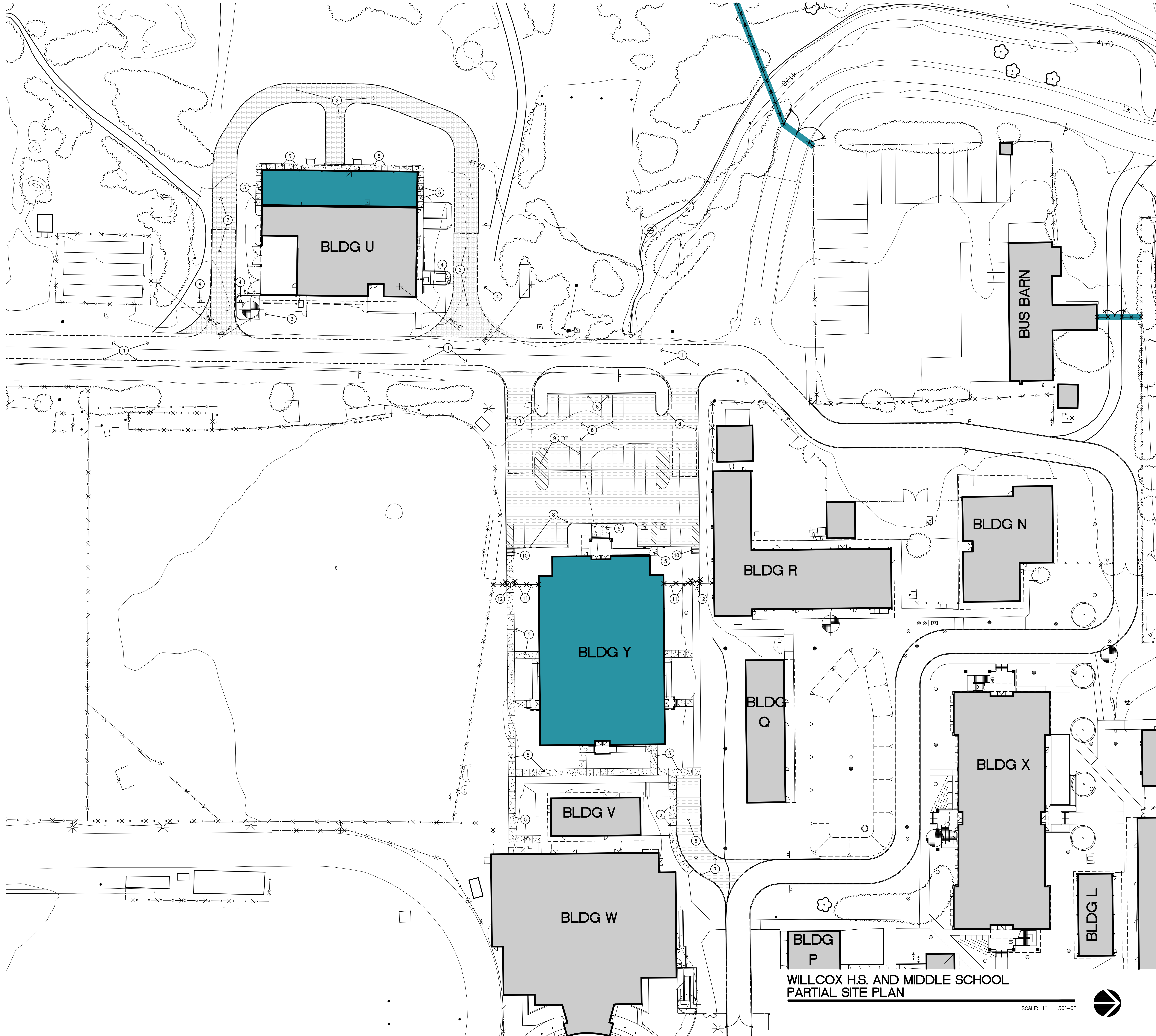
PRELIMINARY
 SET

HDA ARCHITECTS, LLC.
 459 N. Gilbert Road, Suite C-200, GILBERT, AZ 85224
 TEL: (480) 539 8600 FAX: (480) 539 8608
WILLCOX H.S. AND MIDDLE SCHOOL
 OVERALL SITE PLAN



Sheet No.

A110



- NOTES**
- EXISTING ASPHALT PAVING.
 - NEW 6" DEEP GRAVEL AND ABC PAD.
 - EXISTING FIRE HYDRANT.
 - NEW FIRE LANE SIGNAGE. SEE DETAIL 10/A141.
 - NEW CONCRETE SIDEWALK. PROVIDE CONTROL JOINTS AS INDICATED AND EXPANSION JOINTS 20'-0" O.C. AND AT VERTICAL SURFACES. SEE TYPICAL DETAILS.
 - NEW ASPHALT PAVING. SEE CIVIL DRAWINGS.
 - NEW FLUSH 6" CONCRETE CURB. SEE DETAIL.
 - NEW 6" VERTICAL CURB AT ASPHALT PAVING. SEE DETAIL.
 - NEW 4" WHITE PAINTED STRIPE.
 - NEW ACCESSIBLE RAMP. SEE DETAIL.
 - NEW 6'-0" HIGH CHAINLINK FENCING. SEE DETAIL.
 - NEW 6'-0" WIDE X 6'-0" HIGH DOUBLE LEAF CHAINLINK GATE.

GENERAL NOTES



MODERNIZATION OF
WILCOX SCHOOLS
 WILCOX UNIFIED SCHOOL DISTRICT No.18
 WILCOX, AZ 85643

PRELIMINARY
 NOT FOR
 CONSTRUCTION
 OR
 RECORDING

Job No.	1329
Drawn	PDH
Checked	PDH
Date	
Revised	

PRELIMINARY
 SET

HDA ARCHITECTS, LLC.
 459 N. Gilbert Road, Suite C-200, GILBERT, AZ 85234
 TEL: (480) 539 8800 FAX: (480) 539 8608
WILCOX H.S. AND MIDDLE SCHOOL
 PARTIAL SITE PLAN



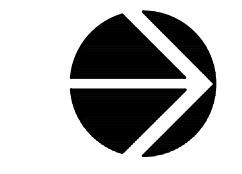
Sheet No.

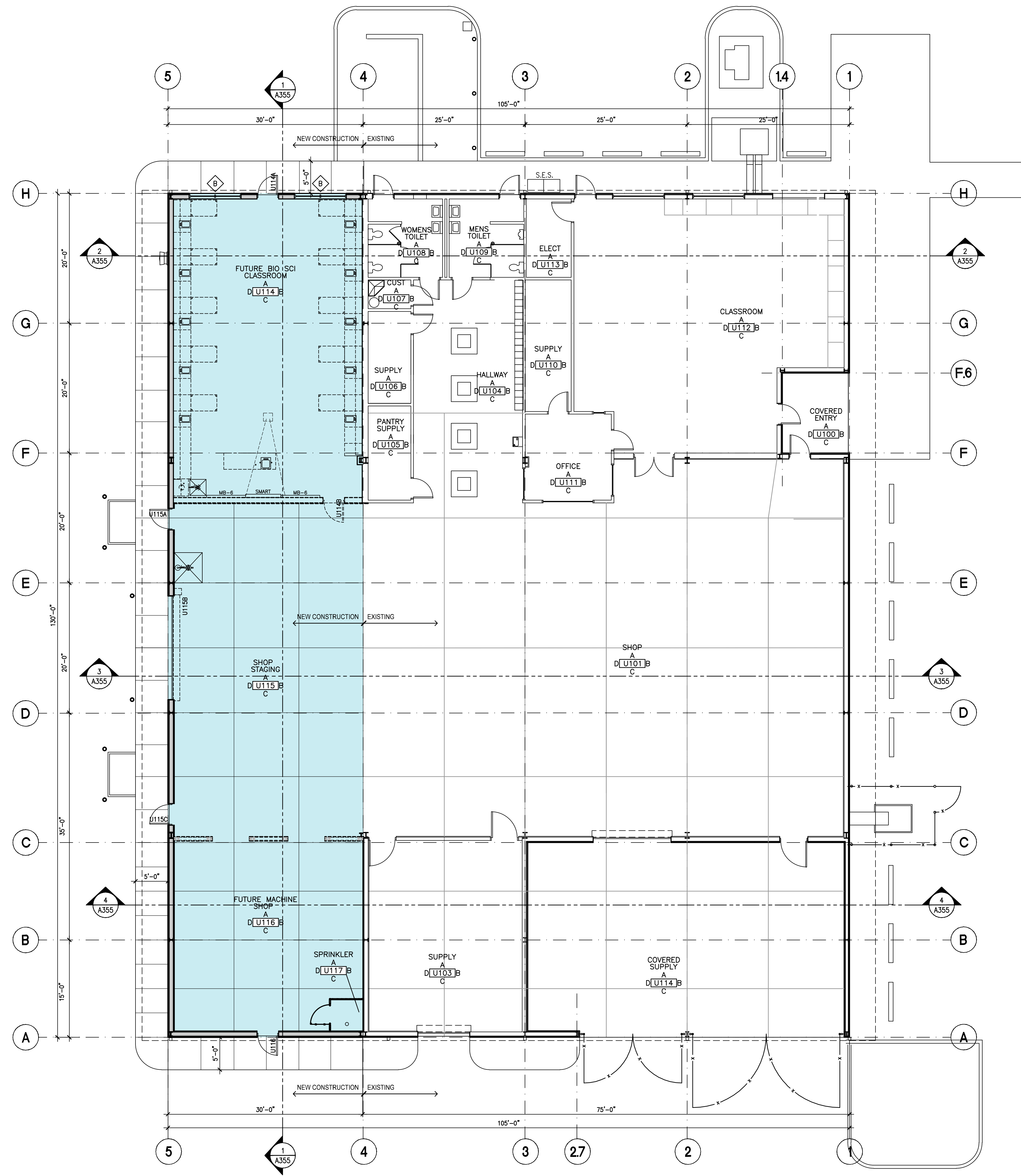
A111

Plot Date: 1-10-14 09:40am Drawing scale: 1:360
 Drawing file: C:\329\1329_Arch\1329-A111
 User: sward 1-10-14 09:50am

**WILCOX H.S. AND MIDDLE SCHOOL
 PARTIAL SITE PLAN**

SCALE: 1" = 30'-0"





**BUILDING 'U'
FLOOR PLAN**

SCALE: 1/8" = 1'-0"



NOTES
1. S



MODERNIZATION OF
WILCOX SCHOOLS
WILCOX UNIFIED SCHOOL DISTRICT No.18
WILCOX, AZ 85643

PRELIMINARY
NOT FOR
CONSTRUCTION
OR
RECORDING

Job No. 1329
Drawn PDH
Checked PDH
Date
Revised

PRELIMINARY
SET

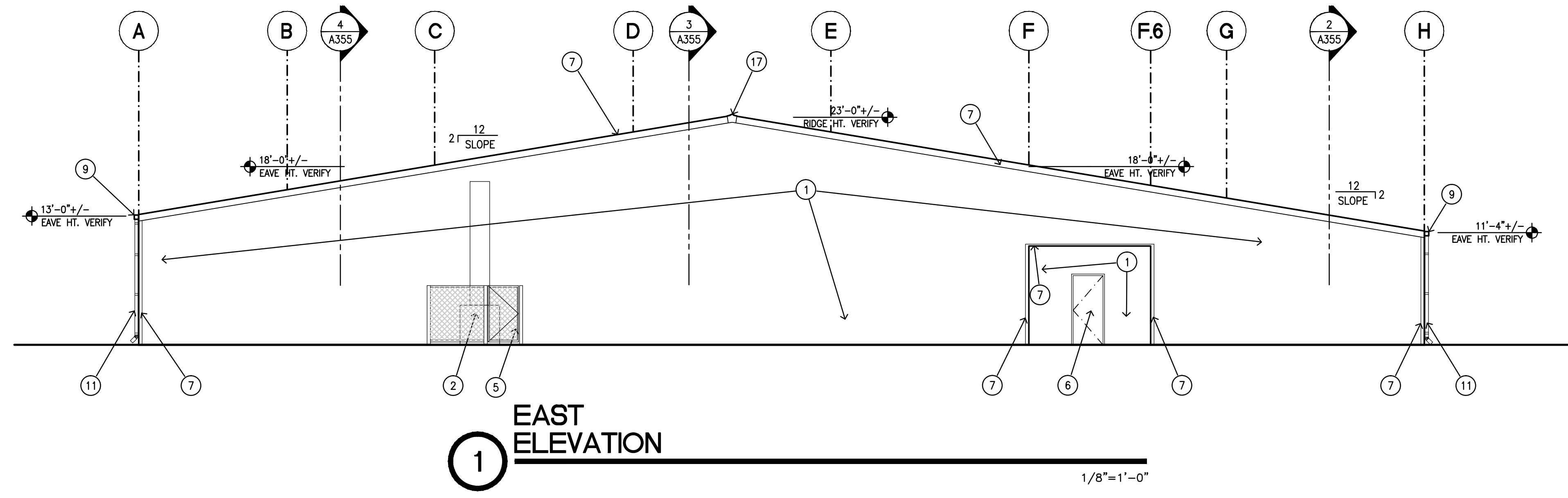
HDA ARCHITECTS, LLC.
459 N. Gilbert Road, Suite C-200, GILBERT, AZ 85234
TEL: (480) 539 8800 FAX: (480) 539 8608



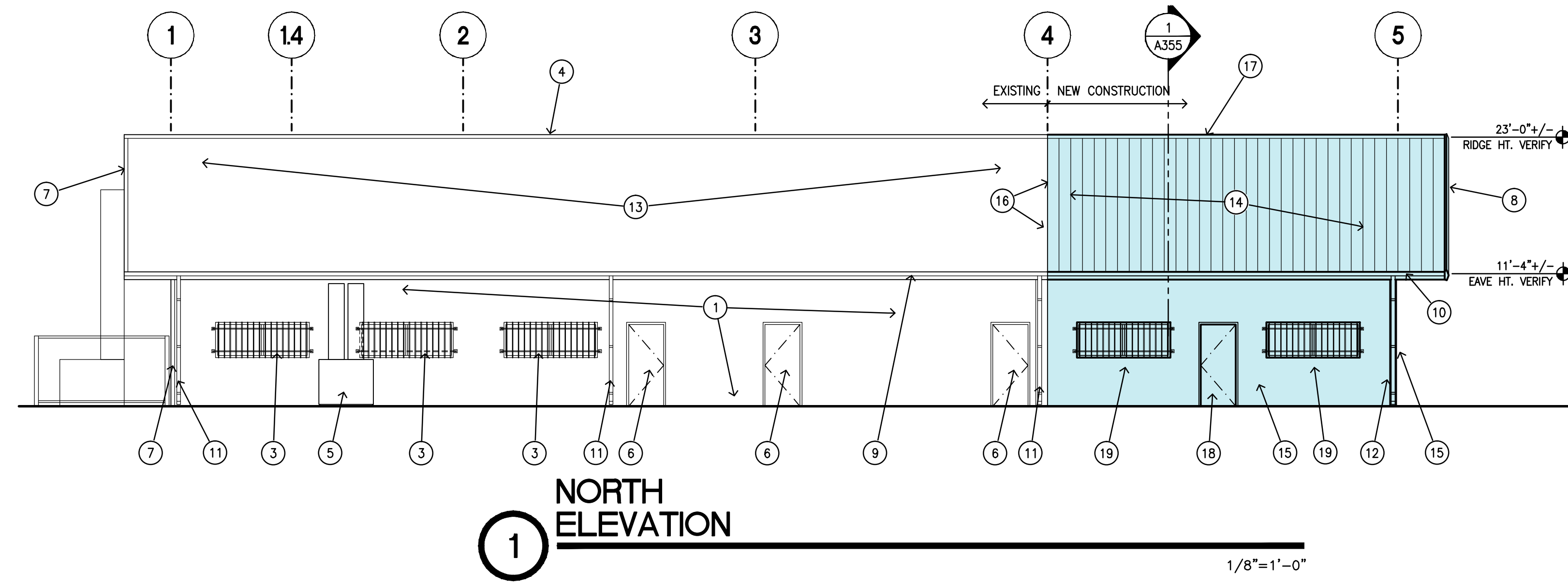
Sheet No.

A252

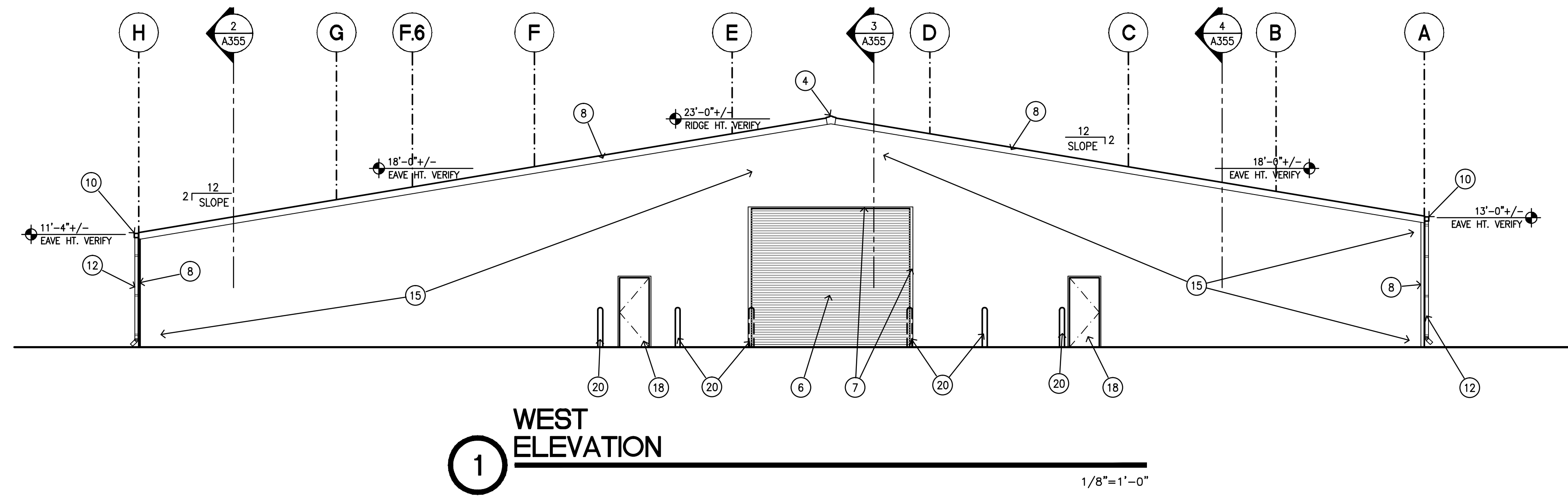
BUILDING 'U'
FLOOR PLAN



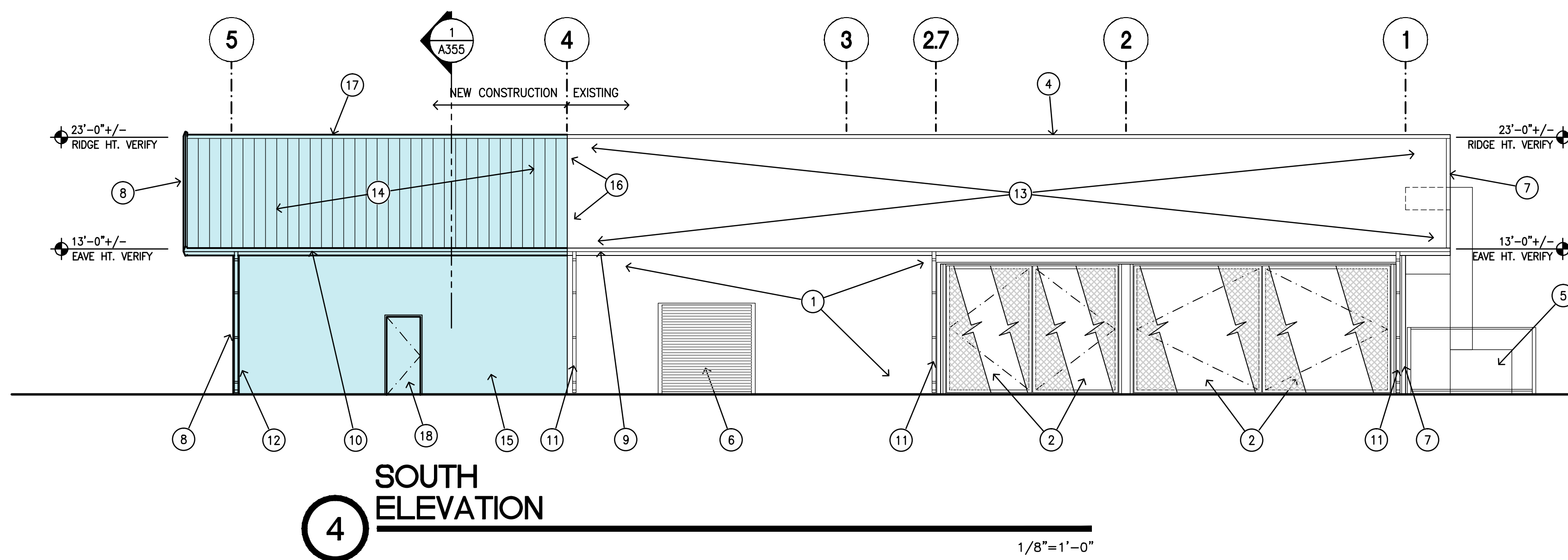
1
EAST ELEVATION
1/8" = 1'-0"



1
NORTH ELEVATION
1/8" = 1'-0"



1
WEST ELEVATION
1/8" = 1'-0"



4
SOUTH ELEVATION
1/8" = 1'-0"

ELEVATION NOTES

1. EXISTING METAL SIDING.
2. EXISTING CHAIN LINK GATES AND OR FENCE TO REMAIN.
3. EXISTING WINDOW WITH EXISTING SECURITY GRILL.
4. EXISTING RIDGE CAP.
5. EXISTING MECHANICAL EQUIPMENT TO REMAIN.
6. EXISTING DOOR.
7. EXISTING METAL TRIM FASCIA.
8. NEW METAL TRIM FASCIA. COLOR AND PROFILE TO MATCH EXISTING.
9. EXISTING GUTTER.
10. NEW GUTTER MATCH EXISTING.
11. EXISTING DOWNSPOUT.
12. NEW DOWNSPOUT.
13. EXISTING METAL ROOF PANELS.
14. NEW METAL ROOF PANELS, COLOR AND PROFILE TO MATCH EXISTING.
15. NEW METAL SIDING TO MATCH EXISTING.
16. 1" ROOF EXPANSION JOINT.
17. NEW RIDGE CAP, COLOR AND PROFILE TO MATCH EXISTING.
18. NEW DOOR. SEE DOOR SCHEDULE.
19. NEW WINDOW. SEE WINDOW TYPES.
20. NEW PIPE BOLLARD. SEE FLOOR PLAN.

GENERAL NOTES:

A. CONTRACTOR SHALL PROTECT THE EXISTING BUILDING FROM DAMAGE DURING DEMOLITION AND CONSTRUCTION. IF DAMAGE OCCURS (ROOF PANELS, WALL PANELS, SOFFIT PANELS, DOORS, TRIM, ETC) THE CONTRACTOR MUST REPAIR OR REPLACE THE DAMAGE.



MODERNIZATION OF
WILLCOX SCHOOLS
 WILLCOX UNIFIED SCHOOL DISTRICT No.19
 WILLCOX, AZ 85643



Job No.	1329
Drawn	PDH
Checked	PDH
Date	
Revised	

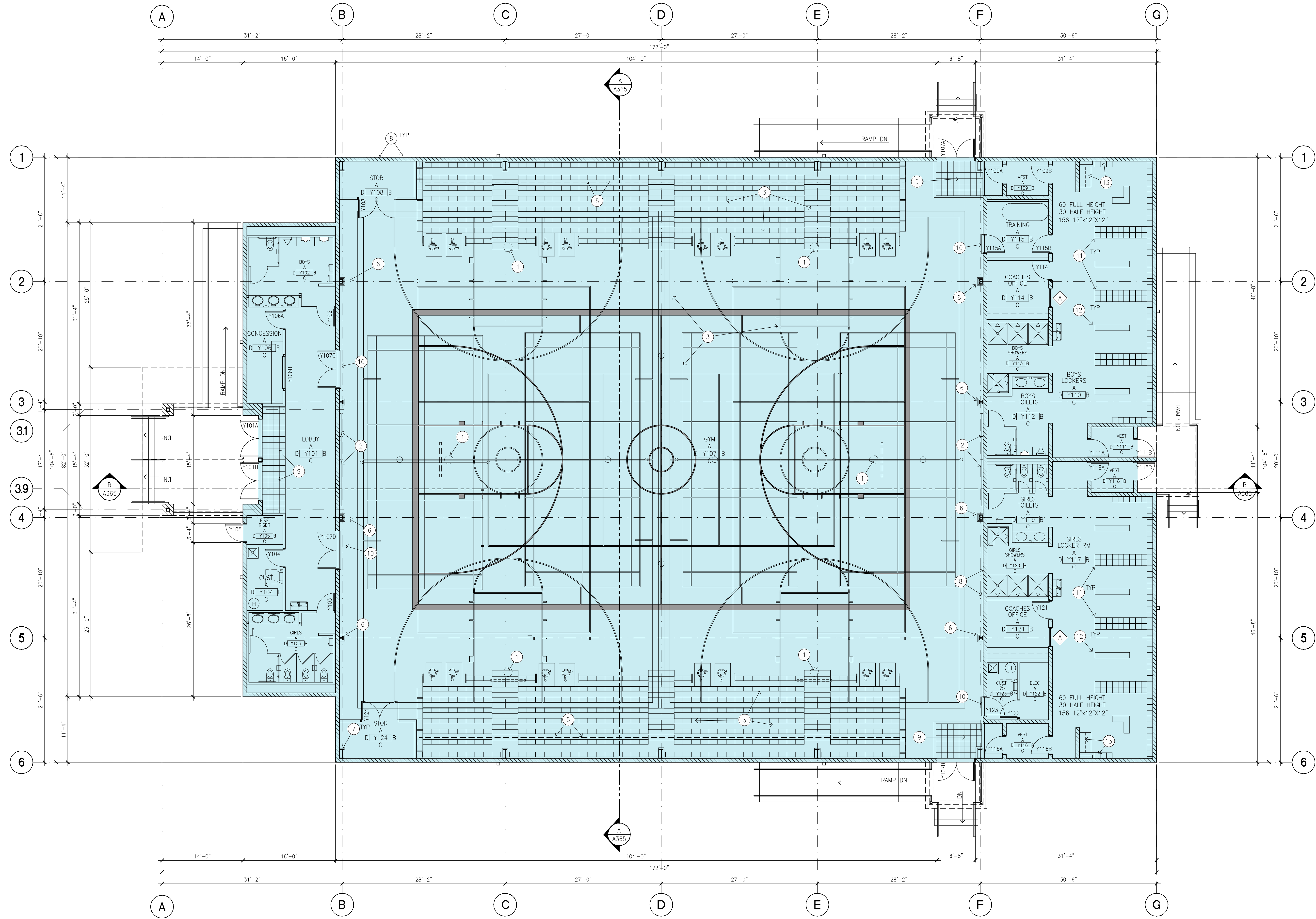
PRELIMINARY SET

HDA ARCHITECTS, LLC.
 459 N. Gilbert Road, Suite C-200, GILBERT, AZ 85234
 TEL: (480) 539 8800 FAX: (480) 539 8608
BUILDING 'U'
BUILDING ELEVATIONS & SECTIONS



Sheet No.
A350

Plot Date: 1-10-14 10:02am Drawing scale: 1/8" By: paulh
 Drawing file: C:\1329\1329_Arch\1329-A350
 Last Saved: 1-10-14 08:11am



**BUILDING 'Y'
FLOOR PLAN**

SCALE: 1/8" = 1'-0"

- NOTES**
1. FORWARD FOLDING BASKETBALL BACKSTOP.
 2. WALL MATS.
 3. COURT STRIPING. SEE SHEET _____
 4. TELESCOPING BLEACHERS. SEE SHEET _____
 5. DASHED LINE INDICATES TELESCOPING BLEACHERS IN CLOSED POSITION.
 6. PROTECTIVE WALL MAT ON STEEL COLUMN.
 7. STEEL COLUMN WITH RAISED CONCRETE BASE.
 8. 8' OAK WALL.
 9. RECESSED FLOOR MAT. SEE DETAIL _____ TYPICAL DETAILS.
 10. STAINLESS STEEL WOOD FLOOR TRANSITION. SEE TYPICAL DETAILS.
 11. 6'-0" HIGH METAL LOCKER ON 4" CONCRETE BASE. SEE DETAIL _____
 12. WOOD ATHLETIC BENCH. SEE DETAIL _____
 13. ACCESSIBLE METAL LOCKER WITH BENCH. SEE DETAIL _____

GENERAL NOTES



MODERNIZATION OF
WILCOX SCHOOLS
WILCOX UNIFIED SCHOOL DISTRICT No.13
WILCOX, AZ 85643

PRELIMINARY
NOT FOR
CONSTRUCTION
OR
RECORDING

Job No. 1328
Drawn PDH
Checked PDH
Date
Revised

**PRELIMINARY
SET**

HDA ARCHITECTS, LLC.
459 N. Gilbert Road, Suite C-200, GILBERT, AZ 85224
TEL: (480) 539 8800 FAX: (480) 539 8608

**BUILDING 'Y'
FLOOR PLAN**

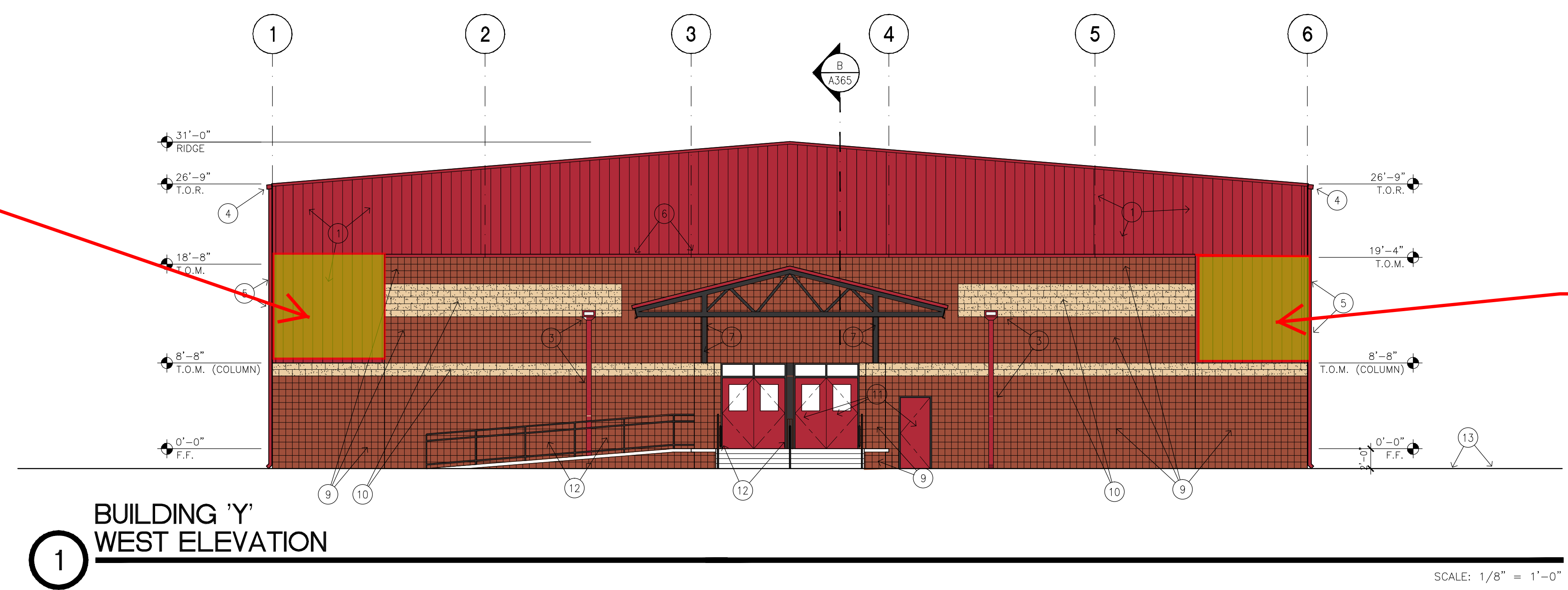


Sheet No.
A261

- NOTES**
1. PRE-FINISHED METAL SIDING.
 2. PRE-FINISHED STANDING SEAM METAL ROOFING.
 3. PRE-FINISHED METAL SCUPPER / DOWNSPOUT.
 4. PRE-FINISHED METAL GUTTER.
 5. PRE-FINISHED METAL DOWNSPOUT.
 6. PRE-FINISHED METAL CAP FLASHING.
 7. METAL FRAMING - PAINTED.
 8. METAL TRUSS - PAINTED.
 9. 8x8x16 SINGLE SCORE CMU - PAINTED.
 10. 8x8x16 BROKEN FACE CMU - PAINTED.
 11. HOLLOW METAL DOORS & FRAMED - PAINTED.
 12. HOLLOW METAL RAILINGS - PAINTED.
 13. FINISHED GRADE.

Extend
Masonry to
19'-4"

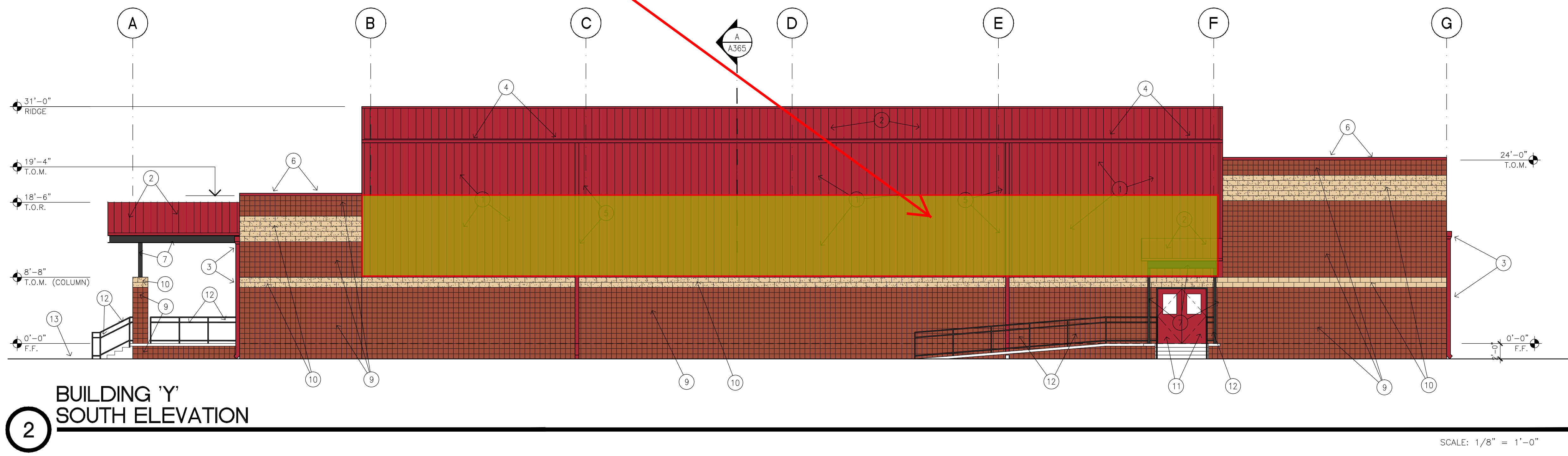
Extend
Masonry to
19'-4"



1
BUILDING 'Y'
WEST ELEVATION

SCALE: 1/8" = 1'-0"

Extend
Masonry to
19'-4"



2
BUILDING 'Y'
SOUTH ELEVATION

SCALE: 1/8" = 1'-0"

GENERAL NOTES

A.



MODERNIZATION OF
WILLCOX SCHOOLS
WILLCOX UNIFIED SCHOOL DISTRICT No.13
WILLCOX, AZ 85643

PRELIMINARY
NOT FOR
CONSTRUCTION
OR
RECORDING

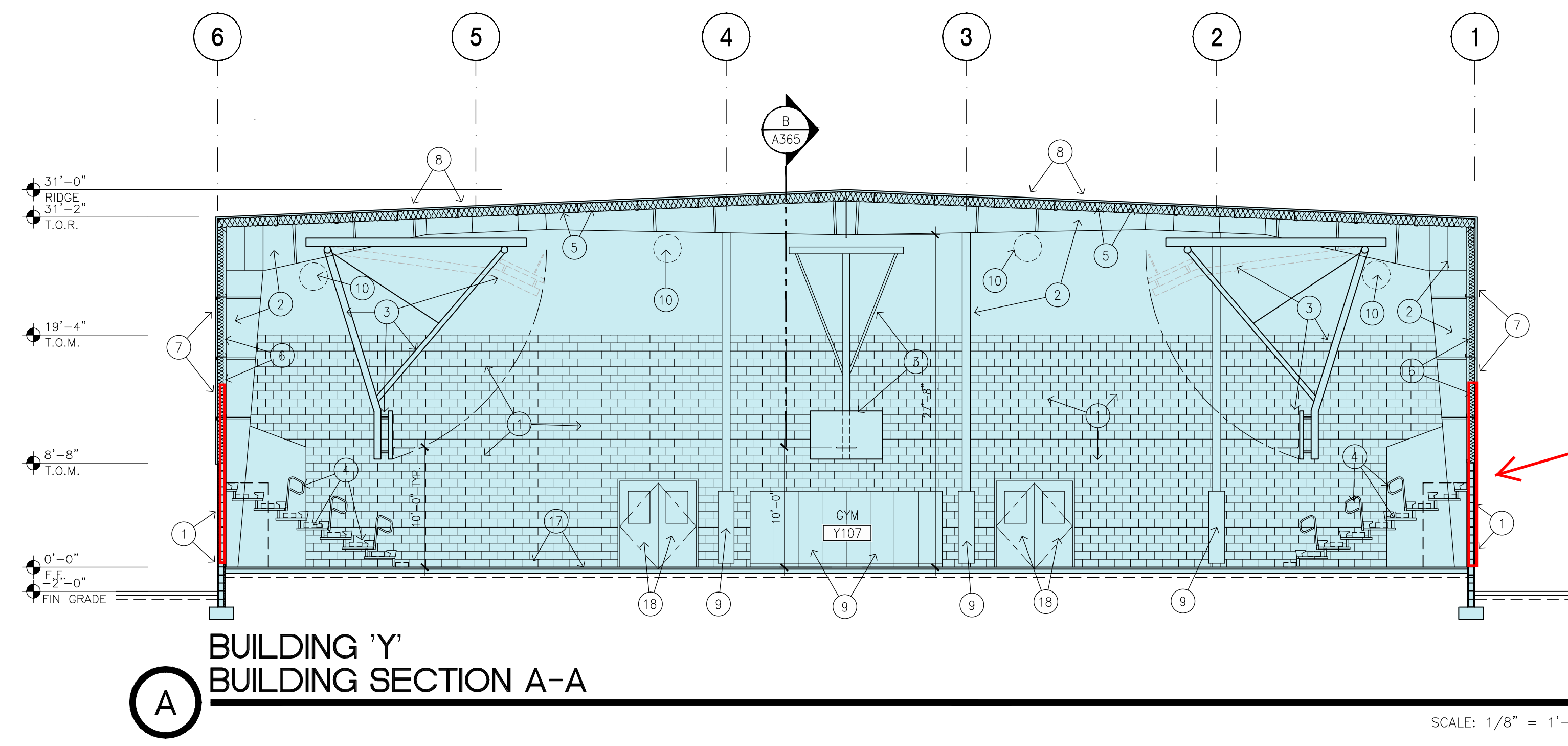
Job No.	1329
Drawn	PDH
Checked	PDH
Date	
Revised	

PRELIMINARY SET

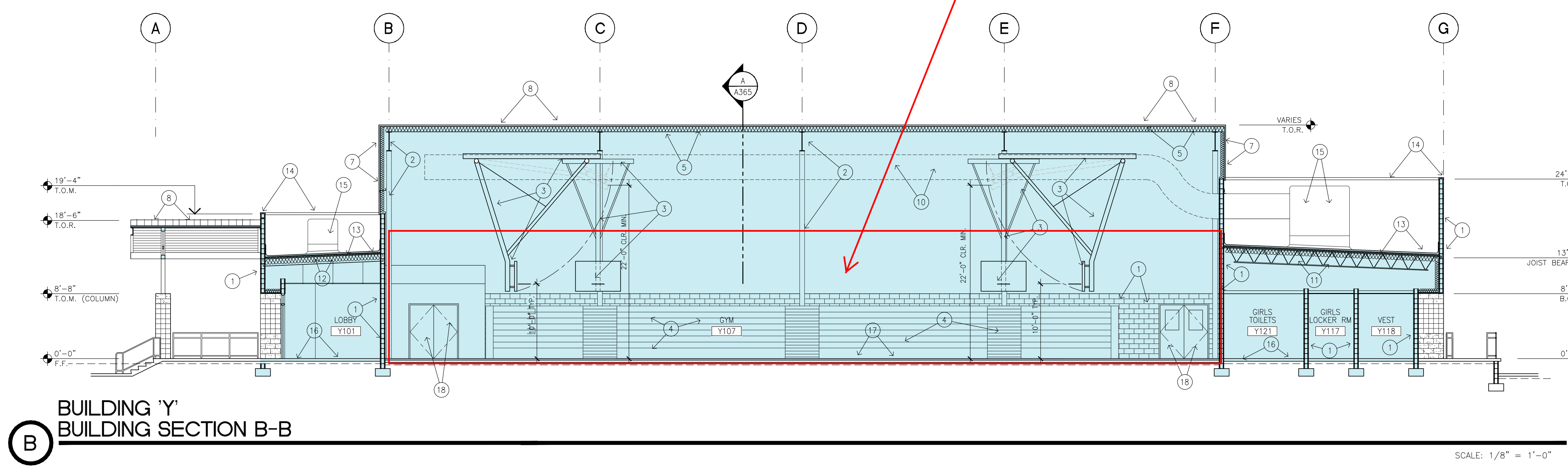
HDA ARCHITECTS, LLC.
459 N. Gilbert Road, Suite C-200, GILBERT, AZ 85234
TEL: (480) 539 8800 FAX: (480) 539 8608



Sheet No.
A361



Extend masonry to 19'-4"



- NOTES**
1. 8x8x16 CMU.
 2. METAL BUILDING FRAME.
 3. FORWARD FOLDING BASKETBALL BACKSTOP.
 4. TELESCOPING BLEACHERS.
 5. R-30 BATT INSULATION WITH 'BALL GUARD' COVER.
 6. R-19 BATT INSULATION WITH 'BALL GUARD' COVER.
 7. PRE-FINISHED METAL SIDING.
 8. PRE-FINISHED STANDING SEAM METAL ROOFING.
 9. WALL MAT.
 10. 'DUCT SOCK' MECHANICAL DUCTWORK.
 11. METAL BAR JOIST FRAMING.
 12. STEEL BEAM FRAMING.
 13. SPRAY FOAM ROOFING OVER GY. BD. OVER METAL DECKING INSULATED WITH R-30 BATT INSULATION.
 14. PRE-FINISHED METAL CAP FLASHING.
 15. ROOF MOUNTED MECHANICAL EQUIPMENT.
 16. CONCRETE SLAB ON ABC.
 17. RESILIENT WOOD FLOORING OVER CONCRETE SLAB ON ABC.
 18. HOLLOW METAL DOORS & FRAMES.

GENERAL NOTES



MODERNIZATION OF
WILCOX SCHOOLS
 WILCOX UNIFIED SCHOOL DISTRICT No.13
 WILCOX, AZ 85643

PRELIMINARY
 NOT FOR
 CONSTRUCTION
 OR
 RECORDING

Job No. 1328
 Drawn PDH
 Checked PDH
 Date
 Revised

PRELIMINARY
 SET

HDA ARCHITECTS, LLC.
 459 N. Gilbert Road, Suite C-200, GILBERT, AZ 85234
 TEL: (480) 539 8800 FAX: (480) 539 8608

BUILDING 'Y'
BUILDING SECTIONS



Sheet No.
A365

Plot Date: 1-10-14 11:07am Drawing scale: 1/8" = 1'-0"
 User: pdh Location: \\1328-4363
 Last Saved: 1-10-14 11:06am



Plot Date: 1-10-14 09:52am Drawing scale: 1:1 By: south
 File Path: C:\Users\jwaller\Documents\2014-01-05\1259 Bldg Y Images
 Last Saved: 1-09-14 10:24am



MODERNIZATION OF
WILCOX SCHOOLS
 WILCOX UNIFIED SCHOOL DISTRICT No.13
 WILCOX, AZ 85643

PRELIMINARY
 NOT FOR
 CONSTRUCTION
 OR
 RECORDING

Job No. 1329
 Drawn PDH
 Checked PDH
 Date
 Revised

PRELIMINARY
 SET

HDA ARCHITECTS, LLC.
 459 N. Gilbert Road, Suite C-200, GILBERT, AZ 85234
 TEL: (480) 539 8800 FAX: (480) 539 8608
 WILCOX HIGH SCHOOL - BLDG Y
 PERSPECTIVES



Sheet No.